

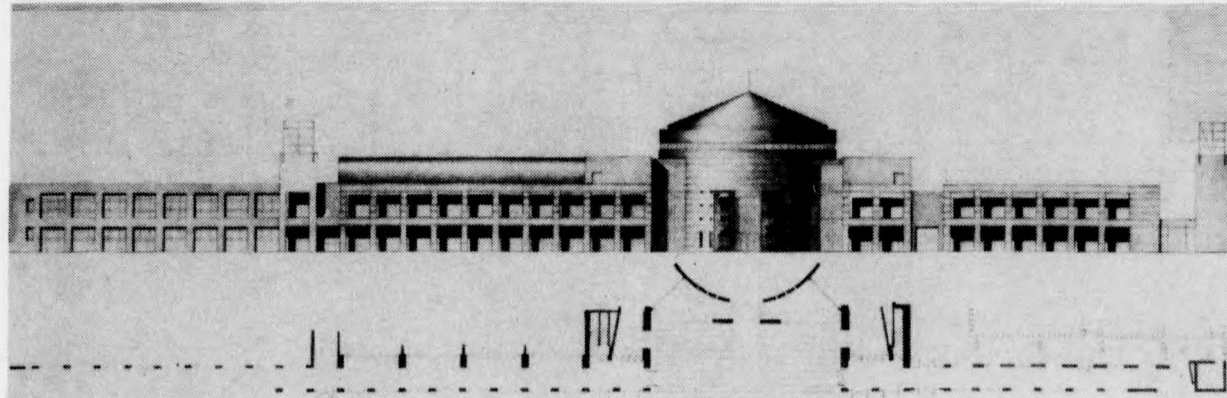
York Builds

WE CARE ABOUT YOUR SAFETY!

Please observe all signs, walk around all barriers, and use only those routes which have been designated for pedestrian/vehicular traffic.

January 1990

Produced by the Office of the Vice-President (Finance & Administration) in collaboration with the Construction Division, Physical Resources Group.



Construction of the New Academic Building (NAB) and Entry Pavilion will begin in early February. It will be a two- and three-story steel and concrete structure, situated directly in front of the Ross Building, and south of the Behavioral Sciences Building. The NAB and Entry Pavilion will provide an additional 130,000 gross square feet of space for instructional facilities, and faculty and staff offices for selected academic departments. The building is expected to be completed and ready for occupancy during the Fall of 1991.

New Academic Building and Entry Pavilion Construction to start Feb. 1st

Impact of NAB Construction on Campus Life

Construction of the NAB will result in disruption of both pedestrian and vehicular traffic flows, parking, etc., around the Ross Building and the Behavioural Science Building (BSB). Alternate arrangements are being made and clear directional signage is being erected at appropriate locations. Members of the community should note the following changes:

Ross Loading Dock & Adjacent Doors

Effective February 1, 1990 the Ross Loading Dock, adjacent doors, and service roadway will be closed to all vehicular/pedestrian traffic, except for postal delivery vehicles.

A temporary hoarding line will permit turn-around access to the Ross dock for postal delivery vehicles only, until approximately mid-March 1990 when the York Central Mailroom will be relocated to the basement of Curtis Lecture Halls.

All other delivery/service vehicles destined for Ross/Central Square will be rerouted to the Scott Loading Dock which has recently been modified to accommodate the anticipated increase in traffic. The Scott Dock will be a supervised operation. A freight elevator has been installed to assist the movement of goods between the Ross/Central Square complex.

The Ross Dock will shut down completely after the mailroom has been relocated. At that time the hoarding line for the NAB will shift right over to the south wall of the Behavioural Sciences Building (BSB) until construction of the project is complete.

Pedestrian Routing In and Out of Ross

The southeast doors of the Ross Building are expected to remain in operation throughout most of the duration of the project. A temporary pathway connecting to the new Fire Access Route will permit access around the hoarding line. The terrain in this area will however make this pathway unsuitable for wheelchair users. Persons in wheelchairs are advised to use the Central Square doors until such time as the pathway can be levelled for easy access.

Access to Ross through the northeast doors will not be affected during the entire construction period. A passageway along the south face of BSB will be maintained for pedestrian traffic except for a short period during late summer 1990 when construction of the BSB colonnade gets underway. At that time alternate access will be in place at the north sides of BSB and the new Student Centre.

The existing footpaths along the west of Fine Arts, and extending north from the 106 bus stop, are expected to remain in use throughout the project. Lighting will be installed around the perimeter of the hoarding to ensure safe pedestrian travel at night.

TTC Routes

The hoarding line for the NAB project will not obstruct the bus routing in front of Ross, and the 106 and 106X bus stops will stay where they are.

BSB Traffic Circle

All parking at the BSB traffic circle will be prohibited, and access through the area will be restricted to transit vehicles for handicapped persons and service/delivery vehicles destined for BSB.

Parking

All parking directly in front of the Ross Building will be eliminated. Alternate parking can be found in other lots on campus as follows:

- **Service parking:** DD and HH Lots
- **Short-term parking:** At meters in Lots DD, JJ, EE, HH and along Moon Road.
- **Short-term daily fees parking:** AA, FF and LL Lots
- **Handicapped and Medical parking:** KK Lot

Passenger Pick-Up and Drop-Off

A portion of the east face of the hoarding line near the 106 bus stop will be covered to provide weather protection for passengers waiting for rides. Space for waiting vehicles will be limited however, and passengers are urged to make arrangements for alternative pick-up points on campus.

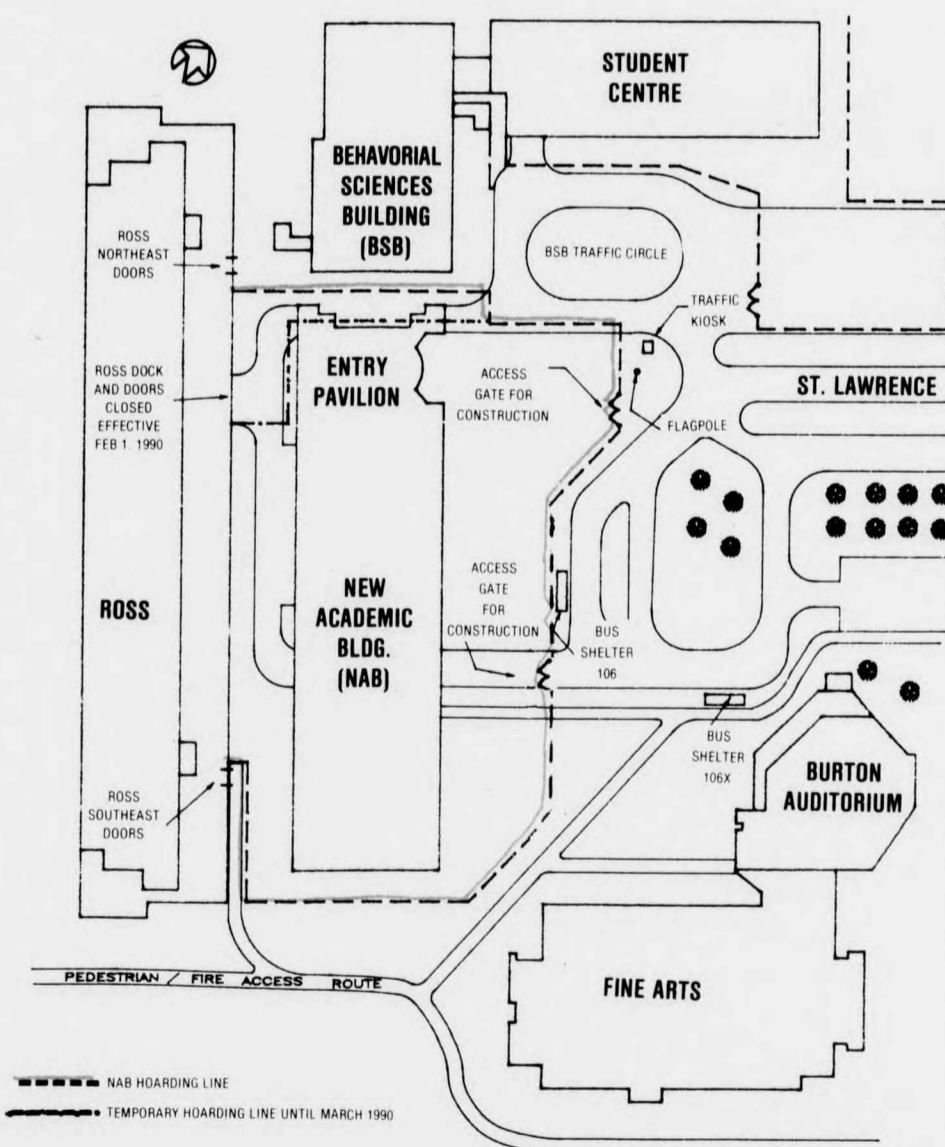
Construction Traffic

There will be two gates for construction vehicles to gain access to and from the NAB site; one near the flagpole, and one to the south of the 106 bus stop. Chain link safety fences will be used at these gates rather than hoarding, to ensure optimum visibility to pedestrians and other vehicular traffic.

Traffic Control

A staffed kiosk will remain situated in the area in order to monitor and regulate traffic conditions.

Members of the community are urged to call the Construction Hotline Number at **736-5445**, with concerns, questions and suggestions about the construction activity on campus.



Suggestions, complaints, requests for information etc., about the Campus Building Programme should be sent to the Executive Construction Coordinating Committee, c/o Billie Mullick, Office of the Vice-President (Finance and Administration), Room S958A Ross Building, or Debbie Kee, Communications Officer for Construction, Room 112, Construction Headquarters Building.