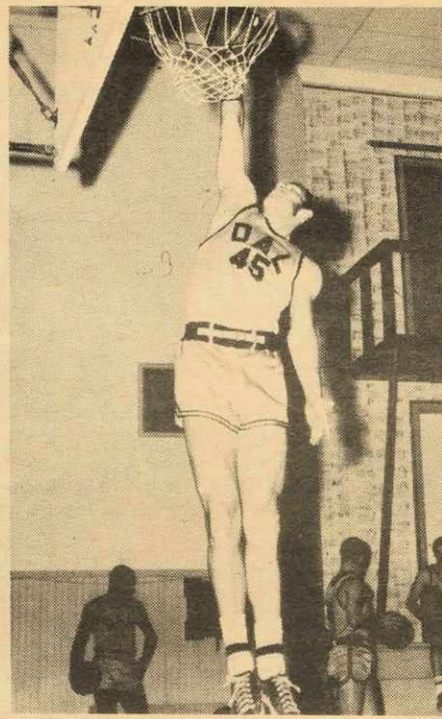
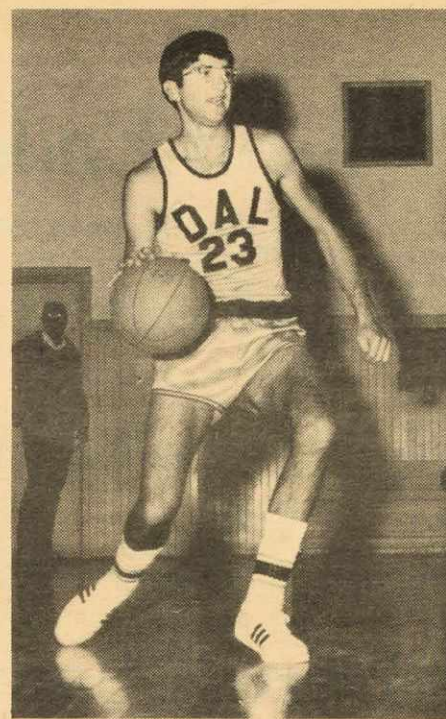




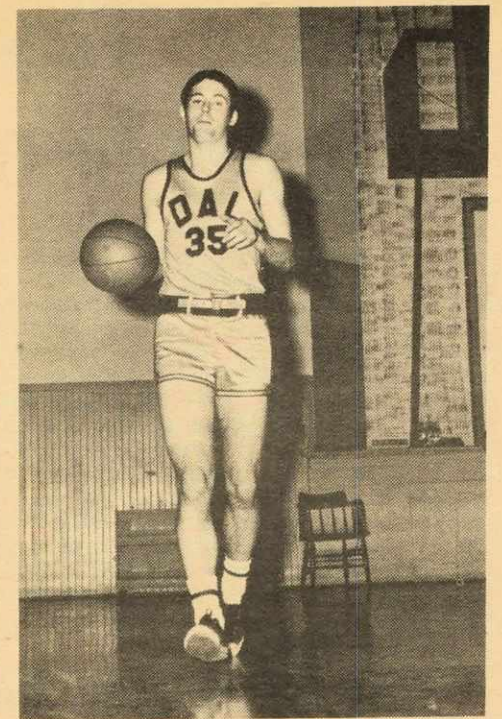
George Hughes



Bruce Bourassa



Irv Cohen



Brian Peters



Mickey Ryan

THE 1968 BASKETBALL TIGERS

George Hughes - 6' - guard. George is the captain of this year's edition of the Tigers. He is starting his fourth year of play with the Tigers. He has a fine outside shot and plays tough defense.

Bruce Bourassa - 6' 7" - center. In his third year with the Tigers Bruce has continued to improve and this year ranks with the best big men in the League. A good rebounder he could be high in that category for the Tigers.

Irv Cohen - 6' 2" - forward. A second year man Irv is a fine outside shooter as well as tenacious on defensive where his quick hands are a great asset.

Brian Peters - 6' 5" - guard. At 6' 5" one of the biggest guards in the League. A fine outside shooter who handles the ball extremely well for a big man.

John Cassidy - 6' 5" - center. A very tenacious and determined rebounder who led the team in that department last year. An explosive player his desire should be an asset to the team. He can also score from inside and out.

Wayne Talbot - 6' 1" - forward. A starter for last year's JV team he has been one of the most pleasant surprises this year. He plays good defense and handles the ball very well.

Mickey Ryan - 6' 4" - center. A first year law student who has previous experience with SMU and the Schooners. A good outside shot, hustle, and strong defense make him a valuable asset.

Gary Folker - 6' 4" - forward. A freshman in Commerce Gary played last year at Horton where his team won the Nova Scotia Headmasters. Very tough inside and out.

Steve Bezanson - 6' 3" - guard. A freshman from West Kings. He had tremendous court sense on both offense and defense. A good ball handler.

Bill Graves - 6' 5" - center. A freshman from QEH where as a starting center in Grade 10 the team captured the provincial title. An excellent athlete with strength and quickness, he needs experience.

Joe Murphy - 5' 9" - guard. A freshman from QEH. A great ball handler and dribbler who goes equally well left and right. Very determined and a hard worker.

Drew Bethune - 6' 4" - center. A sophomore who is much improved over last year. Quick and determined on defense he has developed poise and an all around game.

In addition to the players pictured there are three who coach Yarr had much difficulty in cutting from the Varsity and who could move up as the season moves along. They are Tom Barry a 6' 3" guard from Saint John in his freshman year, Howard Snow a 6' 8" center in her second year, and Jeremy Gay a 6' 4" center in his second year.

The team opens its season on Nov. 15 against the Grads and then takes on Mount Allison in the first League Game on Nov. 22. On the 23th and 24th they take part in the annual St. Mary's tournament along with St. FX and St. Francis of Maine.



Gary Folker



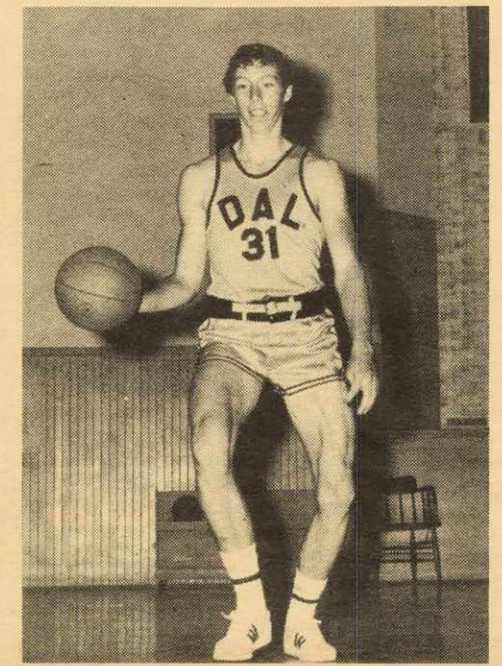
Steve Bezanson



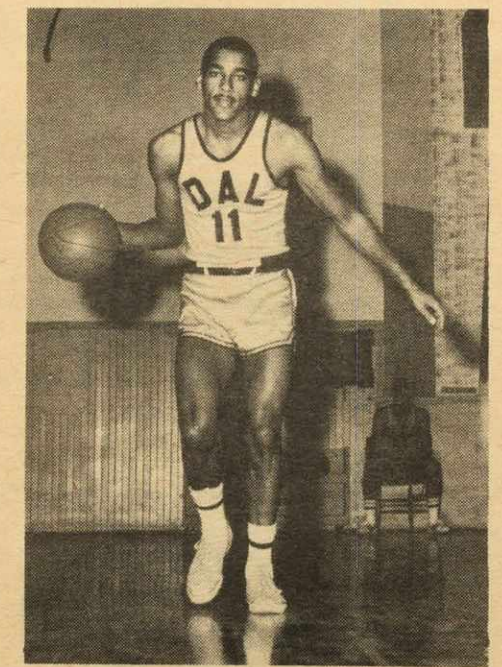
Bill Graves



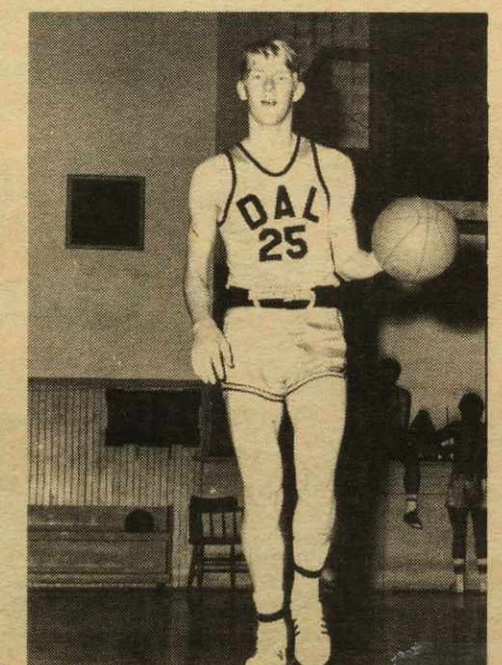
Joe Murphy



John Cassidy



Wayne Talbot



Drew Bethune