

The Robert Simpson Company, Limited

Latest Fall Styles in Christy's English Hats

Stiff Hats, in nearly all proportions of brim and crown, as worn for season 1912 and 1913. Special price 2.00

Soft Hats for Fall and Winter, in all the popular shapes, in rough, velour and mixed finishes; also in stitched and corduroy finish; complete range of latest colors. Splendid value at 1.50

Reductions on Fine Wilton Rugs

Actual Savings of From 15 Per Cent. to 25 Per Cent. on Each Rug.

The new Fall deliveries are crowding in on us, and in order to make room and to clear stocks of single rugs or odd sizes, we are making sweeping reductions on them. Many are just as good in design and color as the new ones coming in, but we have to keep moving on, and so offer this chance to buy standard quality rugs at, in many cases, actual cost prices.

- 9.0x9.0. Regularly \$25.00 and \$31.00. Special Tuesday 22.75
- 9.0x10.6. Regularly \$30.00 and \$34.75. Special Tuesday 24.75
- 9.0x12.0. Regularly \$33.00 and \$40.00. Special Tuesday 29.75
- 11.3x12.0. Regularly \$45.75 and \$52.00. Special Tuesday 35.00
- 11.3x13.6. Regularly \$52.00 and \$59.50. Special Tuesday 39.75

About Twenty Only English Seamless Velvet Rugs are marked down in the same way; these are hard-wearing handsome rugs at a very small cost, and woven entirely in one piece:

- 9.0x 10.6. Special Tuesday 15.95
- 9.0x12.0. Special Tuesday 18.95
- 10.6x12.0. Special Tuesday 21.95

An Eight o'Clock Rush for remnants of Heavy Printed Linoleums at Half Price. New designs in tile, block, carpet and matting, quantities up to eight square yards. Cannot promise to fill phone or mail orders. Special Tuesday at 8 o'clock, per square yard 23

Demonstrations of Mexican Art Stencilling

FREE LESSONS in our new system of stencilling and cut-out work, on linen, scrim, burlap, silks, satins, etc. The busy woman's art work. No special talent required. See demonstration today.

Cutlery Specials

Three-Piece Carving Sets, stag handles, nickel-mounted. Sheffield steel blades, plush lined leatherette case, with hinged cover. One of our best selling lines. Tuesday for 3.15

Barbers' Scissors, Chromo Brand, 7 1/2 inches long, full nickelled. Tuesday for 25

Union Ladies' Scissors, 5 inches long, sharp points. Tuesday for 15

Sheffield Steel, Crown Manufacture Table Knives, celluloid handles, secure handles. Special value:

- Table size, Tuesday, per half dozen 1.10
- Dessert size, Tuesday, per half dozen90
- Butchers' Knives, Sheffield steel, 6-inch blades, redwood handles, securely fixed. A handy kitchen size. Tuesday for 25
- Serving Trays—We have a special line in these, made up of decorated tile work and nickel-plated ware, as follows:
 - Square shape, deep rim, side handles. Tuesday for 1.35
 - Oval shape, deep rim, without handles. Tuesday for 1.25
 - Round shape, deep rim, without handles. Tuesday for69
- Tumbler Coasters, assorted fruit and floral tile patterns, with nickel mountings. Tuesday for 15
- Tea Pot Stands, assorted designs, with nickel rim and ball feet. Tuesday for 35
- Cake or Fruit Baskets, deep patterns, combination decorated tile and nickel-plated ware, with folding handle. Tuesday for 65

New Fall Suits For Men

The demand for Tweed Suits this fall is increasing, and we have a stock of great variety and many special values. An English tweed in a plain pattern, gray and brown mixed. Cut in one of the leading styles for fall. A smart single-breasted, three-button style, with good linings and beautifully tailored. Price 10.00

A Grey Bannockburn Tweed, a hard wearing, good looking suit; single-breasted, three-button style, strong, good wearing linings and excellent workmanship. Price 13.50

\$15.00 Suits—This tweed is one of those heather mixed brown tweeds, cut single-breasted style and well tailored. Price 15.00

Some Excellent Values in Fine Brown Tweeds, in striped effects; cut best single-breasted styles, and excellently tailored. 18.50

One of the Finest Tweed Suits is of English gray tweed, showing a subdued pattern; correct single-breasted, three-button style; excellent workmanship. Price 24.00

BOYS' TWO-PIECE SUITS.

Made from Winter weight Scotch tweed, with double-breast coat and bloomer pants,

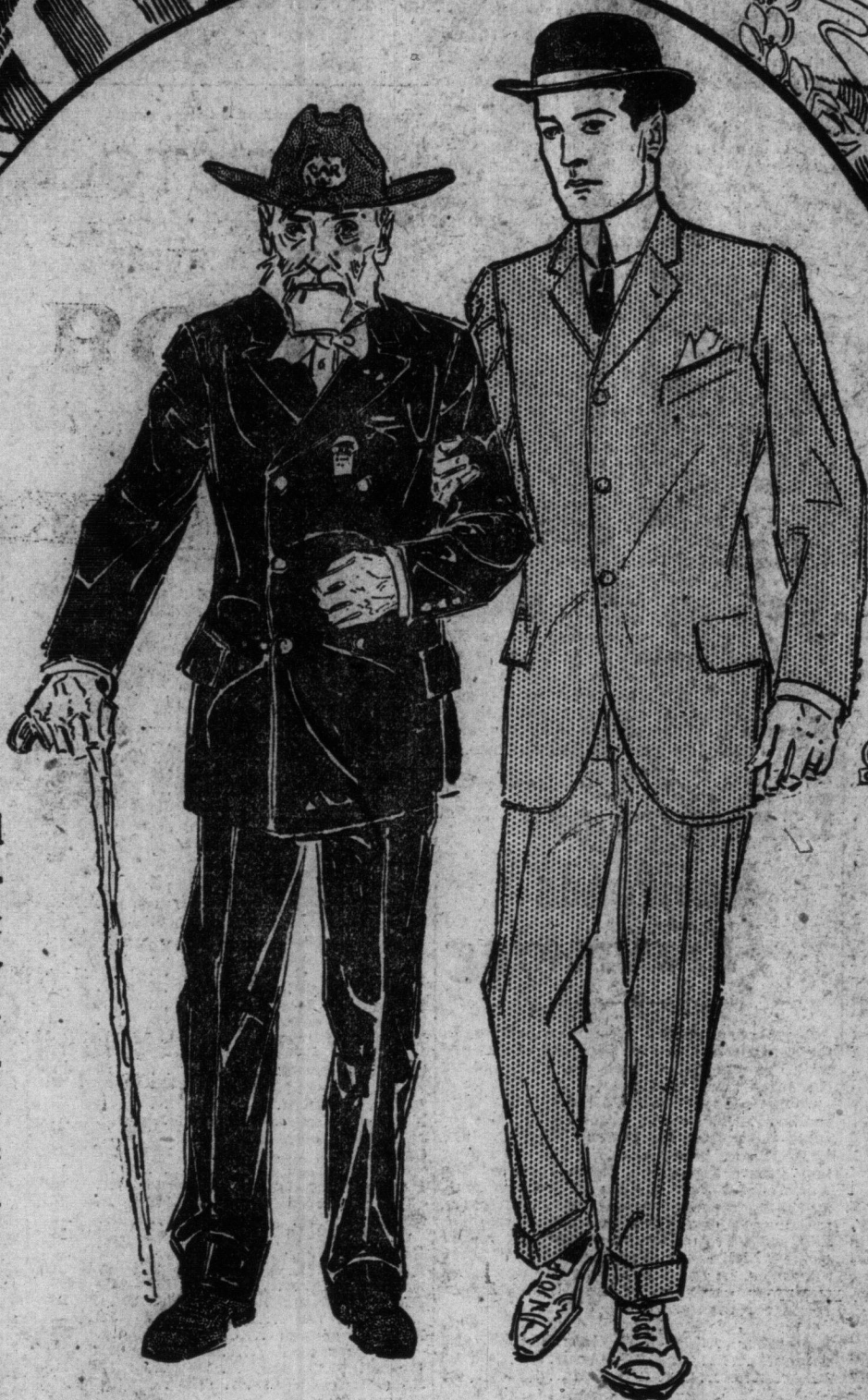
twill linings and well-tailored; tan-gray shade, rough finish, very fashionable for this season's wear. Sizes 26 to 34. Tuesday 6.50

BOYS' PRUSSIAN OVERCOATS.

Brown diagonal tweed cloth, with button-close-to-the-neck Prussian collar and full box back. Tuesday, sizes 4 to 8 years 4.50

BOYS' RUSSIAN SUITS.

High-Grade Worsted Russian Suits, tan, check pattern, single-breast sway front, to button close to neck; bloomer pants; tailored by high-grade workmen. Tuesday, 2 1/2 to 7 years, at 6.00



Timely Pricing of Men's Furnishings

Several Hundred Odd Garments of Men's Underwear, in different weights, for Fall and Winter wear. In the lot are Scotch wools, English natural wool, and "Pen-Angle" Brand merino. Not all sizes in any one line, but in the lot there are sizes 34 to 44. Regularly 75c and \$1.00. To clear Tuesday, a garment 49

300 Men's English Flannelette Night Robes, long and wide, neat stripes of pink or blue; a good medium weight material; sizes 16 to 19 only. Regularly 75c. Tuesday 49

250 Suits of Men's Heavyweight Pyjamas, stripes of pink, blue, helio or gray; washable silk frogs; the jacket is made double-breasted style, with a military collar; will wear and wash well; sizes 34 to 44. Regularly \$1.25 and \$1.50. Tuesday 98

Curtain Stretchers Tuesday, 79c

Well Made Stretchers, of white wood, clean and well finished, fitted with nickel-plated, non-rusting and unbreakable pins, japanned wrought iron interlocking hinge, 1-2 inch scale on frame, size 12 ft. 0 in. x 6 ft. 0 in., when folded 6 ft. 0 in. x 4 in. x 3 in. Regular value \$1.25. Tuesday 79

FLORAL SWISS MUSLIN, 12 1/2c.

The softest and most delicate shades of blue, mauve, pink, green, yellow, violet and primrose; 36 inches wide, guaranteed, fast colors; beautiful for bedroom curtains, bedspreads, dresser covers or screens, and very durable. Half price 12 1/2

STENCILLED SCRIM, 30c YARD.

Bordered, with plain or figured centre, conventional and floral patterns, 40 inches wide, for the living room, dining-room, hall or library; also a few dainty floral designs in rose, blue and yellow; specially adapted to bedroom draperies. Very special, yard 30

ENGLISH CRETONNE, 35c YARD.

The variety of pretty designs and colors is past description; there are light and dark backgrounds, suitable alike for den, library, dining-room and bedroom. To buy right means to sell right. This cretonne is worth much more than marked. For Tuesday, at, per yard 35

WINDOW SHADES, 30c EACH.

Hand made, best quality opaque cloth, 37 x 72 inches, fitted in Hartshorn rollers, complete with brackets and pulls, good value at 70c each. Very special for Tuesday 39

Estimates and suggestions given without charge on all modern or period decorating, reupholstering, window shades, etc. Call phone or write. Drapery Department, Fourth Floor.

Bargains in China-ware

- Dutch Glass Water Jugs, gold band and white dot decoration. Regularly 39c. Tuesday 25
- Cut Glass Decanters, Regularly \$5.00 and \$7.50. Tuesday 3.49
- Coal Hods, black, with bright brass handles Regularly \$3.50. Tuesday 1.98

The Grocery List

- One Car Standard Granulated Sugar 18 lbs., 1.00
- Ogilvie's Royal Household Flour 34-bag, .85
- Post Toasties 8 packages, .25
- Choice Side Bacon, Peameal, half or whole Per lb., .20
- Finest Creamery Butter Per lb., .32
- Pure Kettle Rendered Lard 8-lb. pall, .51
- Finest Mild Cheese Per lb., .18
- Edwards' Evaporated Soups, white, brown and tomato 6 packages, .25
- 1000 lbs. Fresh Ginger Snaps 3 lbs., .25
- Pure Gold Quick Tapioca, Chocolate and Custard Powder 3 packages, .25
- Fancy Japan Rice 3 lbs., .25
- Pure Cocoa, in bulk, regularly 35c Per lb., .25
- Featherstrip Coconut Per lb., .19
- Canned Haddock, Golden Brand Per tin, .11
- Pickles, Mixed and Chow, 40-ounce bottle Per bottle, .25

Sale of Women's Sample BOOTS

Only the most expert workmen are selected for the making of samples, and, while the workmanship, material and finish are the very finest, they become slightly "scuffed" from handling.

We have secured over Two Thousand Five Hundred Pairs of "Queen Quality," "Relindo" and "Boston Favorite" Sample Boots, in a big range of new and exclusive Fall and Winter styles, at almost half-price, and have added one thousand pairs in regular sizes from other high-grade stock, in all leathers and styles. Sample sizes are 3 1/2 and 4. All sizes in the lot 2 1/2 to 8. Regular prices were almost twice as much as we'll ask you Tuesday 2.49

The **SIMPSON** Company Limited