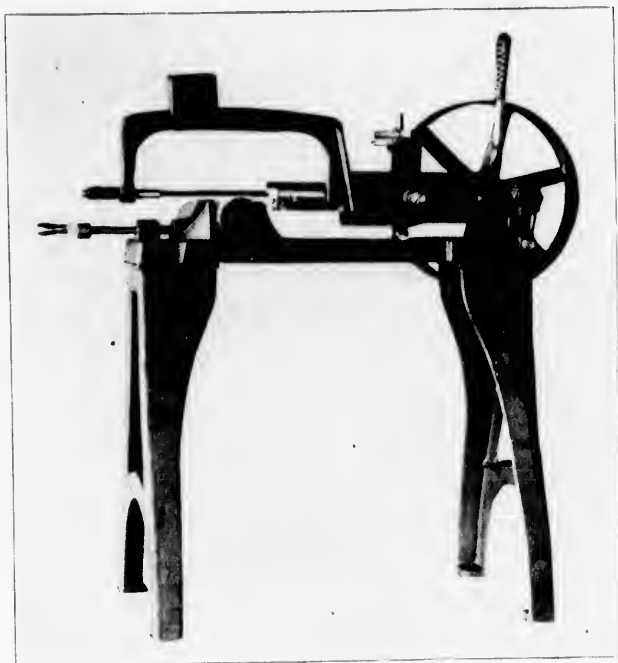


THE NEW Q & C SHOP SAW, No. 1

LATEST OUT LATEST DESIGN

Has Automatic Variable Feed which can be instantly changed without stopping the machine.
Is supplied with improved gravity feed for extremely hard metals of small size.



DETAILS

Capacity, 1 lb. Solids
Floor Space, 18 x 40 inches
Height, 26 inches
Weight, 130 pounds
Speed, 50 revolutions per minute
Size of Pulley, 11 x 2½ inches

Stroke of Saw Blade, 6 inches
Saw Blades, Q & C, 12 inches long
Gravity feed in connection with our adjustable power feed.
Automatic stop throwing out clutch
Perfect steel hardened saw guide



Our many years of experience in the manufacture of Metal Sawing Machines for all purposes, has led us to believe that there is a demand for a cheap shop saw of small capacity, and one which will cut tool steel as well as other metals. The No. 1 Shop Saw, as illustrated above was designed for this purpose and we now offer same to our trade, feeling confident that it will do this work and supply this long felt want for a cheap machine. This Shop Saw is our latest design and in the construction of same we have overcome the weak points of and greatly improved upon the old style machines, believing in so doing we would be able to furnish a cheap Shop Saw that would be entirely satisfactory to our large trade.

Sold complete, including six of our 12 inch Saw Blades, for tool steel.