

SUBSCRIBED CAPITAL, - - - - \$100,000.00
Amt. Deposits with Government of Canada, \$54,724.00

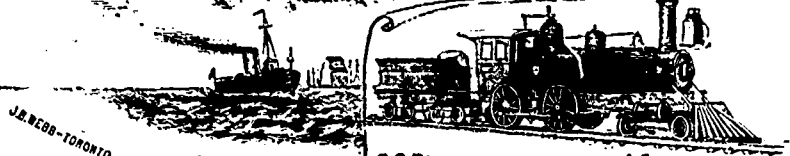
— AN —
 Efficient
 STAFF OF
TRAINED
Inspectors.

Prevention of
 Accident
 our chief aim.

THE BOILER INSPECTION and Insurance Company of Canada.

SIR ALEX. CAMPBELL, K.C.M.G. PRES
 (Lieut. Govr. of Ontario)
 JOHN L. BLAIRIE, Esq. VICE PRES.

THIS
ONLY
 Canadian
BOILER
INSURANCE
 Company
LICENSED



J. W. ROBB - TORONTO

CONSULTING ENGINEERS.

G.C. ROBB, Chief Engineer. A. FRASER, Secy. Treas.

HEAD OFFICE 46 KING ST.,

TORONTO.

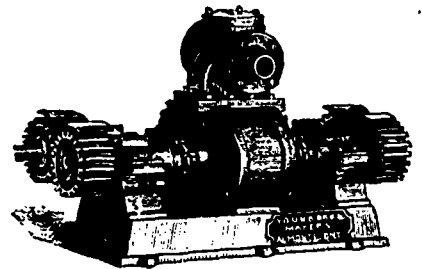
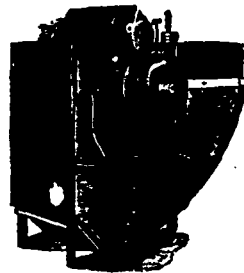
Economy of Fuel
 secured.

J. W. GRIER & MUDGE, Agents, 1725 Notre Dame St., MONTREAL.
O. E. GRANBERG, Resident Inspector, 1727 Notre Dame St., MONTREAL

COVEL & OSBORN,
MILL FURNISHINGS
 OF ALL DESCRIPTION

MANUFACTURERS OF
COTTON BANDINGS,
 Including Drum, Rim, Scroll, Spindle
 and Braided.
 Fall River, Massachusetts.

MISSISSIPPI IRON WORKS,
 ESTABLISHED 1875.



MANUFACTURERS OF ENGLISH OR AMERICAN FULLING MILLS & WASHERS, WOOL PICKERS, EXHAUST
 FAN DRIERS, DUSTERS, ROTARY FORCE PUMPS FOR FIRE DUTY, BOILER FEED PUMPS, SHAFTING
 HANGERS, CASTINGS, PULLEYS, GEARING, FORGINGS,
 Full equipment of mills of every kind.

YOUNG BROS., Almonte, Ont.

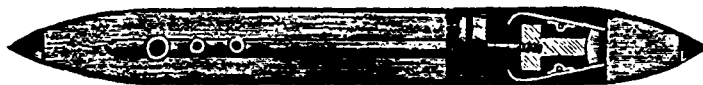
WILLIAM CRABB & Co

MANUFACTURERS OF ALL KINDS OF
*Hackle, Gill, Comb and Card Pins Picker Teeth, Needle
 Pointed Card Clothing in wood and leather for flax,
 jute, tow, etc.*

Hackles, Gills and wool combs made and repaired. Also, Rope Makers' Pins, Licker Pins, Special
 Springs, Loom and Shuttle Springs, English cast-steel Wire, Cotton Banding and General Mill Fur-
 nishings.

Bloomfield Avenue, & Morris Canal, Newark, N. J.

S. A. DUDLEY,
 Taunton, Mass.
Shuttles of all Descriptions.



SOLE MANUFACTURER OF

Dudley's Patent Double Outside Catch Shuttles.

The only double outside catch Shuttle made. Advantages over all other styles of Shuttles — 1st. It is
 impossible for the Bobbin to knock off or lift up while the Shuttle is in motion 2nd. always keeps the
 Bobbin pointing directly to the eye of the Shuttle. 3rd. It prevents the splitting of rims off of Bobbins
 4th. It is adjustable to different sized Bobbin heads in the same Shuttle. 5th. It never gets out of repair.
 Correspondence solicited.

The New Canadian Literary
 Magazine.

CANADA:

A Monthly Journal of Religion, Patriotism
 Science and Literature.

Edited by **MATTHEW RICHEY KNIGHT.**

CANADA will number among its con-
 tributors Charles G. D. Roberts, Archibald
 Lampman, J. M. Lemoine, James Macdonald
 Oxley, James Hannay, Arthur J. Lockhart,
 Thomas G. Marquis, Mrs. S. A. Curzon, Miss
 Mary Barry Smith, J. Hunter Duvar, Fred. E.
 G. Lloyd, H. L. Spencer, and many other well
 known Canadian writers.

CANADA will contain the following
 departments: Our Contributors; Red Pencil
 and Scissors; The Editor's Portfolio; The
 Editor's Table; Juvenile Canada; Olla
 Podrida.

Only 50 cents a year; five copies to one
 address, \$2 00. Canadian one and three cent
 stamps will be received in payment of single
 subscriptions. Send 5 cents for sample copy.
 Address: "Canada," Benton, New Brunswick.