

purchased for 25 cents. If ordered by mail, add 5 cents for postage. The length of the purse is a little more than 4 inches. A chain can be attached to the gate top if desired.

String the beads on the silk before commencing the work.

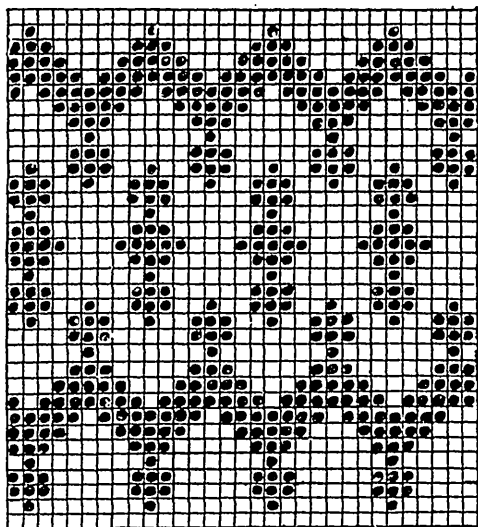
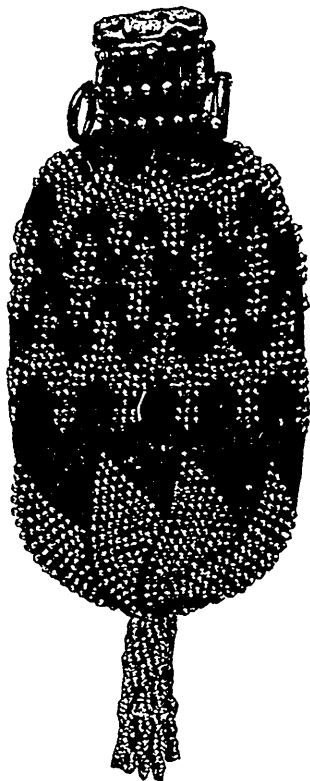


FIG. 285. DETAIL OF PATTERN, PURSE NO. 12.

A seven point star forms the bottom of the purse. Rules for this part of the work will be found under the head "Seven Point Star Pattern," on page 326. When the star is completed make three rows of plain crochet, increasing one stitch in each round, so that there will be 80 stitches when the pattern is begun. It is a simple matter to follow the design and no trouble will be experienced if the squares representing stitches are carefully counted. When the pattern shown in detail by Fig. 285, is completed, do one or two rows of plain crochet, and above this a row of open, that is, a double crochet in each alternate stitch with a chain stitch between, then fasten securely to the gate top. Other rules for crocheting purses and chatelaine bags will be found in the January and April 1900 issues of CORTICELLI HOME NEEDLEWORK. Copies of these numbers can still be supplied by the publishers for 10 cents each.

**Materials:** One  $\frac{1}{2}$  ounce spool Corticelli Purse Twist, Black. Three bunches No. 9 Steel Beads. One Oxidized Silver Gate Top. One No. 1 Star Crochet Hook.



CROCHETED BEADED SILK PURSE  
No. 12.

*ARTISTIC EMBROIDERERS USE ONLY B. & A. WASH SILKS.*