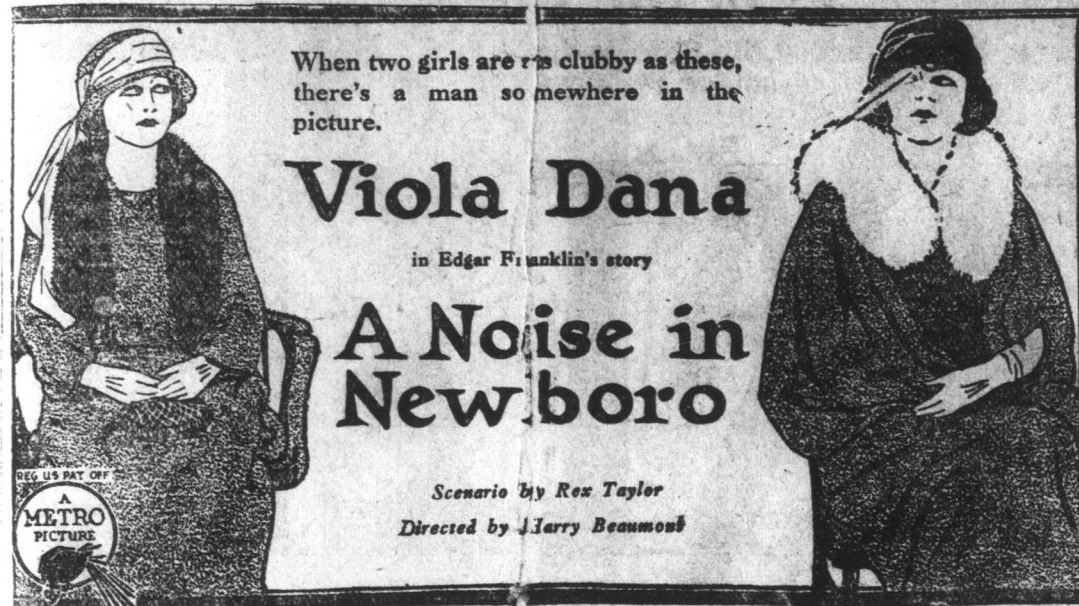


20 cts.  
AdmissionAt the NICKEL  
To-Day!20 cts.  
Admission

EXTRA ATTRACTION:

TWO-ACT CHRISTIE COMEDY, with BOBBY VERNON.

COMING:—"NELLIE THE BEAUTIFUL CLOAK MODEL." HAROLD LLOYD, in "HIGH AND DIZZY" and ELLINOR GLYN'S STORY. "THREE WEEKS."

## Christmas Gifts!

TEA SETS,  
DINNER SETS,  
BIBLESS TEAPOTS,  
ROSE BOWLS,  
MOUSTACHE CUPS & SAUCERS,  
SHAVING MUGS,  
FIRE-PROOF GLASSWARE, BABY PLATES,  
MUGS, VIEW-WARE, ETC., ETC.

S.O. Steele &amp; Sons, Ltd.

Opp. Seamen's Institute.

'Phone 192 100 Water St.

Father's Skin is  
Grafted to GirlWATERFORD MAN COMES TO AID  
OF HIS DAUGHTER.

NEW WATERFORD, Dec. 13.—Much has been said and written in prose, poetry and song of mother love, than which there is nothing finer, nobler or purer in a good old world, but a father's love is seldom the subject of an epic. It exists, however, as was clearly shown in New Waterford hospital on Wednesday. Little Miss Anna Cole was sometime ago severely burned with some new kind of stove polish exploding. Her neck, arms and hands were badly burned and she has been in hospital for several weeks. Lately things were becoming serious with the little maid and the doctors decided that skin grafting was necessary to give her a chance of recovery. The girl's father, Mr. Joseph Cole, immediately volunteered to give all that was necessary for his girl. The dual operations were staged Wednesday and the father was on the operating table two hours under ether while the doctor worked carefully cutting and grafting. Dr. Hartigan

was the operating surgeon and operated with his well known skill while all the other doctors assisted and with the nurses were ready to help in any way possible. It is too soon to remove the bandages to realize the full value of the operation but the girl is now resting easily and good results are confidently expected. The father is also resting nicely and will be all right in a few days. This is the first case of this kind in the new hospital and has created great interest among doctors and nurses and all those who have known or it hitherto. The general public will not be equally interested and will feel that something more can be recorded in regard to love and sacrifice than is usually credited to a man.

C.P.R.'s Bond Issue  
Off for Some Time

MONTREAL.—It is now almost certain that the C. P. R.'s big bond issue will be put off until after the turn of the year and in fact, may not come out at all as originally planned, various legal difficulties having cropped up in the way to delay the issuance of the bonds or notes in the form originally planned.

It is felt locally that the issue will be sold entirely in Canada in order to get wider Canadian interest in C. P. R. securities, and also to arouse interest in one of the main purposes of the issue, which is said to be the financing of a comprehensive scheme of immigration and development for the Dominion.

## Killed a Sentry a Day

War Story of Officer's Lonely Ranks to  
Avenge Company's Honour.

How an English Lieutenant took revenge for the capture of fourteen men of his company in the war was related by Viscount Hampden at Westminster City School.

"In July, 1918," he said, "the troops under my command were digging, and they had wrongly put their rifles down on the back of the trench. The Germans came over and took fourteen prisoners.

"Lieutenant Kermode of the West Yorkshire Regiment was determined to avenge our honour. He went out every day, crawling through the grass and gave the German sentry an after-noon bomb. It cost the Germans a sentry a day."

TRAIN NOTES.—Sunday's west-bound train was delayed by snow on the rails west of St. George's and did not arrive at Port aux Basques until noon to-day. The express for foreign connections went out at 1 p.m. The Carbonar train arrived at 12.45 p.m.

## NEYLE'S

SKATES.  
LEATHER HEEL.

Pair \$2.06

DUBLE RUNNER.

Pair 65c.

HOCKEY SKATES.

Royal, size 9 to 10½, pair \$1.50  
Belle, size 8 to 9, pair \$1.75  
Champion, size 10½ to 11½, pair \$2.60  
Beauty, size 9 to 10, pair \$4.25  
Varsity, size 10½ to 11½, pair \$4.25

STAINLESS  
DESSERT KNIVES.

Dozen \$7.00.

Table \$9.00 and \$10.50.

NICKEL TOWEL BARS.

Each \$1.60.

NICKEL SOAP DISHES.

WALKING STICKS

with spears.

70c., 90c., \$1.30.

Extra fine Walking Stick,

each \$3.00

SILVER PLATED

Tea Spoons, dozen—

\$2.80, \$3.30, \$3.80

Dessert Spoons, dozen—

\$5.00 and \$6.00

Table Spoons, dozen—

\$5.50 and \$6.60

Forks, dozen \$5.00 and \$6.00

SHAVING BRUSHES

Ea. 25c., 80c., \$1.00, \$1.25, \$1.75

SHAVING SOAP

35c. a stick.

The Neyle-Soper Bldg.  
Co., Ltd.

dec23,24

Died Suddenly

Mr. Joseph Downey, 50 years old, resident of Bell Street, was found dead in his bed at 3 o'clock this morning. The deceased retired at 9 o'clock last night and it was not until this morning, when his wife went to call him that she discovered he had passed away. Mr. Downey was for some years caretaker at the R. C. Cathedral but for some time past has been conducting a store on Henry Street. Three times during the past year he has met with loss through his premises being destroyed by fire. He leaves to mourn a wife, seven daughters and three sons to whom the Telegram extends sympathy.

MINARD'S LINIMENT FOR HEAD-ACHES.

MINARD'S LINIMENT, THE ATH-LETIC REMEDY.

Scientists Find Blood  
Does Not Show RaceGermans Used \$2,000,000 Fund from  
Rockefeller Institute for Two-Year  
Experiments.

Berlin, Nov. 26.—The Nordic professors who have been working for two years at Kiel University Medical School on the theory that race could be determined by blood tests, now state the theory has been exploded.

Two years ago the Rockefeller Institute granted the Kiel institution \$2,000,000 for research work. The professors came to the conclusion that diet and climate cause a difference in blood.

Germany is alarmed over the number of cases of sleeping sickness which follow influenza. Four hundred cases of sleeping sickness have been reported from the district near Hanover. Every case was preceded by influenza of the head. One-fifth of the cases of sleeping sickness are fatal.

Nervous breakdown also follows influenza and that has proved the cause of many deaths. The Prussian State Medical Association has placed a big fund in the hands of the doctors for research work in identifying the influenza germ and finding a cure.

We want fifty good sports at 4 p.m. in the Anderson building. Will you be there?—dec23,24

## Gas and the Next War

Kansas City Star: It needs to be borne in mind, that no great military innovations ever have been worked out in time of peace. The German general staff has been playing with the contrary idea, but simply under stress of circumstances. Unable to arm the German army with the heavy artillery used in the recent war, because of the watchful French, the staff has put forth the theory that heavy artillery is obsolete. It insists that since the armistice the theory of war has been revolutionized; that there will be no trench warfare in the next conflict; that it will be fought with highly mobile columns with tanks and airplanes and machine guns. These suggestions are scoffed at by the French, who point out that every new war begins where the last left off; that innovations worked out in peace cannot be trusted in a nation's defense, the stakes are too important; that any change in the art of war comes gradually under the stress of actual fighting, and that the infantry with its auxiliaries as developed in the late war remains the reliance of the nation.

The Big Value Raffle is opposite the Post Office, in the Anderson building. dec23,24

Loot Christmas  
Mail in LondonMotor Thieves Steal Many Mail Bags  
in St. Pancras.

London, Dec. 12. (A.P.)—Motor bandits early this morning raided a post office in the St. Pancras district and escaped with mail bags, variously estimated at from 16 to 100. The raid was made while a large extra staff of postal employees was dealing with the heavy Christmas traffic. The exact value of the loot is not known. Scotland Yard forces are using a special wireless equipped car to track down the robbers.

This is only one of numerous incidents in the crime wave of considerable proportions which has recently been sweeping London and the surrounding country, causing the police authorities great trouble. Reinforcements of police and detectives seem unable to intimidate the criminals who, during the past few days, have been aided in making their escapades by the extremely heavy fog.

The majority of the burglaries have been committed by "cat burglars" whose particular exploits include the climbing of drainpipes to reach rooms on the first and second floors of buildings. These burglars abstract valuable jewelry and vanish without leaving so much as a finger print. Another section of the criminals favors motor cars. They operate in the country districts and district suburbs, making hauls two and three times nightly without being apprehended.

Tickets only five cents for a twelve pound goose at the Belvedere wheel. dec23,24

Wolves Grow Bold  
in North Ontario

Sault Ste. Marie, Ont., Dec. 13.—(C.P.)—A report from Massey says that Fred Lemieux, a trapper, has taken three big timber wolves and a red fox in traps set about eleven miles back from town. Blind River reported that wolves are becoming unusually bold close to that town, many tracks of timber and brush wolves travelling in packs have been seen in the snow at Lake Mattindena.

Right next door to Goble's is the Belvedere Orphanage wheel.—dec23,24

MINARD'S LINIMENT, THE ATH-LETIC REMEDY.

A Few Christmas Shopping Hints  
from the  
China and Glassware

Qualities have been critically selected in the English and Foreign Markets by our own buyer.

CHINA BUTTER DISHES—Blue  
Dragon design, each \$1.25

Here is a very desirable dish for gift giving, and one that will be always appreciated, because of its service and durability.

WHITE AND GOLD CHINA CRIBETS—For salt, pepper and mustard. This is part of a very recent purchase of china ware and is considered extra good value. It makes a very acceptable Xmas gift and should prove a record seller at this low price, each 45c.

CUT GLASS BERRY SETS—Exquisite designs, richly cut in floral and sprig effects, and well finished in every way. Set consists of 7 pieces. With footed bowl, set \$5.75  
Bowl without foot, set \$3.50

CHINA ROSE BOWLS—Surfaced black with sprig of apple blossoms and edging as decorations. Gold finished metal top, to hold roses or flowers in place, each \$2.55

KRYS-TOL GLASS BERRY SETS—Of very high grade. Various designs in plain and fancy, with scalloped or plain edges. Made from one of the best grades of glass. Don't confuse them with low priced poor quality sets. Prices: \$1.95, \$2.20, \$2.65 to \$5.65 set.

What's more desirable for a Xmas gift than a set of

CHILDREN'S CHINA MUGS—Heavy quality, beautifully decorated in floral designs. Each 15c.

PLAIN GLASS BERRY SETS—Consisting of 7 pieces. Exceptional value. The set 60c.

## New Toilet Sets



We have them in all their beauty.

The very choicest shapes and designs. Some are tastefully decorated in Chinitz effects, others with wide bands of Celeste Blue or Pink and edging in Gold. And more are decorated with floral and leaf designs in colors of Blue, Pink, Brown and Grey. Qualities have been carefully selected. Prices are lower than ever, quality considered: \$6.25, \$7.25, \$7.50, \$8.55, \$9.20, \$9.55, \$10.25, \$10.60, \$11.20, \$11.95, \$12.50, \$14.45 and \$15.00.

White Granite Toilet Sets, \$2.00, 2.40, 2.90, 3.05, 3.25, 3.60  
Plain White Toilet Sets, \$3.00 and \$3.55

English China  
TEA SETS

Head and shoulders above anything of its kind is our value in English China Tea Sets. There is something decidedly fascinating about them. They attract the attention of every customer we serve, and the prices are so reasonable that buyers are already ordering their Xmas Tea Set gifts from our big assortment.

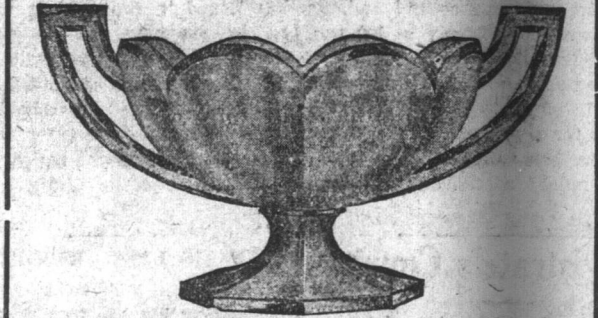
21 piece sets: \$5.50, 6.00, 6.75, 6.90, 7.40, 7.90, 8.95, 10.00, 12.00 and \$14.00

40 piece sets: \$10.60, 12.50, 13.50, 15.20, 17.90, 18.50, 20.00, 22.50, 25.00, 27.50 and 30.00

HAND PAINTED JAPANESE CHINA TEA SETS—21 pieces, consisting of Teapot, Sugar and Cream Dish, 6 Cups, 6 Saucers and 6 Teaplates, fancy scroll and scenic effects, elaborately finished with gold, set \$6.75

## -- DEPARTMENT --

where is to be found the finest assortment of gift-giving goods shown anywhere in St. John's.

Krys-tol Glass Compot  
\$2.10

Cut above shows it

Beautiful design, stands high, and serves as a decoration as well as a serviceable piece of table ware. Ranks high among the suitable pieces for gift-giving, each \$2.10

KRYS-TOL GLASS FLOWER HOLDERS—With plate for holding flowers in position. You should see these before you decide on what to give that very particular friend. High in quality and very reasonably priced, each \$2.45

CUT GLASS MAYONNAISE SETS—Consisting of plate, bowl and ladle. High grade glass of medium thickness, cut in handsome designs of flowers and sprigs. The set complete \$1.70

PLAIN KRYS-TOL GLASS MAYONNAISE SETS—Plate and Bowl only, very heavy quality; clear and sparkling. The set complete 95c.

Gift Suggestions!  
Rich, Cut Glass

Glittering Glass ware in scores of different pieces, most suitable for gift-giving.

CUT GLASS VASES—Way under price. No effort at all to sell such bargains as these; 6½ inches high. Each 45c.

CUT GLASS VASES—Various designs and shapes; 9½ and 10 inches high. They make excellent gifts when given in pairs. Each .90c., \$1.00, \$1.10 and \$1.20

CUT GLASS FOOTED BOWL—Beautiful design; stands on three feet and measures 8 ins. across top. Each \$2.40

BON BON DISHS—Exquisite design. They are so pretty we scarcely know how to describe them. We suggest that you see them yourself. Each \$1.40

HANDLED DISHES—With rich deep cutting of birds, sprigs and flowers. Every woman would love to give one of those. Each \$2.80

BASKET TRAYS—New and beautiful in design and serviceable in quality. Each \$1.00

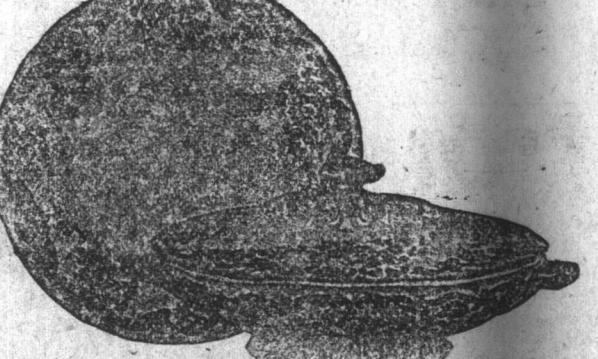
MARMALADE DISHES—We take much pride in showing these, and offering them as Xmas Gifts, because we know there are very few things you can give at this price that will be more appreciated. Each \$1.00

CUT GLASS PRESERVE BOWLS—Measuring 8 inches across top; elaborate design with deep cutting. Each \$1.10

CANOE SHAPED CELERY TRAYS—Nothing excels these for gifts, besides being very beautiful it is everlasting, except for one risk—of breaking. Each \$1.75

CUT GLASS SUGAR AND CREAM SETS—The most artistic shapes are here in patterns that will appeal. The set \$90c.

CUT GLASS CREAMS—Small size, beautifully cut and well finished. Each 35c.

Stock Patterns in  
DINNERWARE

White and Gold, Clifton Print, Blue Pekin, Harwood and Crown Derby Lorraine.

Now is the time for replenishing or starting to build up a dinner set that you will always feel proud to own. You will hardly notice the expense. Our stock patterns are handsomely decorated.

Each Piece is Separately Priced

Prices are lower than those quoted in any other store for the same grades.

NEW JARDINIERS—The splendid lines now shown in our Crockery Department are just what you will require to add to the attractions of your home during the festive season. Black China with Geese decorations \$1.95

Same design as above, in larger size \$3.35

TURQUOISE CHINA—Pretty moon-light scenes, very artistic \$4.10

PAINTED REDWARE—In various colors, each 95c.

Also larger size, to fit 9" pot \$1.55

HAND PAINTED JAPANESE CHINA CAKE PLATES—In various scenic effects, very elaborate in color, each 35c.

Photo Hangers, each 17c.

Sugar Dishes, common glass \$25c.

Holland Glass \$35c.

Fancy Glass \$90c. and \$5c.

Krys-tol Glass Ash Trays \$5c.

Pickle Trays, Krys-tol \$80c.

Small China Teapots, Blue dragon design 55c.

BLACK COCKATOO VASES.

Large size, pair \$5.30

Small size, pair \$3.90

CHINA VASES—We have reduced the prices of our entire stock of chinitz and fancy striped Vases. The variety is so great that we cannot give full details here. We invite you to come and see them. Price range from 59c. each up to \$3.89

Let your forethought be better than your hindsight.

Buy  
Your  
Tumb-  
lers

at the Royal Stores, Limited, and you'll have nothing to regret.

Common Glass Tumblers, 70, 75, 80 and 90c. doz.

Thin Glass Tumblers, etched; various borders \$1.60 doz.

Cut Glass Tumblers, \$2.20, 4.00 and 4.50 doz.

Krys-tol Glass Tumblers, \$2.40 and 2.65 doz.

Bell Shaped Sodas, \$1.10, \$1.25, \$1.55 & 2.60 doz.

Thin Glass Goblets, \$4.00 doz.

Thin Glass Sherberts, \$4.00 doz.

Glass Water Sets, consisting of large Water Jug and six tumblers to match, plain thin glass \$1.65

Cut Glass, grape or spring design, the set \$2.20

Krys-tol Glass \$2.25

Decanters, Krys-tol Glass \$1.50

Water Filters, 1½ gallon capacity \$3.80

Water Filters, 2 gallon capacity \$11.20

Stone Household Jars, \$2.00 and 2.15

Cut Glass Lemon Dishes \$1.00

Glass Measuring Cups \$1.5c.

Add to the pleasure and merriment of Christmas by brightening your home with

## Clarke's Fairy Lights

They give the greatest satisfaction.

Colors Ruby Blue Faint Prices 55c. 50c. 48c.

CLARKE'S CANDLES.

8 to Box \$45c. Box

12 to Box \$50c. Box

TUCKER'S WHITE CROSS CANDLES

12 to Box \$30c. Box

BULB BOWLS—Red Green and Silver, each 55c. & 70c.

CUT GLASS BUTTER DISHES—Each \$1.00

COMMON GLASS BUTTER DISHES—Each 22c.

KRYS-TOL GLASS BUTTER DISHES—Each 80c. & 95c.

KRYS-TOL GLASS DECANTERS—Each \$1.50

FOOTWARMERS 1.50 & 1.75

## The Royal Stores, Ltd.

## CROCKERY DEPARTMENT

dec15m,1n