

JOEL'S PORTABLE MILL

Is a Wonderful Combination of

**A FLOUR MILL, a CRUSHER, a GRINDER,
a CLEANING and a SIFTING MACHINE**

REQUIRES BUT TWO TO FOUR HORSE POWER

It forms a complete MILLING PLANT, built on the principles applied in large modern mills—THE ROLLER SYSTEM.

FOR MAN—It produces all grades of flour, from the coarsest to the finest household flour.

FOR ANIMALS—It produces the best form of foods, viz.—crushed or ground grain, with all its nutritive and fattening qualities.

It is the only Flour Mill, Grinder and Crusher combined, built for CAPACITY AND QUALITY OF PRODUCT, portable or fixed, AT POPULAR PRICES.

QUALITY OF PRODUCT results from its marvelous grain cleaning device and SELF-ADJUSTABLE SIEVE BRUSHES.

CAPACITY and ECONOMY of operation result from the adaptation of the ROLLER SYSTEM with partly fluted and partly smooth rollers.

In communities where conditions do not warrant the individual use of the JOEL'S MILL, its portability meets the case. Where small or large power is used for industrial or dairy purposes, the JOEL MILL fills a gap and will add considerable revenue to the operators without additional expense, while adding to the comfort and advantages of the surrounding section.

THE JOEL MILL is the last and crowning link in the marvelous chain of implements and machinery that make the farmers independent and self-sustaining.

THE JOEL MILL is completing its circuit of the world, and we can produce the highest testimonials from Switzerland, France, Germany, Austria, Italy, Russia, South Africa, Transvaal, Brazil, Chile, etc.

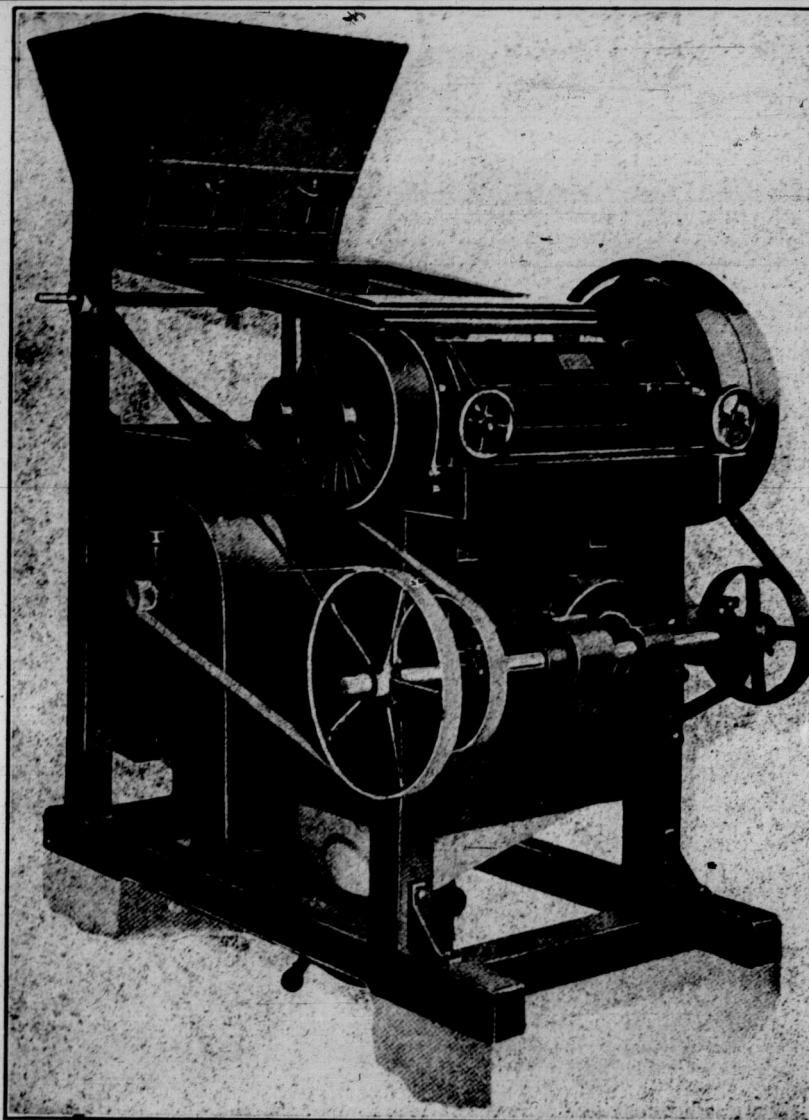
THE JOEL MILL IS BUILT TO LAST AND SOLD UNDER A GUARANTEE.

Reliable representatives wanted in every District. Write for our Special Dealer's Proposition.

Ask for descriptive Catalogue, sent Free on application.

BOURNIVAL & CO. Manufacturers and
Manufacturers' Agents

333-337 NOTRE DAME STREET EAST, MONTREAL, CANADA



Saskatchewan Section

This section of The Guide is conducted officially for the Saskatchewan Grain Growers' Association

Activity at Sonningdale

Please find enclosed an order for \$3.20, to be applied as follows:—
Three additional annual membership fees, for year 1913 \$1.50
One copy of Cushing's Manual50
One doz. copies executive's statement re "Sample Market"60
One doz. copies Mr. Woodbridge's article on "Cheap Money(?)" etc.60
Total enclosed \$3.20

Answering in reply to your questions re holding of district conventions, would state the following:—(1) This local is much in favor of district conventions, to be held sometime in November or December, and feel that a two-day convention of three sessions is preferable to a shorter one. (2) Battleford, North Battleford, is the most satisfactory point in district 2 in which to hold such a convention. (3) These should begin about December 1 and follow each other as closely as it will be possible for members of the executive to reach the different points. (4) It seems preferable that these meetings be conducted by the district director and the district secretary with the aid of yourself, Mr. Maharg and probably one or two others of the executive. (5) One delegate from each local would probably answer the purpose of the convention, but we see no objection to allowing each local Association the same number of delegates as they are entitled to send to the annual convention.

We are sending a delegate to meet the Royal Commission on Agricultural Credit and Better Markets in Saskatoon on Thursday, August 14.

Mr. Codner, of the Battleford Creamery, was present at our meeting on July 3 and gave much valuable information re the creamery business. On July 31 we were very fortunate in obtaining the presence of two able speakers on agricultural subjects, Professor Bracken and Professor Cutler, of the Field Husbandry Department of the College of Agriculture, Saskatchewan University. Professor Bracken dealt with the question of Soil Cultivation, and Professor Cutler took as his subject Forage Crops. Both these lectures were rare treats and will be of

great benefit to those who were fortunate enough to be present.

I read sometime ago that the executive contemplated outlining a course of studies to be followed by all the locals during the coming winter, and at the same time print list of books dealing with these subjects, giving prices of the same and where they may be obtained. I earnestly hope that you will do so at an early date, even if it should appear necessary to employ some outside help from specialists along these lines. It would be money well spent and would give a fresh impetus to the Grain Growers' movement.

Are the annual reports you speak of in circular of July 18 the same as the annual convention report or not? (Yes!)

I remain,

Yours sincerely,

LAWRENCE A. RATHWELL,

Sec.-Treas., Sonningdale G.G.A.

P.S.—Please find enclosed copy of resolution re Board of Grain Commissioners.

More Power for Grain Commissioners

A copy of a resolution re the Board of Grain Commissioners passed by Sonningdale Grain Growers' Association. Moved by J. W. Farnel, seconded by A. Johnston, and carried unanimously:—That we, the members of Sonningdale local of the Saskatchewan Grain Growers' Association, do herein express our approval of the work being done by the Board of Grain Commissioners, and hope that the Dominion government will give them such additional powers as the exigency of the occasion may require and justify.

Crocus Hill

Enclosed find order for 50 cents for which please send a copy of Cushing's Manual. As regards the district convention, I think Swift Current would be as central as any place for a convention in district 14. At our last meeting I was instructed to write you as regards a suggestion to the Grain Act as contained in following: Resolved, that the shareholders of the co-operative elevator should have the preference over the non-shareholders as to the special bins. Now this does not seem fair at all for an outsider to have the equal rights with the share-

holders. But perhaps you might explain it to us satisfactorily.

W. S. GLYDON.

Enclosed please find money order for 60 cents for which please send me six copies of statements on Sample Markets and Mixing, and six articles on the Cheap Money and Agricultural Credit Problem, by Mr. Woodbridge.

JEREMIAH RUDY,

Sec., Waterloo G.G.A.

McTavish Branch, S.G.G.A., No. 372-2m

Find enclosed \$1.00 for twenty copies of the Executive Statement to the Grain Commission on the Sample Market. I think every farmer should have one as there is something there that less than ten per cent of the farmers know anything about and is well worth studying.

W. LAKE, Sen.

Favor District Meeting

Enclosed find \$8.00, two for new members and balance for forty copies each; the Grain Commission on the Sample Market and Grain Mixing question, Cheap Money and Agricultural Credit Problem, by Mr. Woodbridge, and of annual reports. This branch is in favor of a district convention and recommend Morse as a suitable place; time about November 10.

FREEMAN DAY,

Sec., Dobson Branch

Sask. G.G.A., 163-29D.

Orders for Literature

Find enclosed post office order for \$1.20. Send fifteen pamphlets on Sample Markets and Mixing, made to Grain Commission, Winnipeg, May 27, 1913. Also send nine pamphlets of Co-operative Credit Societies, by P. P. Woodbridge (official circular No. 3). Please send these papers right away as we want to have them distributed among our members this week.

GEO. W. McLEAN,

Sec.-Treas., Craik G.G.A.

Many letters are reaching us that their reports are not published in the Saskatchewan section. Many of them would occupy the whole of the two columns allotted to us. There are over 700 secretaries sending in reports. It would take a year to get once around with ten reports in each Guide issue. The above letters are typical of the demand for our

pamphlets. We would have published these in The Guide and thus made it free to all, but the following letter from the editor will explain. I trust it will be satisfactory as we can supply all orders for the pamphlets as per price quoted in our circular.

F. W. G.

Dear Mr. Green:—

Your copy came in this week composed of your circular letter to the locals; Mr. Woodbridge's circular on Co-operative Credit and a statement of your executive on Sample Markets.

Just how to handle this I do not know. The Co-operative Credit circular has already been published in The Guide and the Sample Market article is too long to use in one issue, so the best thing I can do is to publish your circular without any additions.

If you would like to have the Sample Market article published in the Saskatchewan section I will be glad to use it, but it would have to run over several weeks as there are I estimate at least twelve columns in the article.

You might let me know what you would like me to do with it.

Yours very truly,

G. F. CHIPMAN.

All can get these pamphlets by sending to this office. Better not put in Guide.

F. W. G.

Urge Campaign Work

At a meeting of presidents and secretaries at Glen Eagle on July 1, Dr. Henry presiding, the following resolution was unanimously passed:—That this meeting urge upon the Central executive the necessity for carrying on campaign work as arranged at annual convention in Saskatoon.

JOHN McNAUGHTAN,

Hon. Sec., Committee.

Co-operative Supplies

Can you give us any information re the handling of flour and coal in car lots? Or is this purely a matter for local branches themselves?

H. J. HOBBS,

Sec., Ruthilda G.G.A.

Re coal, flour, twine, nails, barbwire, apples, posts, lumber, etc., write Grain Growers' Grain Company, Co-operative Department, Winnipeg.

F. W. G.

This Section o
ially for the
P. P. Wo
Alberta
U.F.A.

To the offic
..... Ur
Gentlemen:
pork packing
ber of reprint
mission on the
vince of Alber
1908, have be
gestion of the
being sent to y
supply is limit
additional co
in reason, if y
We would
particularly in
commendation
page 12 of th
particular im
widespread in
last time this
eration that th
the governme
due to the unf
the proposition
and from the
known as the
Plant.

A careful p
of this partic
you that the f
mise their supp
ing their hogs
among themse
to look after t
money is need
and to look afte
of the operato
a co-operative
ganized on mu
our elevator se
elect their ov
direct the affa
that body with
ory committee.

The part wh
called upon to
the money need
ate the plant in
the stockholder
of interest. Yo
commission mak
a charge of 1/4c
applied for the
the purpose of p
ment the origina
terest thereon.

In clause three
the withdrawal
first existing p
more convenien
with some other
date in his part
commendation is
will be handicap
or that they be
farmer shall be
per pound for
hog may be ship

The whole rep
terest, and well
tion. The gov
their willingness
mendations. It i
that never has th
so many hogs in
The C.P.R. figures
of this year show
been shipped alre
previous record in
72,000, and the re
not yet commence

This means th
made, and that o
the accommodation
handling of hogs
drop considerably
face the era of th
with every factor
Alberta completel
to handle what is
prospect in sight
the surplus.

One of the big o
past was that of
from the farmer.
well founded. In
co-operation is ear
similar guarantee
members. Remem
to promise your
plant, which will b
whom you elect, a
able that a body
a certain amount
plant is going to be
The government