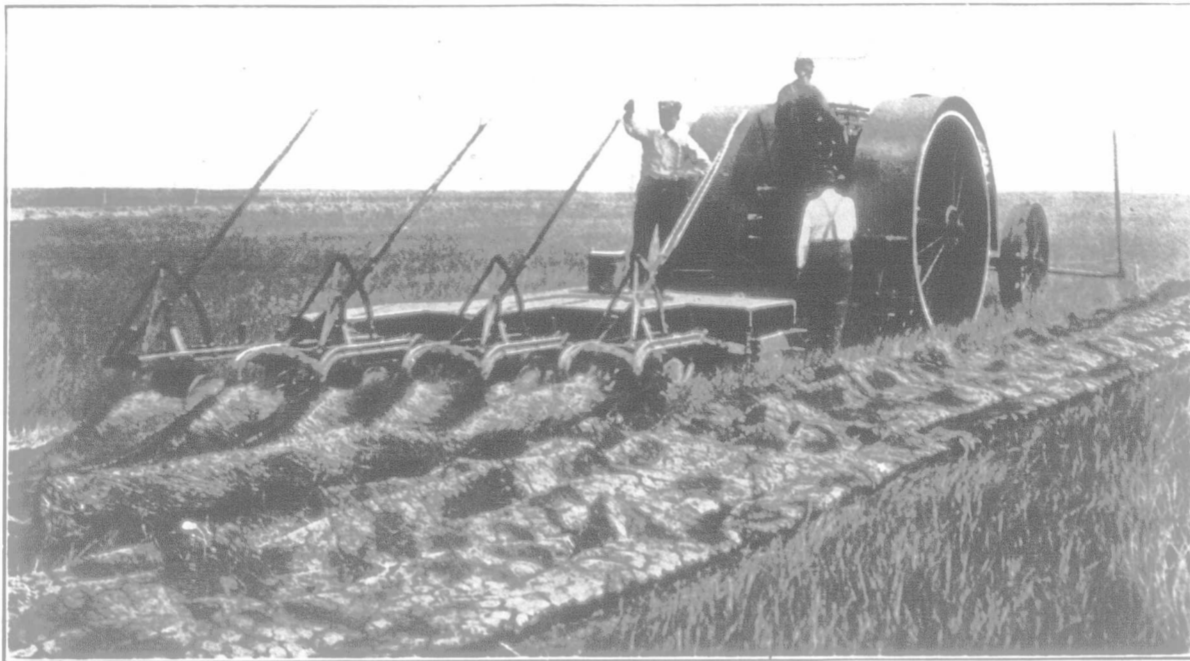


Well—The Great Plowing Contest is Over and the Gas Traction Engine Won the Gold Medal



GAS TRACTION ENGINE IN PLOWING CONTEST

Never before in the history of the world has there ever been a plowing contest like that conducted by the Winnipeg Exhibition this year.

It was as complete a test as competent committees and judges could make it—plenty of room, 320 acres; plenty of time, an 8 hour run—so that every detail of an engine had every chance to show what it could do.

The score sheet of the judges showed that engines were judged both according to a Brake Test and a Plow Test.

Brake Test showed the horse power hours per unit of fuel—the engine's steadiness of running—vibration, condition throughout, etc., etc.

Plow Test determined the fuel used per draw bar horse power—the acres plowed per hour per brake horse power—the quality of the plowing—the distance travelled per fuel capacity of engine—the general condition of the engine, the stops made, etc.; also the design and construction of the engine.

UNDER THESE EXHAUSTIVE TESTS THE GAS TRACTION ENGINE WON FIRST AND THIRD PLACE

Farmers of Western Canada will understand even more fully how complete, thorough and decisive this test was when they note who were the judges that awarded first place and third place to the Gas Traction Engine. They were:—

- Prof. A. R. Greig—Professor of Farm Mechanics and Engineering, The University of Saskatchewan.
- Prof. R. J. Smith—Professor of Farm Mechanics and Engineering, Agricultural College of Manitoba.
- Prof. J. B. Davidson—Professor of Farm Mechanics and Engineering, Ames Agricultural College, Ames, Iowa.
- Prof. L. W. Chase—Professor of Farm Mechanics and Engineering, University of Nebraska, Lincoln, Neb.
- William Cross—Formerly Superintendent of Motive Power, and Assistant to William Whyte, of the Canadian Pacific Railway.

THIS CONTEST PROVED OUR CLAIM

That is, that the Gas Traction Engine is the most efficient, most durable and least expensive in up-keep of any all-purpose farm power.

SURELY, SIR—you will now believe that the Gas Traction Engine is the engine for you. We have made big claims for it, but we backed our claims by our guarantee. Now both our claims and our guarantee are backed by the result of the World's Greatest Plowing Contest—by the decisive awards of such competent authorities as Prof. Greig, Prof. Smith, Prof. Davidson, Prof. Chase and Mr. William Cross.

NOW WILL YOU GET IN YOUR ORDER FOR A GAS TRACTION ENGINE?

The demand will be greater than ever, but we will still sell under our "Golden Rule" Guarantee.

IT GUARANTEES—The absolute accuracy and labor-saving ability of the self-steering device.

- The fuel consumed in plowing an acre of ground.
- The number of breaker and stubble plows the engine will pull.
- The size separator it will continuously and steadily drive.
- The material and workmanship for one year from date of engine's acceptance.
- Effective seeding.

Send in your orders now. Delay in ordering means more delay in getting your engine.

For engines to be used in Canada write The Gas Traction Co., Winnipeg.

For engines to be used in the United States write to the Gas Traction Co., Minneapolis, Minn.

THE GAS TRACTION COMPANY

Winnipeg, Man.

ounded 1866

Heart

TRUNG

orest Glen,
lly say that
Pills have
A few years
ed with my
ll unstrung,
hrough my
requent and
ontinuously
I had Mil-
recommen-
a box they
I continued
le to do my
ery grateful
with weak
ive them a

Pills are the
nd are sold
or 3 boxes
direct on
ilburn Co.,



Cure
nd treat-
ok of it
sured to
abolishes
ow old or
may have
to keep
healing
ation on
von in

printed
indexed
to copy
in
ntario

FS, Dehorn-
itters, Dil-
my Award
, St. Louis
atalogue.

t St., Chicago

adache

in such a
the health
ers." They
all dealers
powders.

1-5-0

ed it does
me extent,
e fruit left
of superior
e it brings

we have
fruit when
ie orchard
ll tend to
So it will
ant of No.
ly a small

MILTON. X

