

For some time past, the tendency has been to completely separate the ice house from the main building of the factory and to build it as economically as possible; as ice houses fall into decay very rapidly and that repairs are more easily made when they are separate and because, being constructed economically, they cost less money, custom seems to have established this as a rule and I would call particular attention to it.

In this case the refrigerator are found at the end of the building as shown in fig. 3.



Fig. 2.—Plan of creamery, capacity 10,000 to 15,000 lbs. of milk per day.

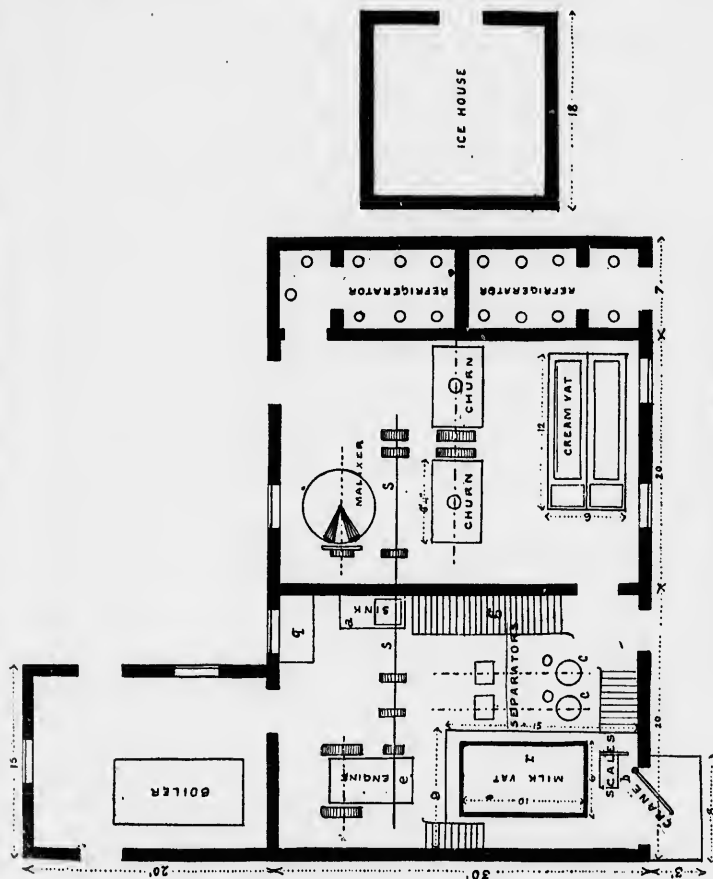


Fig. 3.—Plan of creamery with ice house apart.