

# Many budgets may be cut to 40% of request SU President opposes fee hikes

By SHELLY NELSON  
Brunswickan Staff

In response to the call for higher Student Union Fees, the Student Union President, John Bosnitch, has announced that he continues to oppose any proposal for increased fees. Bosnitch took this stand despite warnings of budget cuts from Student Union financial administrators.

Bosnitch said supporters of the hike consistently "forget" to mention that the UNB Student Union had the largest surplus in its history in the fiscal year 1982-83. He further declared that the "Student Union has a massive capacity to generate money through the establishment of commercial enterprises and the streamlining of its service operations."

When asked about alternative income from the Student Union, President Bosnitch made specific reference to government grants and university support transfers.

This summer the UNB Stu-

dent Union received the highest federal funding in the constituency of York-Sunbury, and sponsored a total of more than 40 full time jobs for students. Applications are now in progress for extended year round grants from federal and provincial departments amounting to approximately one hundred thousand dollars annually.

Claiming that university support for union finances at UNB is lagging behind that of other schools, Bosnitch indicated his desire to obtain an unrestricted annual operating grant from the administration of at least \$25,000 in return for services rendered to the university community. He cited the case at the University of Alberta where the Student Union receives a 'no-strings attached' grant from the university.

Bosnitch stated his determination to see his policy on lower fees continue exclaiming, "When I was first elected as Engineering Representative to the Student Council, I pro-

mised to stop the rip-offs, stop the fee-hikes, and at long last, provide essential services to the students. I am not about to give up now." Expressing dismay at the continued efforts of the 'student establishment' to raise fees, Bosnitch called on all students to resist the institution of unnecessary and exorbitant student taxes.

When contacted for reaction to the Bosnitch stand, a

representative of the Administrative Board of the Student Union, which is responsible for finances stated that although there was a net surplus two years ago, last year's spending resulted in a net deficit. There is still a reduced surplus carried over from two years ago, but the A.B. spokesman said that it is a good policy to not spend retained earnings on day-to-day

expenses because some years will have surpluses and others will have deficits --these should be allowed to naturally even themselves out. He said increased fixed costs and an increase in the number of sponsored organizations will result in many budgets being cut this year to less than forty percent of what was requested.

## CSL Vs. SMOKE SHOPPE: A Consumers Comparison

### Opinion

By PETER THOMPSON  
Brunswickan Staff

The CSL exchange has now become quite an issue on campus, and is in direct competition with the well established Smoke Shoppe.

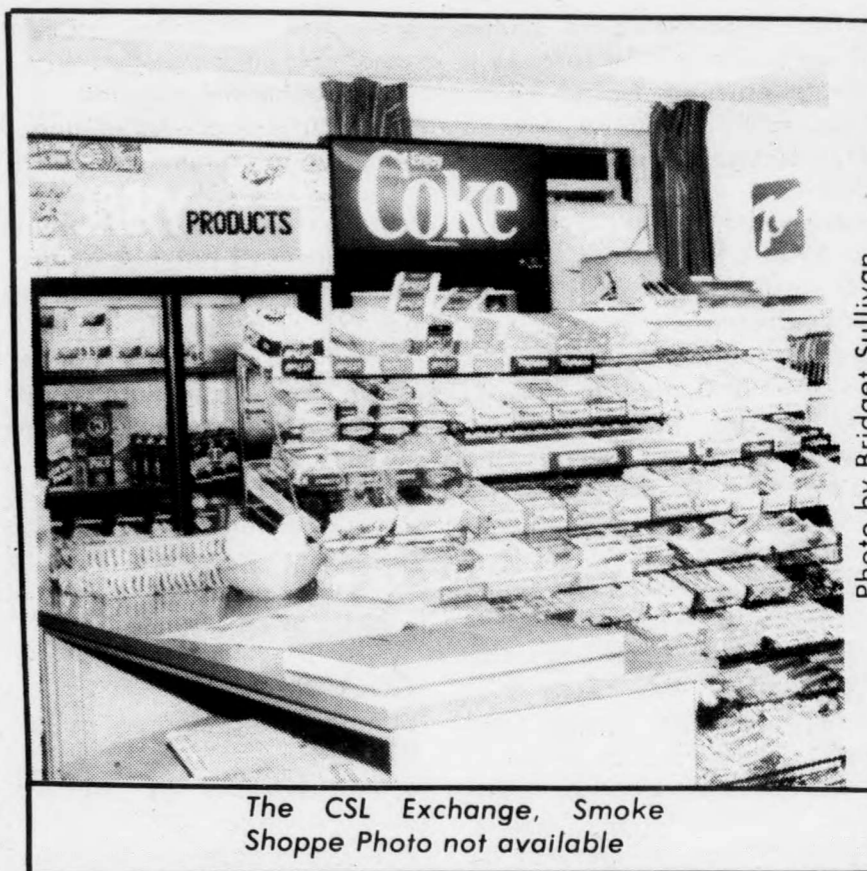
But aside from the fact that the CSL Exchange is student run, how do the two stores compare from a consumer's point of view? Which serves the students' needs the best?

Of course, we need a set of criteria by which to compare the two stores. Prices are obviously important, as are the range of stock, hours of operation, and the speed of service. But employee courtesy and the size and location of the store is also a factor.

In the price category, the CSL definitely comes out the winner. Virtually every common item is priced lower at the CSL Exchange, ranging upward from 5¢; discounts are usually 10 or 15 percent. For example, cigarettes are \$2.30 at the Smoke Shoppe and \$1.95 at the CSL Exchange. Also important is the fact that the Smoke Shoppe does not competitively price many items that are not sold at the CSL Exchange. For example, 1 litre of homogenized milk is \$1.20, compared to \$.97 at the grocery store. The CSL Exchange however, sells all of its items at a minimum markup to the consumer: although CSL is registered as a profit making corporation its student management does not have profit-making goals.

The ranges of stock of the two stores vary greatly. The Smoke Shoppe carries far more items than the CSL, and of the items that both stores carry, the Smoke Shoppe generally has a far greater variety. Examples of this are cigarettes and school supplies.

The CSL Exchange has photocopiers, textbooks, cups of coffee, and a few other



The CSL Exchange, Smoke Shoppe Photo not available

things the Smoke Shoppe does not, but the Smoke Shoppe's list of exclusives is far greater; magazines, shirts, grocery items, and beer mugs to name a few.

The CSL Exchange asserts itself with its hours of operation: 126 hours per week compared to only 76 hours for the Smoke Shoppe. It is open from 8 a.m. - 2 a.m. daily and the Smoke Shoppe from 9 - 9 Monday to Friday, and 1 - 9 on Saturday and Sunday. CSL however, is not always very punctual in the mornings. It is sometimes not open until 8:15 a.m. or 8:30 a.m., something which is annoying if you want to buy cigarettes, or a pen for your morning classes.

The two stores ranked closely with respect to their speed of service. Neither store is very crowded in the morning or evening: the busiest time is at noon-hour Monday to Friday. The Smoke Shoppe was usually faster at this time, so it gains a marginal edge in this category.

Again, the stores ranked

close when comparing the courtesy of their employees. Neither store had employees that were downright rude, but the service was not always very friendly at either store. There are, of course, employees at both stores who were very polite and helpful; so I will have to rate both stores about equal.

With regards to the size and location of both stores, the Smoke Shoppe is the obvious winner. It is closer to the blue lounge, the Social Club, and the Cafeteria, and this is where most students spend time in the SUB. It is also far larger than the CSL, a place that can get very cramped, especially at the noon-hour.

Overall, a rating would depend on the value of each of these categories. If price is the most important thing to you, and the CSL carries what you want, then go there. But if you want to shop around for your school supplies, or cigarettes then go to the Smoke Shoppe. The choice is up to you.

## Bosnitch Press Conference

On October 2, Student Union President John Bosnitch called a press conference to inform the public on the current problems between the Student Union and the UNB Administration.

In defining the outline of the 3CF funding, Bosnitch stated that \$65,540 was collected last September, 1983 from students, minus the rebates, to be included in the 3CF Fund. In October, the university gave the Student Union \$40,000 to be used for rebates. However, it took ten months for the remaining balance to be turned over to the Student Union. According to Bosnitch, roughly 40% of the students claimed and received their rebates, leaving a total of \$38,770 to go towards the 3CF Fund.

Regarding the SUB controversy, the UNB Student Union is appealing to obtain a 99-year lease on the SUB and also a contract that will outline the students' right in terms of ownership.

If St. Thomas Student Union adopts this action as well, then the initiative will be pushed forward resulting in a student-run student-owned SUB.

As chairman of the SUB, Bosnitch contended that there is no disarray concerning the finances of the SUB and that there have been no complaints from the auditors.

He went on to call for a public audit of all the books, claiming that a conflict of interest arises when the SUB Board hires their own auditors to handle their books.

## Return of the 'Smoker'

By L. ANDREW SMALL

This year, the Engineers are bringing back "The Smoker", a tradition that had been lost for several years. In its true form "The Smoker" is a road trip to who knows where?! Only a handful of people know where the buses are going.

Once on the buses, the party begins and upon arrival at the

destination, the party accelerates with movies and music. Sometime later the buses load up again with their weary Engineers and return them to Head Hall.

"The Smoker" is on Tuesday night of Engineering Week, October 9, 1984. Look for posters in Head Hall for further information.