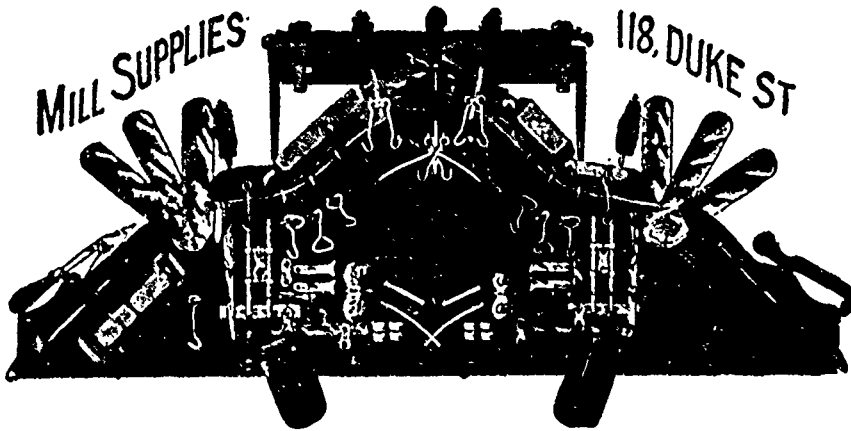


GEORGE REID & COMPANY

SUCCESSORS TO
PAUL FRUND WOOLEN MACHINERY CO., Limited



WOOLEN MACHINERY

Cards, Mules, Looms, Pickers, etc. All kinds for sale.

WOOLEN MILL SUPPLIES

Every description kept in stock.

WOOL

Sole Agents for FRANCIS WILLBY & CO., Bradford, Eng. A large stock always on hand.

BEAM WARPS

Sole Agents for HAMILTON COTTON CO.

MILLS FOR SALE

CARD CLOTHING

Our MR. REID is Sole Agent for Messrs. Samuel Law & Sons, Cleckheaton, Eng., and has always a large stock on hand.

G. B. FRASER,

3 Wellington Street East
TORONTO

REPRESENTING

Miller Bros. & Co., Montreal; Paper and Celluloid Collars, Cuffs and Shirt Bosoms.

W. D. VanEgmond, Seaforth Woolen Mill; Etoffes Friezes and Tweeds.

I. A. Teskey, Appleton, Ont., Fine Tweeds and Cassimeres.

D. Fisher, Paisley, Ont., Etoffes and Tweeds.

John J. Ashley & Co., Bradford, Eng., Dress Goods and Worsteds.

Horner, Dettermann & Co., Barmen, Germany. Buttons, etc.

S. W. Whitlam, Leeds, Eng., Woolens.

Merrim & Print Mfg. Co., Lowell, Mass.

Burton Bros. & Co., New York; Linings, &c.

H. T. Lamkin & Co., Cotton Brokers, Vicksburg, Mississippi; Long Staple Cotton a specialty.

COP TUBES
Cones & Shells
WORSTED TUBES
Conical Tubes
MAILING TUBES
Haworth & Watson, LOWELL, MASS.

ESTABLISHED 1865

GEORGE W. PAYNE & CO.

PAWTUCKET, R. I.

Builders of the

PAYNE & MATHEWSON



PATENT UPRIGHT CONE WINDERS

For Hosiery purposes,

Winding from Cop, Skein or Bobbin

SKEIN SPOOLER

with adjustable skein holders for cotton wool and worsted. Upright Quillers, quills from cop, skein or bobbin, Ring, Dresser, Spooler and Reel Spindles, Cop Skeiners, Warp Spools, Spooler Guides, Bolsters and Steps made and repaired at short notice.

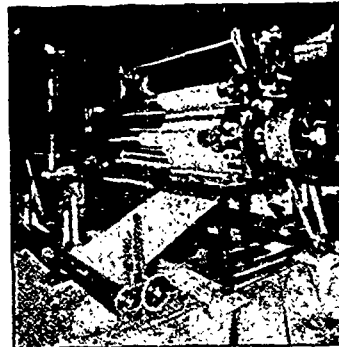
DEROCHIE BROTHERS, Cornwall Ont.

We build

NAPPING MACHINES

up to 60 inches wide, to nap one or two pieces in width. The machine naps cotton or woolen goods; can either furnish folders or winding attachments; this machine is so geared that the changing of small gears changes the nap on cloth that is needed. The main shaft is 3 1/2 in. in diameter. All Roller Bearings are bronze and self-oiling. All Rolls are made of hydraulic piping—and every part of the machine is first-class in every respect.

Some of the machines are running at Canada Mills, Cornwall; Montreal Cotton Co.'s Mills, Valleyfield; Wm. Parks & Sons, St. Johns; Dominion Cotton Mills, Halifax.



The
Underwood

Visible writing start to finish—tabulating attachments for invoicing, billing, etc. No extra cost, easy touch, rapid action, handsome designs—

. . . fully guaranteed. . .

All other makes, new and second-hand,
at reduced prices.

GREELMAN BROS. TYPEWRITER CO.

15 Adelaide Street East, TORONTO