

???

DISCRIMINATING Sportsmen are enthusiastic over the many novel features of the SAVAGE .22-Caliber Repeater. It is hammerless, shoots the short, long, and long rifle cartridges, all in the same arm, and its accuracy alone has placed it in a class by itself.

Write to-day for Catalogue H free
Our 1904 Calendar sent on receipt of ten cents in stamps

SAVAGE ARMS COMPANY

UTICA, N.Y., U.S.A.

BAKER & HAMILTON, San Francisco and Sacramento, Cal., Pacific Coast Agents

Power Skiff

For particulars write—

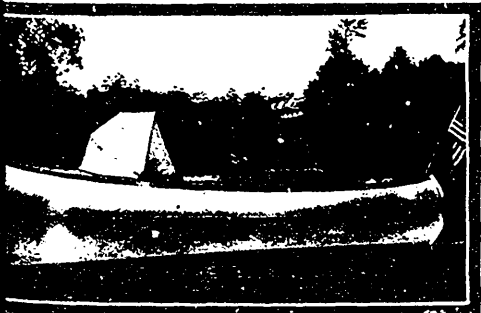
16-foot double end clinker built skiff to carry four, with 1-horse power motor in stern; weighs complete, ready to run, 200 lbs.

The Canada Launch Works, Limited,

(Foot of Carlaw Avenue)

TORONTO, ONTARIO, CANADA.

\$150



The Matthews TORPEDO LAUNCH

Largest builders of high-grade hulls for Gasoline Engine Manufacturers in America. Any length from 16 to 75 feet.

Hunting launches, Cruising launches, Cabin launches, Automobile launches.

Write us and let us tell you more about them.
ANY POWER INSTALLED.

The Matthews Boat Co.

BASCOM, OHIO, U.S.A.