

DOMINION LINE

MONTREAL TO LIVERPOOL

S.S. Canada, Sept., 10th S.S. Megantic, Sept. 17th
 S.S. Dominion, Sept. 24th S.S. Laurantic, Oct. 1st
 S.S. Canada, Oct. 8th

(All above Steamers carry passengers)

MONTREAL TO BRISTOL

S.S. Welshman, Sept. 10th S.S. Manxman, Sept. 24th
 S.S. Cornishman, Oct. 8th

Favorite steamers for all kinds of perishable cargo, having fan ventilation, cold storage and cool air chambers.

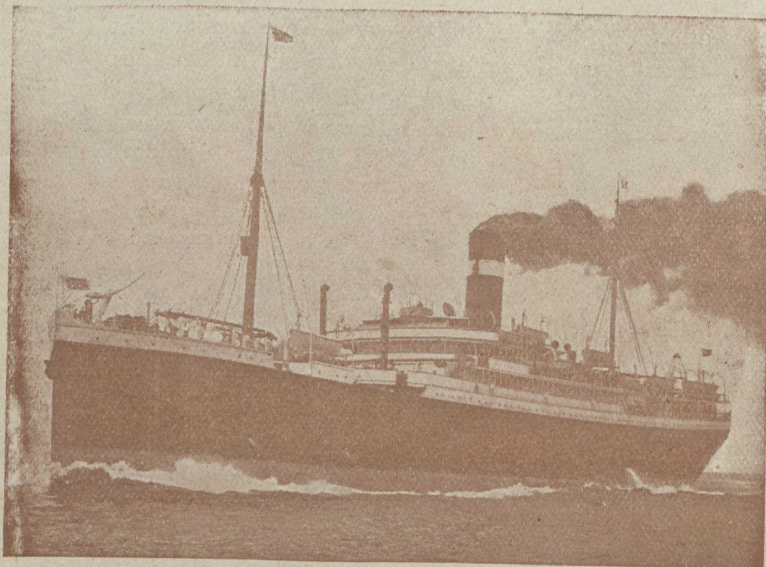
DOMINION LINE

M. A. OVEREND }
J. W. WILKINSON } Travelling Freight Agents

MONTREAL OFFICE, 118 Notre Dame St. W.
PORTLAND OFFICE, - - - 1 India St.

GEORGE W. TORRANCE, Freight Agent,
28 Wellington St. E., TORONTO

Mention The Canadian Horticulturist when writing.



ALLAN LINE

ROYAL MAIL

WEEKLY SERVICES

VIA
The St. Lawrence Route

30-STEAMSHIPS-30
(176,000 TONS)

The First Transatlantic Line to adopt Turbine Engines.

SAILINGS AS UNDER:

FRIDAYS FOR LIVERPOOL
 SATURDAYS FOR GLASGOW
 SATURDAYS FOR . . . LONDON and HAVRE

THE ALLAN LINE

Has Spared No Expense in Equipping Cold Storage, Cool Air and Ventilated Chambers, for the carriage of Fruits, Meats, Butter, Cheese and other Perishables.

VIRGINIAN Triple Screw GRAMPIAN }
 VICTORIAN Turbine Engines HESPERIAN } Twin Screw
 TUNISIAN } Twin Screw IONIAN }

And 23 Other Ships

Record Passage Liverpool, 6 days 15 hours, 3 minutes.
Record Passage Glasgow, 6 days, 18 hours.

For Full Particulars apply to

The ALLAN Line, 77 Yonge St., Toronto