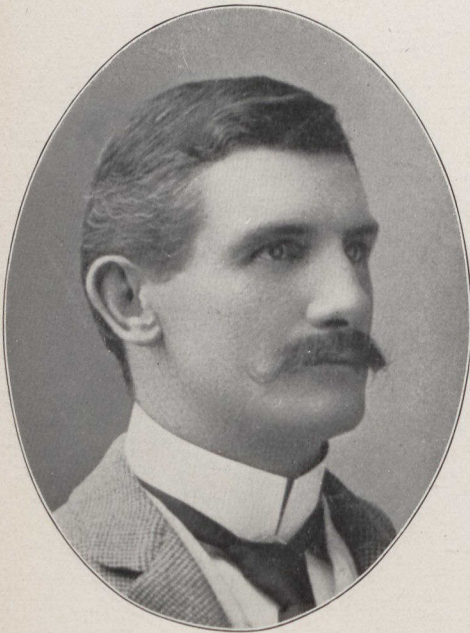


ROBERT N. GOOCH, J.P.;
RESIDENT AGENT NORTH BRITISH AND MERCANTILE
INSURANCE COMPANY,
TORONTO.



FREDERICK H. GOOCH,
AGENT NORTH BRITISH AND MERCANTILE INSURANCE CO.;
EMPLOYERS' LIABILITY ASSURANCE CORPORATION; NEW
YORK PLATE GLASS INSURANCE COMPANY, TORONTO.



G. H. MUNTZ,
OF MUNTZ & BEATTY, INSURANCE MANAGERS QUEEN AND
CALEDONIAN INSURANCE COMPANIES,
TORONTO.



EDGAR ALEXANDER BADENACH,
GENERAL AGENT UNION ASSURANCE SOCIETY OF
LONDON, ENGLAND,
TORONTO.