

Fresh GROCERIES

JUST IN:
10 cases Norwegian Smoked Sardines, 30 tubs Clover Leaf Can. Butter, 5 bags Peanuts, 2 cases Naples Walnuts, 35 cases Dates—1 lb. pkgs. Fish Cheese, 15c. tin; Cod Tongues, 15c. tin; New York Corn Beef, 5 cas. s Fresh Eggs, 10 cases Large Lemons, 10 kegs Scotch Oatmeal, 10 kegs Scotch Pearl Barley, Hartley's Jams and Marmalade.

PURITY FLOUR HIGHEST GRADE OBTAINABLE.
STEER BROTHERS.



BALL BAND!

\$5.60.

Ball Band or Red Balls, as they are sometimes called, is certainly the **BEST RUBBER** made. We have a full stock of **BALL BAND RUBBERS** now on hand.

\$5.60.
F. SMALLWOOD,
THE HOME OF GOOD SHOES.

WE'RE EASY!

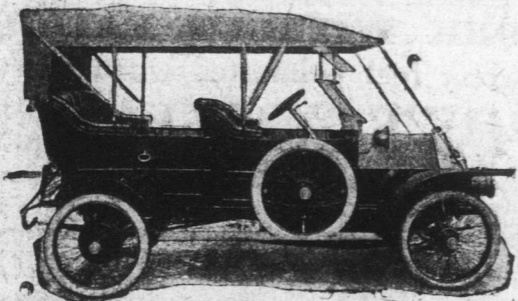
Five Dollar Greenbacks are Burning Holes in Our Pockets

Do You Want One?

Save the Alphabet Cards in all Pound Packets of Union Blend Tea, bring to us and get the money

H. W. de FOREST TEA CO'Y.

1911 BELSIZE



Manufactured by the **BELSIZE MOTORS, LTD., Manchester.**
For Catalogue and particulars apply to **MARTIN HARDWARE CO., Agents.**

BEWARE of INFECTION!

The doctors tell us that one of the greatest carriers of infection is **MILK**—that thousands are killed annually by germ-laden milk—that the only safe way is to use milk that has been thoroughly **STERILIZED**, such as

Reindeer Brand Condensed Milk—Sweetened; and

Jersey Cream—Unsweetened.

Manufactured and Guaranteed by

THE TRURO CONDENSED MILK CO., LTD., Truro, Canada. mar21,eod

Job Printing Executed

New School HATS

(FOR GIRLS)

GIRLS, Our New Spring School Hats are Now Opened.

SEE OUR NEW

AEROPLANE SCHOOL HAT

(-IN BURNT ONLY.)

With Assorted Green, Navy, White and Pale Blue Bands,

Only 70 cents each.

(See Window.)

S. MILLEY, Water Street.

REID NEWFOUNDLAND COMPANY.

REDUCED RATES

Pacific Coast Points

Commencing now and continuing up to April 10th. Tickets will be sold at greatly reduced rates to Vancouver, B.C., Seattle, Washington, Portland, Oregon and various other places on the Pacific Coast.

For full information apply to General Passenger Agent or to nearest Station Agent.

Reid Newfoundland Company

J. J. ST. JOHN, Duckworth-st.

The "Durango" brought us a shipment of

CHOICEST IRISH BUTTER,

HARTLEY'S ASSORTED JAMS

JACOBS' ASSORTED BISCUITS,

BIRD'S EGG POWDERS.

J. J. ST. JOHN, Duckworth St.

Job Printing Executed

Apples and Vegetables.

Per S.S. Durango To-Day.

50 barrels Choice **APPLES,**
10 barrels **CARROTS,**
20 barrels **PARSNIPS.**

GEORGE NEAL.

If You Want to Know Where to Get Your

Boots and Shoes

FOR HALF THE MONEY, go to the

White Shoe Store, 304 & 306 Water St.,

You can't miss it, all painted **WHITE.** Extra Bargains for this week only in **Ladies' Misses' and Men's BOOTS.**

Ladies' \$2.50 Boots, now \$1.50
Ladies' \$3.00 Boots, now \$2.00
Misses' Boots, sizes 11 to 2, only 98 cts.
Men's \$3.00 & \$4.00 Sample Boots, selling at - \$2.50

S. B. KESNER, Proprietor.

ROBT. TEMPLETON

A SPECIAL PURCHASE OF

Ladies' Costume Cloths

IN POPULAR SHADES, AT

90c., \$1.00 & \$1.20.

336 WATER STREET

THE JOHNSTON WOOD COMPANY.

FACTORY: Long Pond Road.

Phone: 730.

Manufactures Doors, Sashes, Mouldings, Mantels, Turned and Built Newell, Store and Office Fixtures, all kinds of interior and exterior house finish. Special rates to contractors. Get our prices for anything you need in House-finish before purchasing elsewhere; it will pay you to do so. All enquiries from Outports promptly replied to. No order too large or too small, they will all receive our best attention. If you need Boxes we make them. Phone us for anything in our line—it will pay you.

The JOHNSTON WOOD CO.

OFFICE: Prescott Street.

PHONE: 657.

Molasses!

JUST RECEIVED,
ex schr. Golden Hind,

250 Puncheons New Barbadoes Molasses.

HARVEY & CO.

Our Satisfied Customers are Our Best Assets

WE OFFER TO-DAY:
PRIME TIMOTHY HAY,
HEAVY BLACK OATS,
BRIGHT YELLOW CORN,
BRIGHT YELLOW CORN MEAL,
CATTLE FEED, STRAW, BRAN.

F. McNAMARA, QUEEN STREET.

WEATHER FORECAST
TORONTO, To-Day—34 to fresh S. and S. E. wind with a little higher temperature Tuesday—S. E. winds light to gales with slight rain.

VOLUME XX

AUCTION SALES

THE PEOPLES AUCTIONEER

At the Residence of **CAPTAIN SMIT**
30 Cookstown Road.
To-morrow, **TUESDAY, 28th**
at 10.30 a.m.
Household Furniture and Eff.

One handsome golden oak side with bevel plate mirror, 1 do extra dining table (9 ft. long), 6 chairs and 1 carver with leather—all to match; 1 wire clock; 1 some bronze clock, 3 very pretty vases and 1 claret set, 1 liquor glass stand, 1 walnut centre table with good engravings, 1 carpet square, canvas, curtains, poles and crockery and glassware, 1 lamp, 4 volumes Universal Dictionary of the English Language, 1 bird and cage, 1 handsome fern-reading lamp, 1 hand lamp, 1 upholstered in leather, 1 large, 1 superior barometer, hat, 1 hall lamp, 1 stair canopy.

No. 1 Bedroom—1 handsome oak dressing case with bevel-mirror, 1 bedstead and washstand, 1 wire mattress, 1 toilet, 1 large cane seat rocker, 1 work, 1 handsome water colour, lac-tains, blinds and poles, canopy floor, hearth rug and mat.
No. 2 Bedroom—1 handsome enamel and brass full size bedstead, 1 superior spring bed—quite new toilet set, floor canopy, 1 window curtains, pole and blinds, 2 brackets, 1 single bedstead.
Kitchen—1 No. 6 lateral oak table, 2 tables, 3 high back chairs, 1 high chair, washtubs, pots and kitchen canvas, 4 pictures, 1 enamel 2-crust case, 1 other box and sundries.
P. C. O'DRISCOLL, Auctioneer
mar27,11

Bovril

Comprises all that is good in and that only.

It has for many years been used as a beverage or pick-me-up by the traveller, the athlete, the business man and housewife, on the ground that it is wise to take it and keep rather than to wait until you are ill. Supplies may be had from

T. J. EDENS,

Sole Agent for Nfld.

10 cases just in by Shenandoah, 1 oz. bottles, 1 oz. bottles, 8 oz. bottles, 16 oz. bottles, Virol, Marol, Vibros, Inv, Bovril and Bovril Wine, in all sizes.

Fresh Beef, Mutton, etc.

Ex "Durango,"
Fresh Beef, Mutton, Lamb, Geese, Fresh Butter.

Lowest Prices to Clear,
JAS. R. KNIGHT
311 Water Street.

LONDON DIRECTORY

(Published Annually)

ENABLES traders throughout the World to communicate direct English

MANUFACTURERS & DEALERS in each class of goods. Besides being complete commercial guide to London and its suburbs, the Directory contains

EXPORT MERCHANTS with the goods they ship, and the Colon and Foreign Markets they supply.

STEAMSHIP LINES arranged under the Ports to which sail, and indicating the approximate sailings;

PROVINCIAL TRADE NOTICES of leading Manufacturers, Merchants, etc., in the principal provincial and industrial centres of the Kingdom.

A copy of the current edition will be forwarded, freight paid, on receipt of Postal Order for 20s.

Dealers seeking Agencies can advise their trade cards for £1, or large advertisements from £3.

THE LONDON DIRECTORY CO.
25, Abchurch Lane, London, E.