

as might have been anticipated. This high-priced, too high for export purposes it is said. On the local market it shows little change. Eggs retain their firmness, and, indeed, have made another slight advance.

Wool.—The offerings are more liberal and they are being taken up at the old prices. There is very little of special note to be commented on under this heading at the present time.

Flour and Grain.—Flour is somewhat stronger in tone than it was, though actual business is on the dull side. Mill-feed still keeps high-priced, though an easier feeling has developed on account of pastures becoming more available. Oats are quite strong in tone.

Groceries.—Sugars of all grades have gone up 10c. per cwt., and the enquiry is noted to be a trifle brisker this week. However, the movement is not a heavy one as yet by any means, and probably will not become so until the preserving season sets in. Valencias are very high, being quoted now at 6c. Other dried fruits have made no specific change, but prunes are very firm indeed. Almonds sell at 13c. Apricots are out of the market. No further development has taken place in canned goods, which are very firmly held.

Hardware.—All lines of building material are moving out rapidly. Orders for such are large and frequent, and prospects for a continuance of the present large volume of trade are promising. There is continued strength in the iron market, as well as in several of the other metals, though tin has slumped. An English advice just to hand says that there has been a good trade in pig iron during this month, and prices have improved moderately, say some 6d. to 1s. per ton. Latterly there is some falling away in the volume of business, but values all round remain steady, and there is no want of confidence in the position. The manufactured iron trade is in satisfactory condition, works being well supplied with orders: rail makers are especially well placed. Copper, after falling 30s., has improved again, and is at present firm at slightly above the quotation of a month ago. Tin has had a most extraordinary month, advancing some £20 to £203 during the first fortnight, and since falling to £188 10s. Spelter has steadily gained 12s. 6d. per ton, and is firm. Lead has advanced about 20s., and is at present strong.

Hides and Skins.—Spring hides are now coming in more plentifully. Trade is good, but without special feature.

Provisions.—Cheese prices fell last week, but a brisker trading is the result. The business may now be said to be more on an export basis. The quality of offerings has improved notably the last week or two. Butter is still very

high-priced, too high for export purposes it is said. On the local market it shows little change. Eggs retain their firmness, and, indeed, have made another slight advance.

Wool.—The offerings are more liberal and they are being taken up at the old prices. There is very little of special note to be commented on under this heading at the present time.

—A lady going from home for the day locked everything up well, and for the grocer's benefit wrote on a card: "All out. Don't leave anything." This she stuck on the front door. On her return home she found her house ransacked and all her choicest possessions gone. To the card on the door was added: "Thanks; we haven't left much."

—Sacred Heart Review.

## OVER \$500,000 A MONTH

is the average of new business now being written by the Great-West Life Assurance Company. Over \$25,000,000 of Insurance is in force.

This for the reason that the insuring public are recognising more and more that a Great-West Policy offers all that can be desired in Life Insurance—low rates, high profit returns, and the safeguard of careful, conservative management.

Ask for rates at **your own age.**

**The Great-West Life Assurance Company,**  
HEAD OFFICE, WINNIPEG.

## Confederation Life Association

HEAD OFFICE, - TORONTO.

### OFFICERS:

W. H. BEATTY, Esq., PRESIDENT.

W. D. MATTHEWS, Esq., FRED'K WYLD, Esq., VICE-PRESIDENTS.

W. C. MACDONALD, Sec'y and Actuary.

J. K. MACDONALD, MAN'G DIR.

### DIRECTORS:

W. H. BEATTY, Esq.

Hon. JAMES YOUNG.

S. NORDHEIMER, Esq.

W. D. MATTHEWS, Esq.

A. McLEAN HOWARD, Esq.

E. B. OSLER, Esq., M.P.

FRED'K WYLD, Esq.

GEO. MITCHELL, Esq., M.P.P.

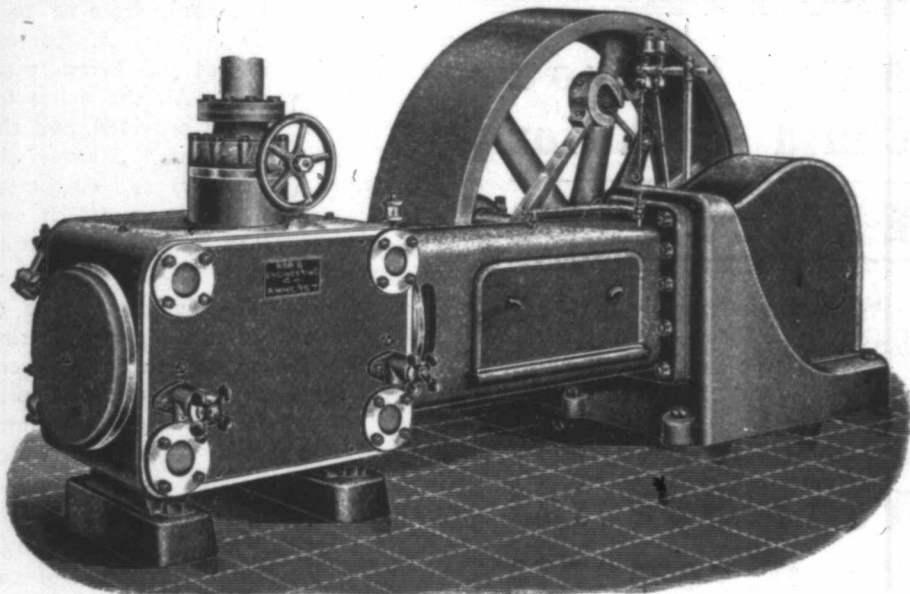
WILLIAM WHYTE, Esq.

Hon. Sir W. P. HOWLAND.

J. K. MACDONALD, Esq.

D. R. WILKIE, Esq.

Policies issued on all approved plans.



Our Corliss Engines are fitted with Robb-Armstrong Corliss valve gear which has the following good points.

**Positively Driven  
Encased in Oil**

**Runs Noiselessly  
Minimum Friction**

**Minimum Wear**

**Robb Engineering Co., Ltd.,**

AMHERST, N.S.

**District Offices**

320 Ossington Avenue, Toronto. Wm. McKay, Manager  
Bell Telephone Bldg., Montreal. Watson Jack, Manager  
355 Carlton Street, Winnipeg. J. F. Porter, Manager