



## You can't beat it!

**THE** roofing material our fathers—our grandfathers—used on their buildings. The material that makes a roof which gives a generation and more of perfect service.

Although men have for years been experimenting with roofing materials, there is today known to the builder, engineer or scientist no more lasting and satisfactory product than

## British Columbia Red Cedar Shingles

Decay proof, weather resisting, storm defying—its solid cedar covering of a uniform thickness of 1 inch provides a roof which, when properly laid, gives a lifetime of satisfactory service without repair or renewal.

Send for our Shingle Booklet—tells you all about British Columbia Red Cedar Shingles—why they are superior—proofs as to durability, etc.—a handbook every person intending to build should read.

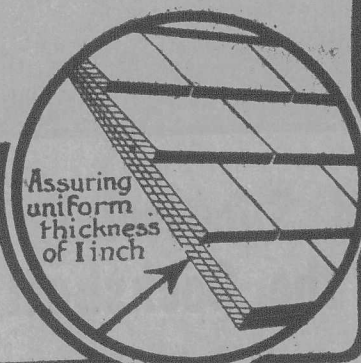
Trade Mark Reg.

Trademarked British Columbia Red Cedar Shingles are true to grade—you can get them from your local dealer.



THE  
**SHINGLE AGENCY**  
OF  
**BRITISH COLUMBIA**  
Standard Bank Building,  
VANCOUVER, B.C.

Assuring  
uniform  
thickness  
of 1 inch



## Food Will Win the War

Serve your country and yourself by raising FOOD on the fertile plains of Western Canada. The Canadian Pacific Railway makes it easy for you to begin. Lands \$11 to \$30 an acre; irrigated land up to \$50, 20 years to pay. Loans to assist settlers on irrigated lands. Get full particulars and free illustrated literature from

**G. A. Muddiman,**  
Land Agent, C.P.R.  
Montreal, P.Q.

Fair One.—I'm afraid these Louis XV heels are too high for me. Perhaps you have lower ones—say about Louis X.—Orange Peel.

## HELP SAVE WESTERN CROP

**\$12.00 TO WINNIPEG**

From all stations, Sudbury, Milnet, Ont., south and east in Ontario and Quebec.

Plus half a cent per mile beyond.

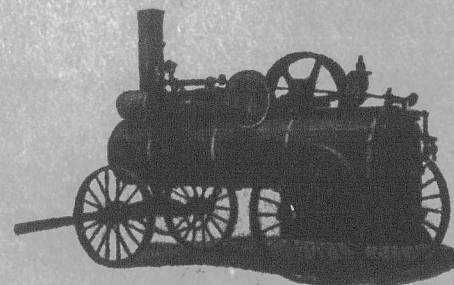
Returning, half a cent per mile to Winnipeg, plus \$12.00

Comfortable Trains and Through Service; Special Accommodation for Women, Lunch service at moderate prices, and a Scenic Route when you travel C. N. R.

Through tickets by all lines. For further particulars see your nearest C.N.R. Agent, or write General Passenger Dept., 68 King St. E., Toronto, Ont. Ask for "Harvesters' Work and Wages" leaflet.

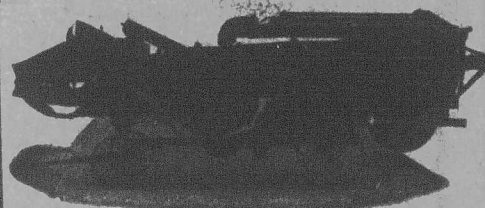
**CANADIAN NORTHERN RAILWAY**

## Rebuilt Portable and Traction Engines



A number of good rebuilt engines from 14 H.P. up, suitable for Threshers' and Farmers' own use.

## SEPARATORS

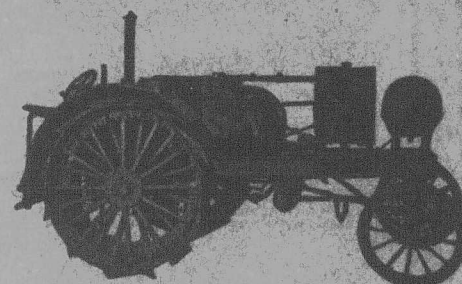


New and rebuilt Separators, all sizes from the individual Farmer's Thresher to the largest size.

WRITE FOR FURTHER PARTICULARS

The Robt Bell Engine & Thresher Co., Ltd., Searforth, Ont.

## The Waterloo Boy



The Three-Plow Tractor for Ontario. The Tractor that makes good.

The Tractor that has stood the test

The Tractor that is guaranteed under all conditions.

Write for free catalogue, prices and any information wanted.

**THE ROBERT BELL ENGINE & THRESHER CO., LIMITED**

Selling agents for Ontario. Searforth, Ont.

## Grow Registered Seed

of the following pedigreed varieties developed at the Michigan Agricultural College and Inspected, Approved and Registered by the Michigan Crop Improvement Association.

### RED ROCK WHEAT

A pure, winter hardy, excellent milling high yielding wheat.

### MICHIGAN WINTER BARLEY

The best northern grown winter barley.

### ROSEN RYE

The rye that has nearly doubled Michigan's acre yields and is giving exceptionally good results in many other States. Remember rye cross fertilizes so get pure seed from farmers who have produced it under inspection.

For list of those having it for sale, write the Secretary of the Michigan Crop Improvement Association.

J. W. Nicolson,

East Lansing, Michigan.



SEALED TENDERS addressed to the undersigned, and endorsed "Tenders for Temporary Barracks, Rosedale, Toronto, Ont." will be received at this office until 12 O'CLOCK NOON, TUESDAY, AUGUST 27, 1918, for the construction of temporary barracks, Rosedale, Toronto, Ont.

Plans and specification can be seen and forms of tender obtained at the offices of the Chief Architect, Department of Public Works, Ottawa, and the Clerk of Works, Postal Station "F," Toronto, Ont.

Tenders will not be considered unless made on the forms supplied by the Department and in accordance with conditions set forth therein.

Each tender must be accompanied by an accepted cheque on a chartered bank, payable to the order of the Minister of Public Works equal to 10 per cent. of the amount of the tender.

By order,

R. C. DESROCHERS,

Secretary.

Department of Public Works,  
Ottawa, August 9, 1918.