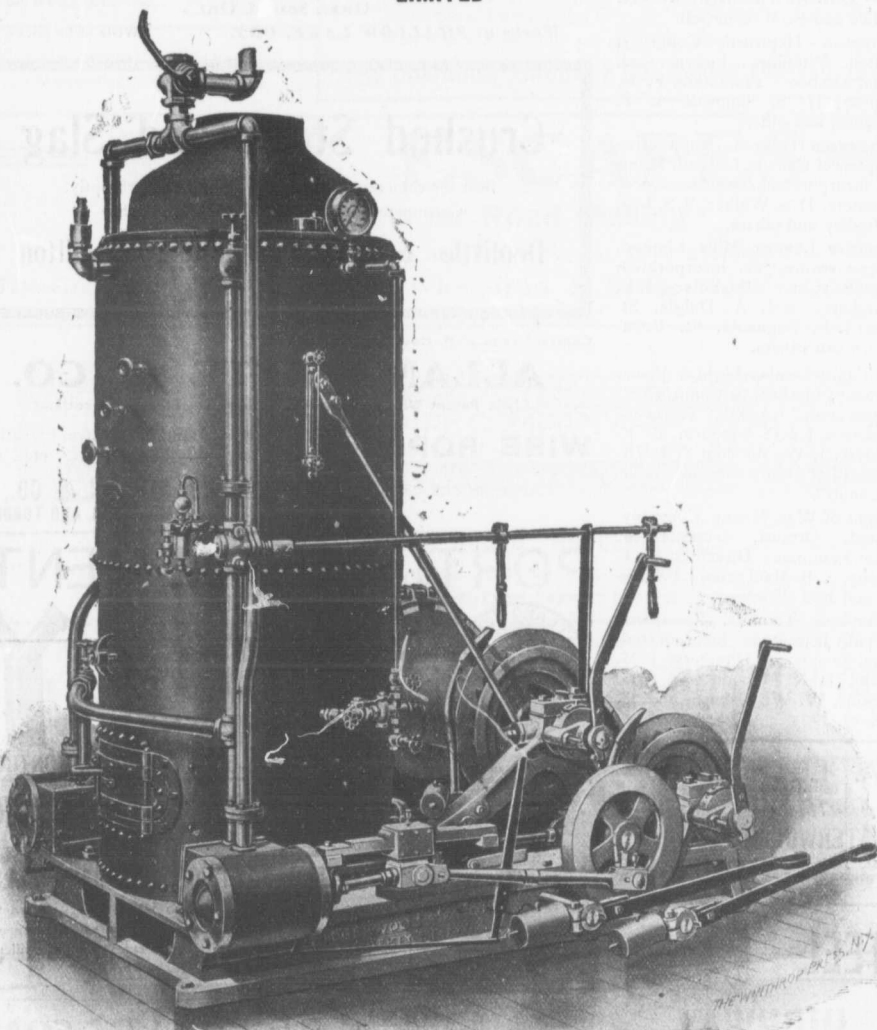


August 8, 1906

CANADIAN CONTRACT RECORD

ALLIS-CHALMERS-BULLOCK LIMITED



"LIDGERWOOD" DOUBLE DRUM HOIST

This Hoisting Engine, built by us from Lidgerwood designs, is of the most improved type where two independent drums are required. It is specially adapted for pile driving, dock, and bridge building, quarries and railways.

HOISTING ENGINES

ROCK DRILLS

AIR COMPRESSORS

ROCK CRUSHERS

BALLAST UNLOADERS

STEAM SHOVELS

ELECTRIC LIGHT PLANT

Head Office and Works : MONTREAL

**District
Offices :**

{ MONTREAL : Sovereign Bank Bldg.
NEW GLASGOW : N.S. Telephone Bldg.
WINNIPEG : Canada Life Bldg.

TORONTO : McKinnon Bldg.
NELSON : Josephine St.
VANCOUVER : 416 Seymour St.