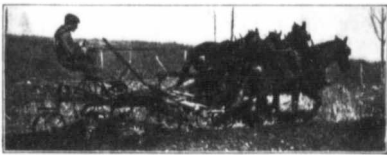


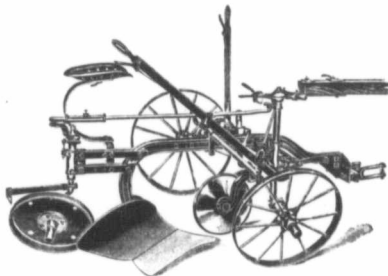
Massey-Harris High-Grade Farm Implements



A Plow You Can Depend On

The Great West Gang Plow can be depended on under any and all conditions. Wheels are set well out, making the Plow run steady. It is amply strong for all conditions of soil. Convenient Levers and easy-acting Foot Lift make it easy to handle.

Bottoms are of the well-known standard of Massey-Harris construction. Also made with Single Bottom.



A Good Sulky Plow at Moderate Cost

The Golden Age meets the demand for a medium priced Plow, simple in construction, easy to operate and light in draft.

The Beam is of extra heavy, High Carbon Steel and is of good height to give ample clearance. Cross Bars are of High Carbon Channel Steel and extend across from Wheel to Wheel—not divided in the centre. Handy Levers give the operator perfect control of the Plow.

Everything that is Best

In Farm Machinery,
Wagons, Sleighs, Etc.

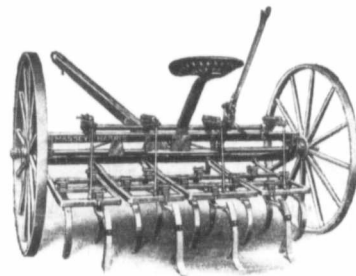
is found in the
**Massey-Harris
Line**



An Effective Disc Harrow

The Pressure Springs hold the Gangs to their work regardless of dead furrows, ridges, etc., and cause the Discs to penetrate soil which would otherwise raise the inner ends of Gangs and leave portions of the field untouched.

One end of either Gang may rise to pass an obstruction while the balance of the Harrow remains at work.



A Spring-Tooth Cultivator

Will Kill out the Weeds

Weeds are Robbers—they rob the plants of moisture and plant food, and also deprive them of the needed light and air.

A Massey-Harris Cultivator will clean out the most obstinate weed pests, conserve the moisture and put the land in splendid shape for the sowing of a crop.

A Cream Separator which saves all the Butter Fat

The Improved Bowl on the Massey-Harris Separator handles hot or cold milk without loss of Butter Fat. All parts of the Bowl are Nickel-Plated, making it an easy matter to keep it clean.

A Simple Speed Indicator enables the operator to turn it at the right speed to get the best results.

From 200 to 1000 lbs. Capacity.



A Reliable and Economical Engine

You'll always have power when you want it, and at a very low cost if you instal a Massey-Harris Gasoline Engine.

Easy to start in any weather and gets all the power there is in the gasoline.

This, together with its simplicity and durability, makes it without exception, the most Reliable and Satisfactory Engine on the market to-day.

Stationary or Portable.

1½ to 20 Horse-Power.

Toronto, Montreal, Moncton,
Winnipeg, Regina,
Saskatoon, Swift Current,

Massey-Harris Co., Ltd.

Yorkton, Calgary, Edmonton.
E. G. Prior & Co., Ltd.,
Victoria, Vancouver, Kamloops.

On pay
found pa
tractive
Thresher
made to
ject is to
its paid
said this
about the
explanati
War o
printing
zine conti
day we a
list and e
own quot
seeking t
in the cha
serious ed
quality, ch
every deta
ment.

It is th
which we
test of this
it for the
the success
the last ti
uniform sa
every one
If they did
they have
dollar's wo
Briefly,
some "C
1916 mod
who correc
ber of whol
one-quarter