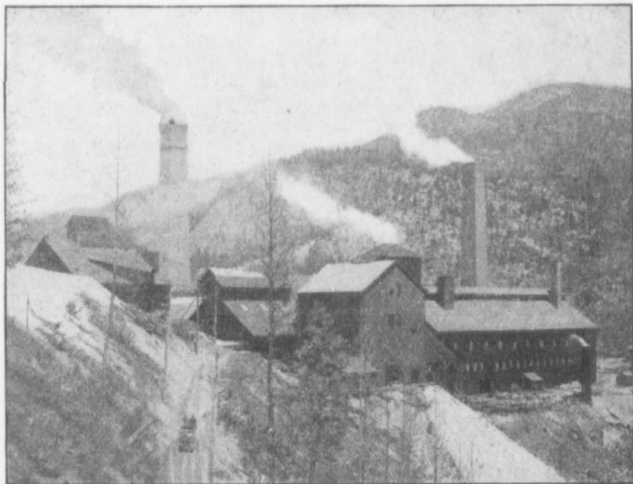


the value reaching up into the millions. On Tracy Creek, 14 miles north of Fort Steele, is a camp which is developing silver-lead and some copper properties. Still further south on Moyie Lake are large silver-lead lodes, as at the St. Eugene Consolidated mines. The large ore bodies on the shores of Moyie Lake run 30 oz. of silver and 60 p.c. lead, but are more cheaply worked than those of the Slocan, and are said to be larger deposits. There are also rich gold and copper mines on St. Mary's River, and a number of properties are being developed. Perry Creek, 12 miles west of Cranbrook, shows a series of gold-bearing quartz veins for an unusual distance on the surface, but so far only one property has been developed to the mining stage. An extensive bed of iron ore is being developed near Kitchener.

WEST KOOTENAY.

Marvellously rich deposits have been discovered in different sections of



THE SMELTER, TRAIL, B.C.

West Kootenay, and new finds are frequently made. It is a country of illimitable possibilities, but only few parts of it, when the vast area of hidden wealth is considered, have passed beyond the early stages of development. Great strides, however, have already been made, notably in the Trail Creek, Ymir, Nelson, Kaslo-Slocan and Ainsworth districts, where many properties are completely equipped with costly modern plant for mining operations. In