

ing collar is at the neck. A set of braid passementerie contributes effective decoration for the wrists, lapels and rolling collar.

The skirt is a stylish example of the popular bell modes. It is hung over a four-gored foundation-skirt and presents sheath-like closeness at the front and sides, while the back is disposed in fan-plaits and is extended in a slight train, which may, however, be cut off if a skirt of round length is preferred. The skirt is garnitured with two embroidered silk ruffles, which are arranged in a fanciful manner a little to the right of the center of the front; and the ruffles are continued in a prettily curved line almost to the right hip, where their ends disappear beneath a rosette-bow of satin-edged grosgrain ribbon, from which long ends of similar ribbon fall nearly to the edge of the skirt.

A superb toilette may be developed by the mode in faille, Bengaline or corded silk, combined with brocade, Pompadour silk or some other handsome fabric for the vest fronts. Bedford cord, faced cloth, vicuna and vigogne will also make up attractively in this way, and the decoration may consist of soutache braiding, gimp, galloon, Escorial embroidery, etc., with, perhaps, a frill or plaiting of the material for a foot trimming.

The hat is a turban shape in French chip having a soft fancy crown. It is tastefully trimmed with stiff loops of ribbon.

FIGURE No. 413 T.—This consists of a Ladies' bell skirt and



FIGURE No. 420 T.

FIGURES NOS. 420 T AND 421 T.—LADIES' COSTUME.—These two figures illustrate the same Pattern—Ladies' Costume No. 4431 (copyright), price 1s. 8d. or 40 cents. (For Descriptions see Pages 312 and 313.)

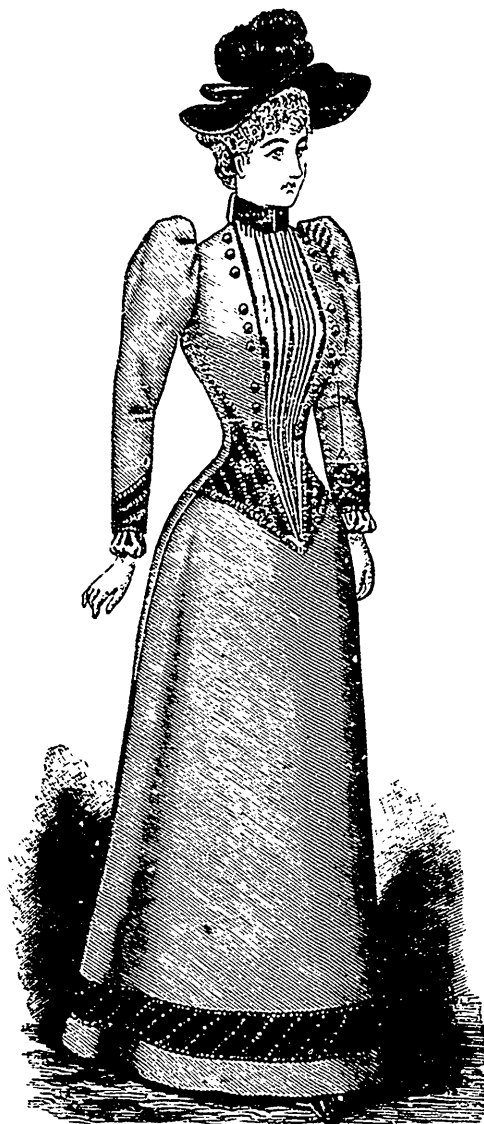


FIGURE No. 421 T.

basque. The skirt pattern, which is No. 4409 and costs 1s. 6d. or 35 cents, is in nine sizes for ladies from twenty to thirty-six inches, waist measure, and is shown in three views on page 335 of this publication. The basque pattern, which is No. 4411 and costs 1s. 3d. or 30 cents, is in thirteen sizes for ladies from twenty-eight to forty-six inches, bust measure, and may be seen in two views on page 330.

In the present instance the toilette is represented made up for mourning wear in black Henrietta cloth and black crape, and crape rosettes and Kurbiedt's Standard knotted cord gimp supply the decoration. The bell skirt is made with a slight train, which, if undesirable, may be cut off, the pattern also providing for a skirt of round length. The skirt is arranged at the back in backward-turning plaits at each side of the center seam joining the bias back edges. The front is fashionably smooth; it meets the back for a short distance at each side about midway to the bottom of the skirt, and above and below the meeting the edges flare to reveal a panel of crape applied to the foundation skirt at each side. The free edges of the skirt are decorated with knotted cord gimp, and two full rosettes of crape ornament each side.