

John Bale, Sons & Danielsson, Ltd.,

Printers and Publishers of
Medical & Scientific Work,

are prepared to
CONSIDER THE PUBLICATION OF MSS.
on the most favourable terms to the Author. They hold an

UNIQUE POSITION

for effecting a considerable saving in time, labour, and expense, in that the work is all carried out under their personal supervision, and

EXECUTED ON THE PREMISES.

THE VARIOUS DEPARTMENTS COMPRISE :

Letterpress Printing,
Lithographic Printing,
Illustrations by Line and
Half-tone Process,
Drawings on Stone,
Photography,
Bookbinding,
Publishing.

We hold a large and varied stock of Charts, Clinical
Figures, Diagrams; also Medical and Dental Card
Index Systems.

CATALOGUE ON APPLICATION.

83-91, GREAT TITCHFIELD STREET,
OXFORD STREET, LONDON, W. 1.

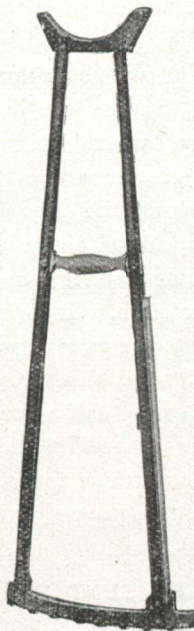
Telephone—
Museum 2077.

Telegraphic Address—
"Limitable, Wesdo, London."

The Weldon "Auto-Motive" Crutch.

(Pat. 105,185—1916)

FOR LOCOMOTION
WITHOUT EXERTION.



Owing to the unique construction of the base, the user is propelled by gravitation without any exertion beyond resting the weight of the body on the handles.

In proceeding down hill it is only necessary to reverse the crutches, which then act as a natural brake.

But the feature of the "Weldon Auto-motive" is the anatomically correct position of the head, which conforms to the oblique direction of the axilla.

At the same time the segmental bases are parallel to each other and to the line of progression. Thus all risk of "crutch paralysis" is entirely eliminated, there being no irritation of the brachial plexus, as is common to all crutches with parallel heads.

27/6 per pair. With Seat, 29/6.
Carriage and Packing Extra.

A most Instructive Booklet issued post free on request.

Sole Agents for the United Kingdom :

HOSPITALS & GENERAL CONTRACTS CO. Ltd.,
19-35, MORTIMER STREET, LONDON, W.1.

Phone—MUSEUM 3140-1.

Telegrams—"CONTRACTING, LONDON."

PROPHYLACTIC & THERAPEUTIC CATARRH VACCINES

The undermentioned Vaccines are prepared in the Inoculation Department of St. Mary's Hospital, London (Founder: Sir A. E. WRIGHT, M.D., &c.), and are supplied to the Medical Profession through the agency of PARKE, DAVIS & Co.

PROPHYLACTIC ANTI-CATARRH VACCINE

EACH C.C. CONTAINS :—		millions
millions	Staphylococcus	.. 500
Micrococcus catarrhalis .. 100	Bacillus septus (diphtheroid) .. 50	
B. pneumoniae (Friedländer) .. 100	Bacillus influenzae .. 300	
Pneumococcus .. 50	Parodontal Streptococcus .. 12	

This vaccine is adapted for the preventive inoculation of individuals who suffer from recurring "colds," in cases in which a complete bacteriological investigation is not convenient, and in cases where there is some general diminution in resistance, indicated by the patient becoming infected by any one of the several microbes which may cause these catarrhs. It is not intended to replace an autogenous vaccine in the case of patients who are subject to the periodic lighting up of a chronic infection by some one microbe.

Dose.—0.5 c.c. for the initial dose; 1 c.c. to be given fourteen days after the first dose, and subsequently at monthly intervals during the winter.

The above-mentioned Vaccines are supplied in bulbs of about 1 c.c., also in bottles of 10 and 25 c.c.

THERAPEUTIC MIXED VACCINE FOR COLDS

EACH C.C. CONTAINS :—		millions
millions	Staphylococcus	.. 300
Micrococcus catarrhalis .. 30	Bacillus septus (diphtheroid) .. 50	
B. pneumoniae (Friedländer) .. 50	Bacillus influenzae .. 300	
Pneumococcus .. 50	Parodontal Streptococcus .. 12	

This vaccine is applicable as a means of cutting short the course of a common "cold" by evoking an immediate and adequate immunising response in the early stage of the infection. In order to be suitable for use in cases in which no bacteriological examination has been made, the vaccine is prepared from the several microbic species which are most commonly responsible for acute coryza and "colds," and it has appeared to do useful service in such cases.

Dose.—In acute colds, 0.25 to 0.5 c.c.; in subacute, 0.75 to 1 c.c. The smaller doses may be repeated after 36 to 48 hours, if necessary; the larger after a slightly longer interval. Must be administered subcutaneously, not intramuscularly.

PARKE, DAVIS & Co., 50-54, Beak St., Regent St., LONDON, W. 1.

Send all enquiries for Dental Materials to

CLAUDIUS ASH, SONS & CO.,
LIMITED,

5-12, BROAD STREET,
GOLDEN SQUARE,
LONDON, W. 1.

ESTABLISHED 1820.

Telephone: No. 420 GERRARD.

Telegraphic Address: "FRENES, REG., LONDON."

TORONTO ADDRESS—

11-13, GRENVILLE STREET,
Toronto, CANADA.

H. K. LEWIS & Co. Ltd.

Medical Publishers & Booksellers,
COMPLETE STOCK OF TEXT-BOOKS AND RECENT
WORKS IN MEDICINE AND GENERAL SCIENCE.

MEDICAL & SCIENTIFIC CIRCULATING LIBRARY.

ANNUAL SUBSCRIPTION—FROM ONE GUINEA.

All the Latest Works are obtainable without delay.

136, GOWER ST., LONDON, W.C.
Telephone - - - - - MUSEUM 1072.