

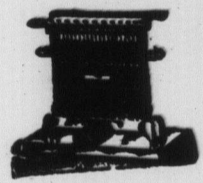
# MAGEE & CHARLTON

## HEADQUARTERS For CHRISTMAS SHOPPERS

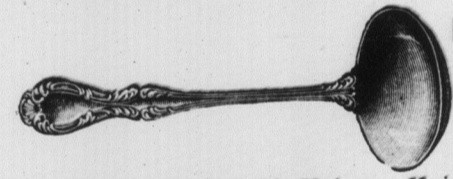
We have made a special effort this year to provide a stock of Christmas goods to suit everyone. We invite all to our store, to see for themselves our large and assorted stock of Silverware, Cut Glass, Fancy Goods, China, Leather Goods, Brassware, Pyrex and Wear-Ever Aluminum Cooking Ware, Electric Reading lamps, Toys, Dolls, Games, Skates, Sleds, etc.



Casseroles in Silver and Nickel Frames with Earthenware and Pyrex Inserts. \$4.00 to \$10.50.



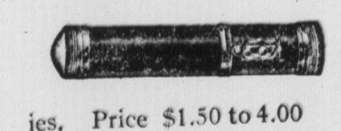
Electric Toasters and Heaters



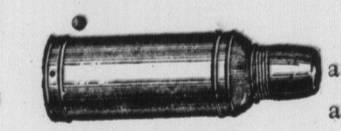
Silver Berry Spoons, Meat Forks, Gravy and Cream Laddles, Pie Knives, Knives and Forks, Spoons, Sugar Shells and Butter Knives.



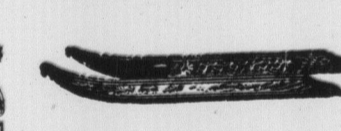
Jack Knives a complete line all sizes from 60 to \$3.50 each



A complete line of Daylo Flashlights and batteries. Price \$1.50 to 4.00



Thermos Bottles and Food Jars in pts. and qts. \$2. to \$7.25



Sleds and Frames all sizes and kinds. \$1. to \$6.

Percolators,

Tea and Coffee



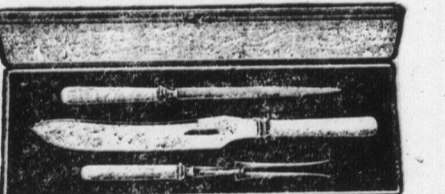
Pots.

\$2.00 to \$7.50

Electric Irons just

the thing

for mother.



Carving Sets in Stag and Ivory handles \$2. to \$9.

Watches, a Good Assortment

\$3.00 to \$8.75



Alarm Clocks from \$2.30 to 6.00

Mantel Clocks \$10.00



A full line of Skates



in all sizes .75c to \$6

# MAGEE & CHARLTON

Hardware, Paint, Oils, Glass, Stoves, Ranges, and Kitchen Furnishings.

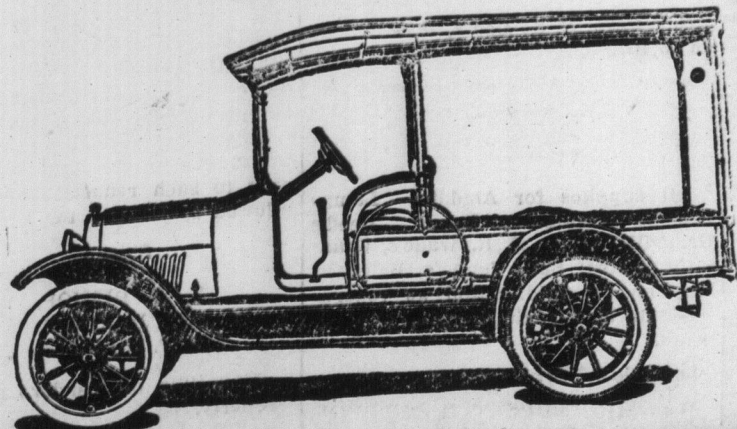
QUEEN ST.

BRIDGETOWN

Made in Canada

WE know the sale of the Chevrolet Light Delivery Wagon depends on the satisfaction it gives in actual service. We also know that its valve-in head motor eliminates fuel waste and delivers fullest power, that its ample bearings cut friction to a minimum, that its perfect balance—strength without weight—in-sures stability and makes a maximum of power available for actual hauling. These are only a few of the obvious reasons for Chevrolet ability, durability and economy.

COLONIAL MOTOR CO.  
RIDGETOWN, N. S.



# CHRISTMAS

Messinger's Grocery

This is the place to obtain your Christmas Supplies.

Raisins, Figs, Dates, Currants, Peels, Spices of all kinds, etc., etc.

Fancy China BRIDAL ROSE

Just the thing for Christmas Gifts. Something that is always appreciated.

B. N. MESSINGER  
Telephone No 78

# WINTER FEEDING OF YOUNG CATTLE

(Experimental Farms Note)  
There is no time that gain can be made more profitable with young stock than the period from 6 months to 2 years of age. The tendency very often, however, is to let the stock "rough" it during this time particularly during the winter, not even giving a maintenance ration, and the young stock too often passes the winter without having made any appreciable gain, the farmer depending upon the pasturing during the summer to put the animals into saleable condition. The result of such a practice is that lighter steers are obtained, or heifers are delayed in maturity with corresponding loss to the raiser. In order to carry stock to best advantage during the cold months, roots or succulent feed of some kind should be provided. Such feeds will take the place of hay and grains thereby lessening the cost of wintering, and at the same time make it possible for the animal to make the best use of such dry feeds because of aiding in the digestion of both the roughage and meal given.

Young stock cannot make gain without protein feeds of some kind. This may be supplied by feeding plenty of clover hay. The importance of using good clover hay for young stock cannot be too strongly urged. The practice too often is to feed the young stock the poorest hay, whereas the opposite should be the rule if best results are to be obtained.

Of the grains, wheat bran, crushed oats and oil meal are the best. These are mixed in the proportion of two parts each of the bran and oats to one part of the oil meal. It is risky to feed cottonseed to young stock particularly to those under one year of age.

With roots, or ensilage together with clover hay, a good growing ration is possible without grain feeds. In roots or ensilage, are available a poor quality of hay, or good straw may be fed along with some grain to furnish the protein requirements, and good growing conditions thereby maintained.

Good feeding is more important following the housing of the stock in the fall than at any other time. During the early winter is when particular attention should be given to the feeding of young stock, as in this time they respond more readily to good treatment and if any scrimping in feed is to be practiced let it be during latter part of the winter at which time stock seems to do with less feed than earlier in the winter when the days are shorter and the temperature lower.

The placing of young stock upon a dry ration after coming from the pasture in the fall is very likely to be attended with stomach troubles, and if the supply of succulent feed is limited let these be fed in moderation at this time to avoid too great a change in feed. A gradual change to the dry feed as the winter passes will prove to be less risky.

Care should be exercised in feeding a meal mixture, particularly if no succulent feeds are given, as very often a desire to bring on an unthrifty animal quickly may, if too heavy feeding is practised, result in increasing the unthrifty condition through impaired digestion.

At the Kentville Station five yearling heifers fed 30 pounds of roots, 8 pounds of hay and 3 pounds of meal as started above per day during November and December and no grain for the following five months made an average gain during this period of 225 pounds and an average gain for the year of 304 pounds.

Five fed the above ration during the seven months made an average gain of 276 pounds and a gain for the year of 350 pounds. It should be stated that the summer pastures were not what one would wish, but they were fairly average upland pastures.

The importance of well ventilated warm, well lighted stables with plenty of good water and opportunity for exercise, with dry quarters and plenty of bedding material should not be lost sight of in planning to make most profitable gains from young stock.

W. S. BLAIR, Superintendent, Experimental Station, Kentville, N. S.

SEVERAL BRIDGETOWN BIRDS

The Somerville wire department released a pigeon that was tangled in the telephone wires. There are a good many other birds that like to hang onto party lines too.

Developed along the lines of Business that it has played so important a part in Developing. It fits the ordinary needs of every Business. The Remington Typewriter.

A. MILNE FRASER, 157 Hollis St., Halifax, N. S.

Minard's Liniment Relieves Colds, Etc.

# Christmas Candies

Headquarters for

Fruits and Nuts

- |                     |                              |                      |
|---------------------|------------------------------|----------------------|
| Daisy Mixture       | Chocolate and Cream Mixture  | Fruit Jellies        |
| Ribbon Mixture      | Cream Bonbons                | Gum Drops            |
| Hard Boiled Mixture | Crystalized Cocoanut Squares | Cream Fudge          |
| Barley Toys         | Peppermint Creams            | Nut Fudge            |
| Molasses Kisses     | Scotch Mints                 | Choc. Peanut Cluster |
| Peanut Brittle      | After Dinner Mints           | Maple Buds           |
| Milk Chocolates     |                              | Cream Caramels       |
| French Creams       |                              | Milk Caramels        |

DeWolfe's Candies

Peanut Buttercups, Cocoanut Buttercups, Butter Creams, Molasses Pepp. Wafers, Molasses Chips, Lemon Drops, Chicken Bones and Peppermint Wafers.

Barley Candy and Buttercups in Glass Jars. Penny Candy of all kinds

NUTS. Walnuts, Almonds, Filberts, Brazils, Shelled Walnuts, Shelled Almonds, Fancy Jumbo Salted Peanuts, Fresh Roasted Jumbo Peanuts.

FRUITS. California Naval Oranges, Florida Grape Fruit, Florida Sweet Oranges, Lemons, Malaga (green) Grapes, Red Emperor Grapes.

FIGS. Very Choice Layers, also in small packages.

RAISINS. Extra Fancy Table in waxed paper, also seeded in packages.

CURRENTS. Choice packages, well cleaned.

DATES. Dromedary in packages.

MOTHER'S JELLY. in tumblers, Red Currant, Strawberry, Crabapple, Raspberry, Black Currant also Orange Marmalade.

LIBBY'S Plain and Stuffed Olives, Sweet and Sour Pickles, French Red Cherries in small Bottles.

Fancy Box Chocolates, prices from 10 cents to \$6.50. Largest and best assortment in town.

MOIR'S CAKE. Plain Pound, Xmas Fruit and Sultana

# W. H. MAXWELL

QUEEN STREET, PHONE 1-4, BRIDGETOWN, N. S.

# REDUCTION SALE

In carefully scanning the FOOTWEAR situation we find that SHOE manufacturers are and will be for some time to come, firm in their prices but jobbers and retailers are carrying heavy stocks and in some cases unnecessarily have become somewhat panicky, therefore we have decided to allow to cash purchasers for a short time, the following liberal cut prices:

REGULAR PRICE	SALE PRICE
\$12.00	\$10.00
10.00	8.75
10.75	9.00
9.00	8.00
8.00	SPECIAL 6.50
5.50	4.90
7.00	6.00
7.50	6.50
6.00	5.40
4.00	3.60
3.50	3.00

IN RUBBER GOODS

there is no decline but during this sale we will allow a discount of 5% on rubber goods.

# LLOYD'S SHOE STORE

Shoe Distributing Centre

NOT RESPONSIBLE

The new maid was a war time make shift, says the Manchester Guardian, and at first the mistress bore with her patiently. But on the third day she placed a very unclean dinner plate on the table, and patience broke down. "Really, Mary, you might at least see that the plates are clean." "Well, mum" Mary rejoined. "I owns to them thumb marks, but dried mustard was there also come."

Over 26 per cent of the weeklies and 18 per cent of the dailies in Ontario have ceased publication since the war began.

SHILOH 30 DROPS COUGHS

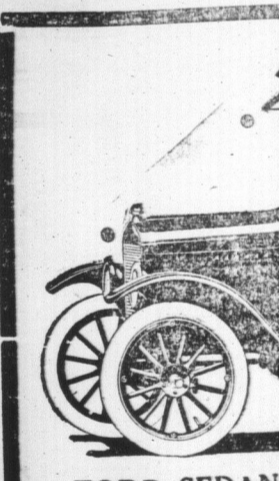
Minard's Liniment Relieves Colds, Etc.



# New A

Just the Th  
Combination  
" Ste  
Large Stock P  
Large  
C

A Special 3 Pie  
\$2.7  
You will find our  
KARL  
Christmas and B  
BR



FORD SEDAN  
PRICES—including  
\$1250, f. o. b. Ford. Ont.  
L. B. DO  
M

TODD'S  
STA  
Flo  
G R

Boston & Y  
Fre

FALL  
Leaves Yarmouth  
Return-Leaves B  
For statere  
Advertise