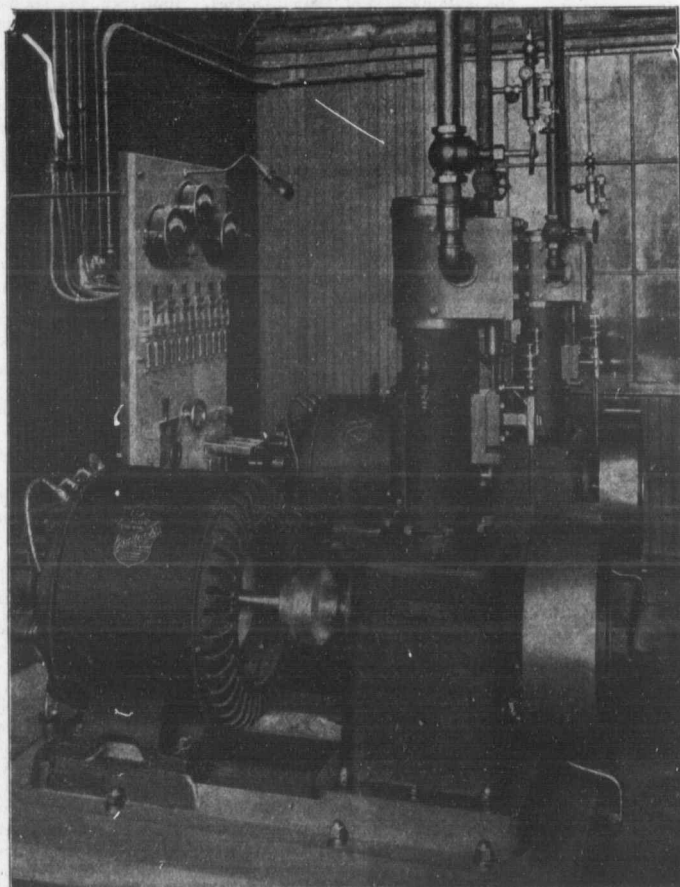


Electric Light Plants



Two of our 11 K.W. Generators and Auxilliary Apparatus, forming the lighting plant of Dow's Brewery, Montreal. The base of each set is only 57½ in. x 32 in.

"Allis" Mining, Saw Mill and Flour Mill Machinery, Engines, Pumps, Steam Turbines, Turbine Water Wheels.

"Bullock" Electric Apparatus.

"Ingersoll" Air Compressors, Coal Cutters and Rock Drills.

"Lidgerwood" Hoisting Engines.

ALLIS-CHALMERS-BULLOCK LIMITED

Head Office and Works: MONTREAL

District
Offices :

{ MONTREAL: Sovereign Bank Bldg.
NEW GLASGOW: N.S. Telephone Bldg.
WINNIPEG: 251 Notre Dame Ave.

TORONTO: Traders Bank Bldg.
NELSON: Josephine St.
VANCOUVER: 416 Seymour St.