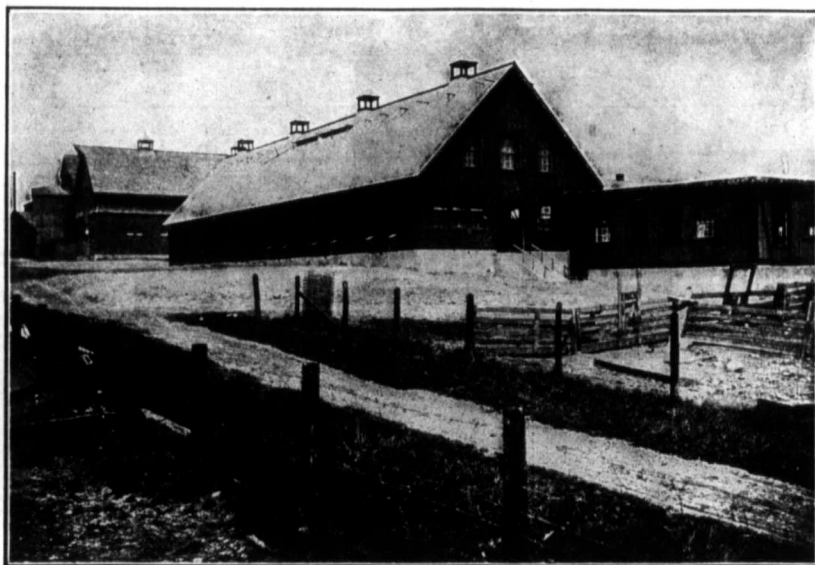


A MODERN PIGGERY.

During the year 1910, a large modern piggery was erected at the Central Experimental Farm. As a result of the foregoing experiment, the Rutherford system, as illustrated in pen 1, experiment No. 2, was adopted.

CONSTRUCTION OF VENTILATORS.

The fresh-air intake opens into the pens on either side of the central passage. Each intake is 9 inches by 18 inches and, being divided by the pen partition, gives



(Photo by F. T. Shutt)

View of main piggery, Central Experimental Farm, Ottawa.

NOTE.—(1) Light supplied to each pen ; (2) Fresh air intakes, one for each pair of pens ;
(3) Caps on roof for foul air outlets.

each pen a 9-inch by 9-inch intake. These intakes in pens were raised to a height of 3 feet in the farrowing pens, to cut off all possible draughts from litters, but left at a height of 1 foot in the feeding pens.

The foul-air outlets, 16 inches square, start at the ceiling of piggery and extend straight to the ventilator cap on roof, as seen in Plate VI.

This system is giving excellent satisfaction.