

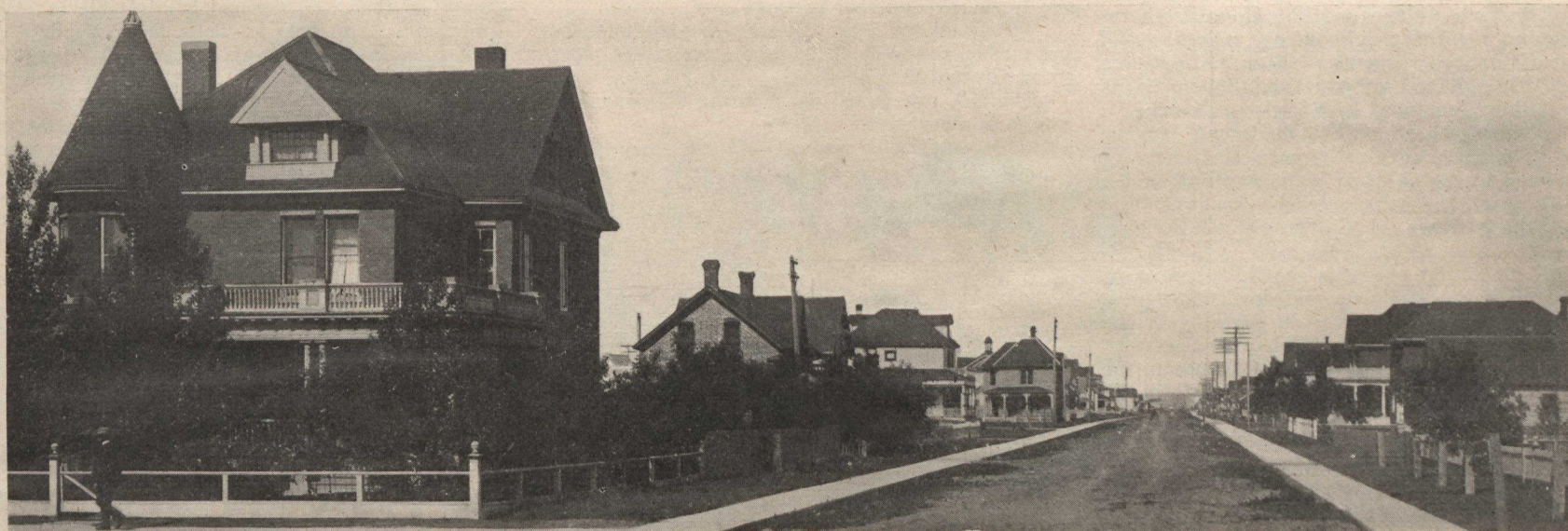
AN ENTERPRISING WESTERN TOWN



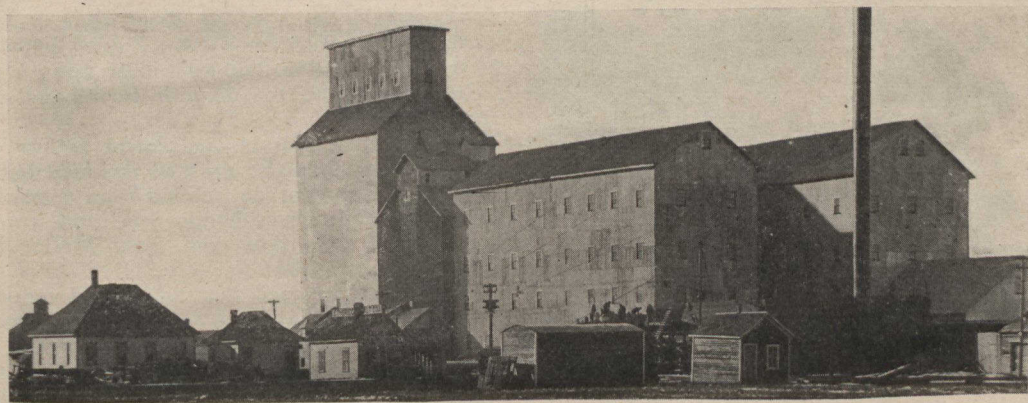
Canadian Pacific Railway Station, Moose Jaw, where the Soo Line and the Main Line meet.



Zion Methodist Church, Moose Jaw, completed last year at a cost of \$80,000



Stadacona Street, Moose Jaw. A typical view in a typical Prairie Town.



Saskatchewan Flour Mills at Moose Jaw. Erected in 1907.



Alexandra School, Moose Jaw.



Main Street, Moose Jaw, looking north from C.P.R. Station.

PHOTOGRAPHS BY LEWIS RICE

In 1902, the entire homestead entries in Western Canada amounted to only 14,673; in Moose Jaw alone, in 1908, the entries for homesteads or pre-emp-tions totalled 14,728. The other day Moose Jaw was merely a railway Junction, to-day it has 10,000 people; to-morrow it will have street cars and all the civic worries which properly belong to big cities. Every citizen is a booster.