

Industrial Railways.
 Steel Cars for Industrial Railways.
 Steel Tanks and Hoppers.
 Steel Casings.
 Clutches—Friction, Square and Spiral Jaw.
 Coal and Coke Crushers.
 Revolving Screens for Coal, Coke, Sand,
 Phosphate, etc.
 Coal Chutes and Gates.
 Angle, Charnel and Beam Work.
 Corrugated Iron Work.
 Weigh Boxes.
 Measuring and Mixing Machines.

Skip Hoists.
 Screw Conveyor.
 Renold Silent Chain.
 Power Transmissions.
 Retail and Wholesale Coal Pockets.
 Locomotive Coal, Ashes and Sand Stations.
 Vessel Loading and Unloading Machinery.
 Belt Conveyors.
 Coal and Ashes-Handling Machinery.
 Reciprocating Conveyors.
 Reciprocating Feeders.
 Chain.
 Elevators and Conveyors.

Sprocket and Traction Wheels.

The "Link-Belt" part of our name does not suggest the above list, but does lead you to infer that our business depends solely upon the genuine "Ewart" and perhaps some other chains, and that when building Elevating and Conveying Machinery we adhere strictly to Chain.

We wish to correct the wrong impression that our descriptive name gives, and so state —

First. —Chain represents the small end of our business.

Second. —We are every day estimating on and furnishing work in the above and kindred lines.

Third. —We have a thoroughly well equipped wrought and structural steel department.

Fourth. —There is no universal elevator or conveyor and we furnish that which best solves the problem presented.

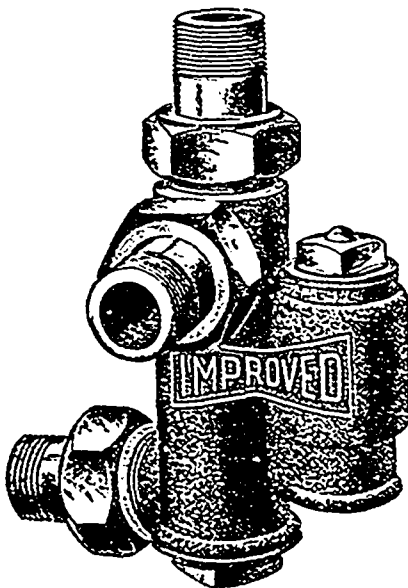
THE LINK-BELT ENGINEERING COMPANY

New York, 49 Dey Street.

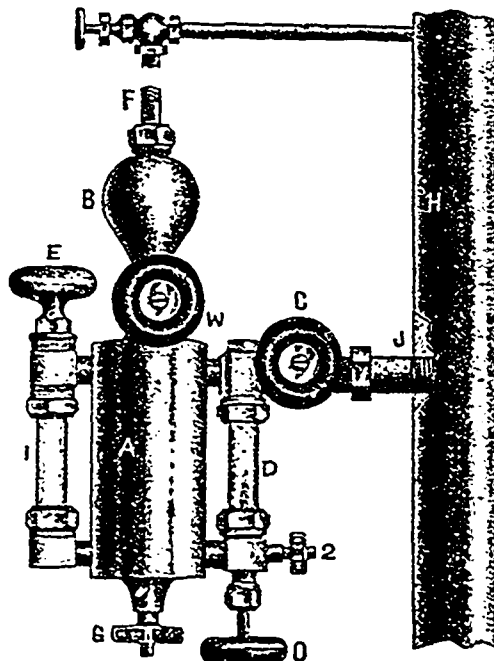
PHILADELPHIA.

Pittsburg, 1501 Park Building.

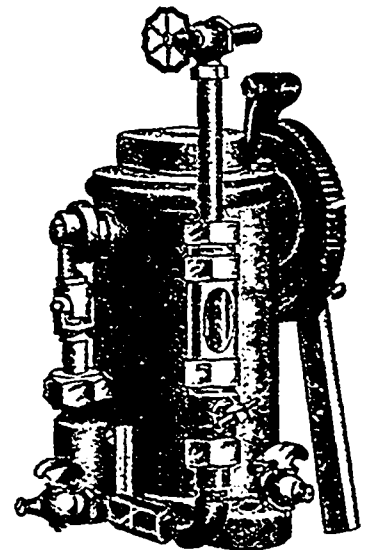
THE LINK-BELT MACHINERY COMPANY, Chicago.



IMPROVED T. J. C. INJECTOR
No. 2.



IMPROVED MICHIGAN LUBRICATOR.



THE IMPROVED HAMILTON
OIL PUMP

with and without Sight Feed.

THE HAMILTON BRASS MFG. CO., Limited

HAMILTON, - ONT.