

FOR THOSE WHO MUST COUNT THEIR EXPENDITURES

ALL ARTICLES ON THIS PAGE ARE 14K GOLD SET WITH REAL PEARLS AND OTHER STONES.

6000—\$4.00 6001—\$3.00 6002—\$2.25 6003—\$1.90 6004—\$3.00 6005—\$2.50
 6006—\$2.00 6007—\$1.50 6008—\$2.00 6009—\$2.75 6010—\$3.00 6011—\$2.00
 6012—\$1.00 6013—\$2.75 6014—\$2.50 6015—\$2.00 6016—\$2.40 6017—\$2.50
 6018—\$2.75 6019—\$2.00 6020—\$3.50 6021—\$4.25 6022—\$1.25 6023—\$2.25
 6024—\$3.50 6025—\$2.75 6026—\$3.00 6027—\$4.50 6028—\$3.75 6029—\$4.00
 6030—\$3.00 6031—\$3.00 6032—\$4.00 6033—\$3.00 6034—\$8.00 6035—\$5.00
 6036—\$3.00 6037—\$2.25 6038—\$3.50 6039—\$4.00 6040—\$4.00
 6041—\$4.00 6042—\$4.00 6043—\$4.00 6044—\$4.00 6045—\$4.00 6046—\$4.00 6047—\$4.00 6048—\$4.00

THERE is no time in the year that Tisdall's common-sense, small profit, low priced method of selling jewellery direct from factory to buyer is so important as it is right now during the Christmas buying. If money is no object to you it makes little difference where you buy; but if you must take care of your money, then we are here to help you intelligently and satisfactorily.

Of all Christmas gifts the well-chosen piece of jewellery enjoys pre-eminence and we are justly proud of our magnificent collection. You will find here, expressed in the greatest wealth of variety, the most enduring gifts in gold jewellery, mostly of our own manufacture. All are excellent in taste and our factory-to-pocket prices mean just one small profit between maker and wearer.

THIS STORE IS THE GIFT-SEEKERS ELDORADO.

It is wonderful the satisfactory way we serve the vast throngs that pour into our place daily. We have so intelligently planned our store arrangements and provided such an immense reserve stock that with our large staff of well-trained salespeople we can serve each day our many thousands of customers with much less crowding than many stores that do not serve a quarter the people. Make our store the headquarters for your jewellery purchases. We will give you better jewellery for the same money or the same jewellery for less money than elsewhere, depend upon it. Owing to our immense reserve stock you will find just as fine a variety to choose from as during the early days of our holiday rush.

Come early in the day or in the evening, thus avoiding the tremendous crowds that pack our store afternoons.

We Keep Open Every Evening

6136—\$3.00
 6138—\$3.00
 6139—\$3.00
 6140—\$3.00
 6141—\$4.50
 6142—\$5.00
 6143—\$5.00
 6144—\$5.00
 6145—\$5.00
 6146—\$5.00
 6147—\$5.00
 6148—\$5.00
 6149—\$5.00
 6150—\$5.00

TISDALL'S FACTORY-TO-POCKET JEWELLERY STORE

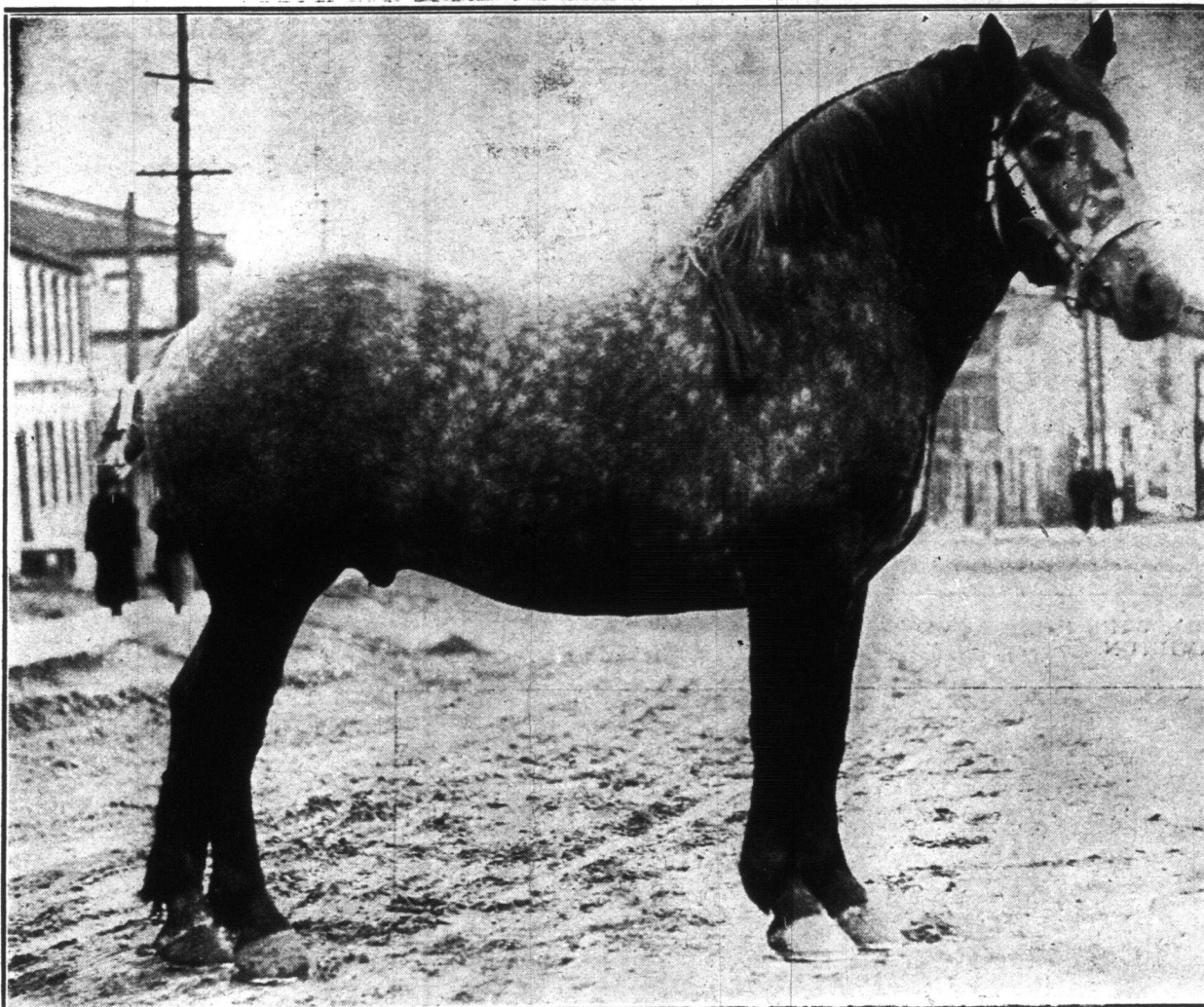
150 YONGE STREET, TORONTO

for him

Dollars worth of usefulness and comfort he will appreciate. EVERY PAIR GUARANTEED FOR ONE YEAR. Specially packed in handsome colored box for Christmas giving.

"EZE" SUSPENDERS

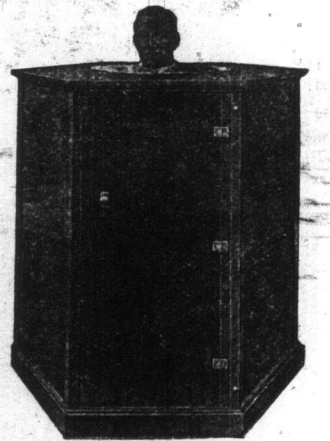
(PRONOUNCED EASY)
 50c. at your Dealers or sent postpaid anywhere for 50c.
 THE KING SUSPENDER CO. TORONTO, CAN.



"KABOULET," FIRST PRIZE TWO-YEAR-OLD PERCHERON COLT, WEIGHT 1840 LBS. IMPORTED FROM FRANCE BY J. B. HOGATE, WESTON. SHOWN AT THE GUELPH WINTER FAIR.

Battle Creek Electric Light Bath

In every way superior to the Turkish Bath—the radiant energy of Electric Light



Tones the Entire System

You can't be healthy unless you sweat. Sweating is the appointed business of the skin pores—to throw off the constantly accumulating body poisons. Exercise and sunlight stimulate the pores to do this necessary work. Lack of exercise and sunlight means failure to sweat and that means a body clogged with poisons. Sooner or later this clogging brings debility and disease.

Business men, busy women, don't get enough sunlight and exercise to cause thorough sweating. Science has proved that the very best substitute is the Electric Light Bath now established in Sanitariums and Hospitals the World over, used by the Royal families of Europe, and recommended by leading physicians everywhere.

To introduce this Modern Rejuvenator in Toronto a complimentary ticket for trial bath will be given, for the balance of the year, to every adult presenting calling card at

HIGH PARK SANITARIUM-TREATMENT PARLORS

Phone Main 2043 SUITE NO. 308, LUMSDEN BLDG.
 Hours—Women, 9 a.m. to 2 p.m. Men, 2 p.m. to 9 p.m., Daily.
 W. J. McCORMICK, M.D., Director.

SAMUELS' DUSTLESS ASH SIFTER

SAVES WORK SAVES COAL
 Patented Jan., 1912

is a saving in time, trouble and fuel. It soon pays for itself. No more need to carry ashes to the back yard or lane, standing in cold and dampness, getting your nose and throat filled with dust and your clothes ruined as with the old style sifter. The new sifter is absolutely dustless—it may be kept inside the house as the dust cannot leave the barrel, or if kept outside will not rust, as it is made of very best galvanized iron.

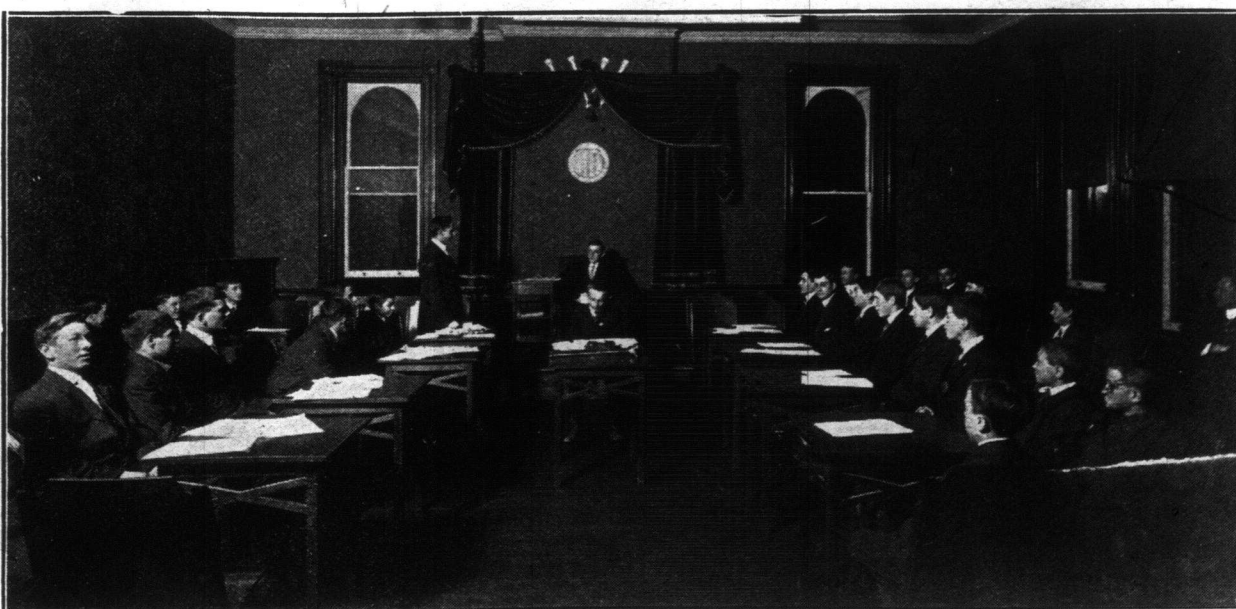
Sold at One Price - - - \$6.00
 For Sale by All Leading Hardware Dealers.
 MANUFACTURED ONLY BY
 J. SAMUELS, 279 QUEEN ST. WEST
 PHONE ADEL 1330. TORONTO, ONT.

Family Re-Unions

MAKE ARRANGEMENTS NOW FOR A SITTING CHRISTMAS DAY

Phone Main 5034 for appointment.

WALT. DICKSON Photographer
 238 QUEEN ST. EAST Near Sherbourne



PARLIAMENT OF BOYS' DOMINION CLUB, ON SHUTTER STREET.

WORK THIS PUZZLE! SEND NO MONEY!!

MON WANN PRIZE

\$50 CASH PRIZE

ALSO A PRIZE OF \$10 for NEAREST SOLUTION. Somebody who sends for particulars of this Puzzle Contest telling us WHAT TWO CITIES ARE REPRESENTED by the above Two Sketches, will receive a \$50 GOLD WATCH or \$50 IN GOLD MONEY! Try it at once. It may be you. Write the Names of the Cities in a letter or postcard, giving your Name and Address plainly.

DEPT. 3 DOMINION WATCH CO., MONTREAL, CANADA