

# Pumps

"FOR ALL DUTIES"

STEAM OR  
POWER

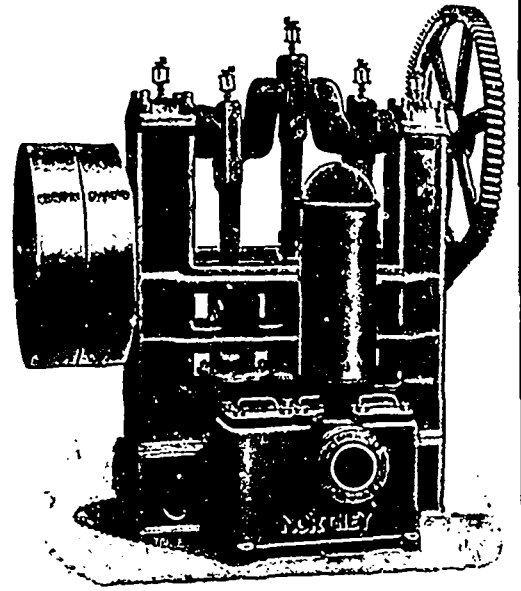
All Types and Sizes

The Laurentide Pulp Co., of Grand Mere, Que., one of the largest Pulp Mills on this Continent, use our

STUFF PUMPS, SUCTION PUMPS, BOILER FEEDS AND CENTRIFUGAL PUMPS

The same remarks apply to the Riordan Paper Mills Co., Hawkesbury, Ont., the E. B. Eddy Co., Hull, Que., and also to other extensive mills in Canada.

Send for Catalogue



TRIPLEX POWER PUMP.

## NORTHEY MFG. CO., Limited, Toronto

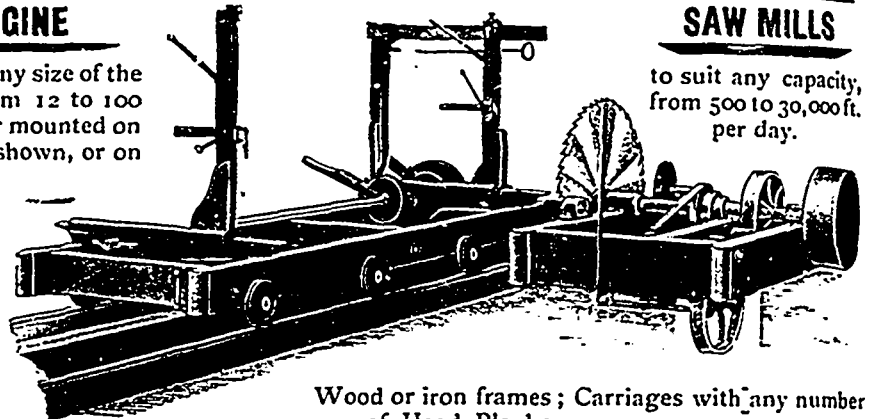
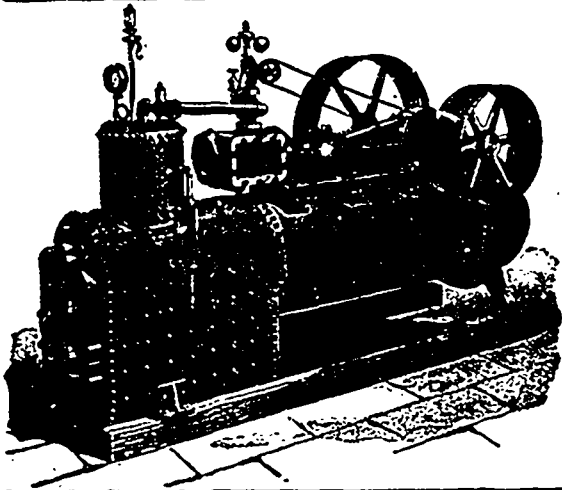
### PORTABLE ENGINE

We can furnish you any size of the above style Engine from 12 to 100 H.P., either on Skids or mounted on wheels with Engine as shown, or on separate Frame.

Also Engines, Boilers, Double Edgers, Trimmers, Top Saw Rigs, Log Jacks, Niggers, Shafting, Pulleys, Gears, Saws, etc. We can save you money. Let us quote you prices. Catalogues free.

### SAW MILLS

to suit any capacity, from 500 to 30,000 ft. per day.



Wood or iron frames; Carriages with any number of Head Blocks.

ROBT. BELL, JR., Box 35, HENSALL, ONT.

## DICK'S ORIGINAL BELTINGS

Enormous  
Transmission

No Seams or  
Joints



Not Affected  
by  
Dampness  
and No  
Stretching

SOLE AGENT: J. S. YOUNG

This is the Only Genuine and Original Balata Belt offered on the market.

15 Hospital Street  
MONTREAL

Try the "Wanted and For Sale" Department of the Weekly Edition.



# OAK TANNED BELTING

TORONTO  
20 FRONT ST EAST  
TELEPHONE 475

THE J.C. McLAREN BELTING CO MONTREAL