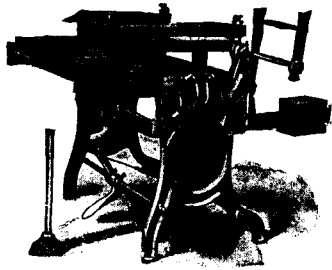


## Before You Buy Machinery or Equipment of Any Kind

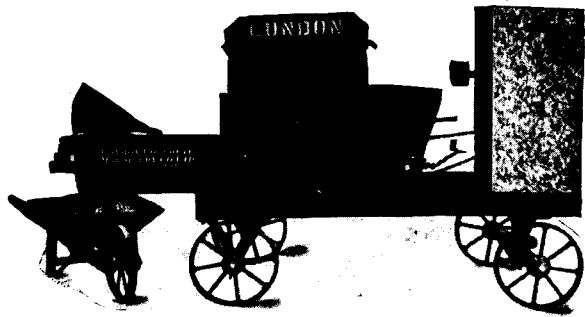


London Cement Brick Machine

Write to us  
For Our  
1912  
Catalogue

It will save you  
Time and Money

Do you know that we are the only large manufacturers who specialize on

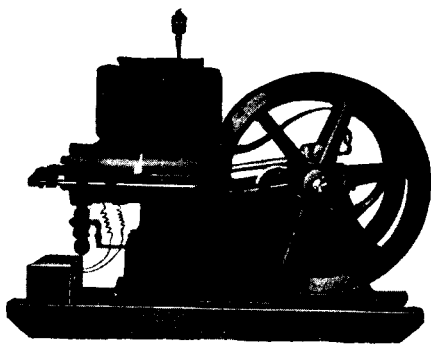


London Automatic Batch Mixer No. 1

## Concrete Machinery and Contractors' Equipment

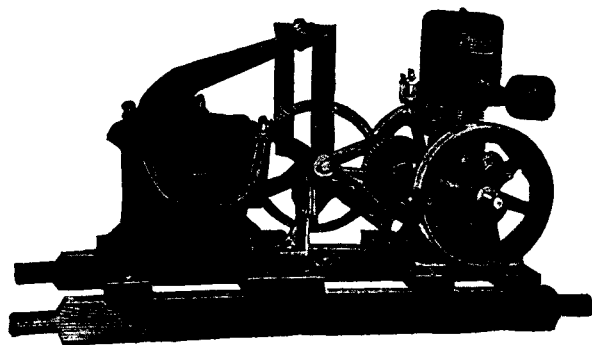
The following is a few of our lines:

London Standard Drum Batch Mixer, in five sizes, any kind of power or equipment. Drum Paving Mixer with forward loader and rear discharge.



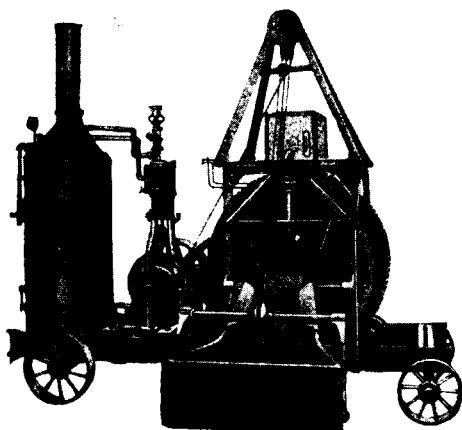
Standard Gasoline Engine

Drum  
Paving  
Mixer  
with side  
loader and  
rear  
discharge.  
Automatic Batch  
Mixer,  
two sizes,



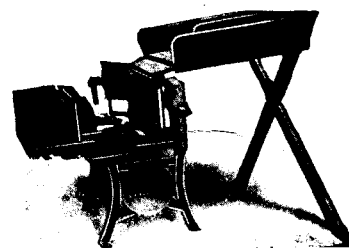
Power Operated Diaphragm Pump

any kind of power. Mortar Mixers. Hand Power Concrete Mixers. Tile Moulds. Ornamental Moulds. Rock Crusher. Screen and Elevators. Mason's Sand Screening Machine. Gasoline Engines. Sidewalk Forms. Material Elevators. Cement Block Machines. Drires, both portable and stationary. Cement Brick Machine. Cement Tile Machines. Sidewalk Tile Machines. Sill Step and Window Cap Moulds. Fence Post Moulds. Concrete Carts. Wheelbarrows.



London Standard Drum Batch Mixer

And a Complete  
Line of Cement  
Working Tools.



London Face Down Concrete Block Machine

# LONDON CONCRETE MACHINERY CO.

Cabell Street and Kitchener Avenue

LONDON, ONT.

AGENTS:—The Foss & Hill Machinery Co., 329 St. James St., Montreal, Que.  
G. B. Oland, 28 Bedford Row, Halifax, N. S.

THE LARGEST MANUFACTURERS OF CONCRETE MACHINERY IN CANADA.