

MUNICIPAL ENGINEERS, CONTRACTORS AND MATERIALS

WILLIS CHIPMAN

Hon. Grad. McGill University.
 M. Can. Soc. C.E. M. Am. Soc. C.E.
 Mem. Am. W.W. Ass'n.

WATERWORKS, SEWERAGE WORKS, GAS
 WORKS, ELECTRIC LIGHT AND
 POWER PLANTS
 Reports, Surveys, Construction, Valuations
 103 BAY STREET - TORONTO

R. E. SPEAKMAN, C.E.

A. M. Inst. C. E., 1878.

CONSULTING ENGINEER

Waterworks, Sewerage and Sewage Disposal.
 Municipal Improvements.
 Granolithic Pavements.
 Electric Light Plants.
 Drainage and Irrigation of Land.
 Coal Handling Plant and Machinery.
 Plans, Specifications and Estimates.
 Construction and Valuations.

Canada Life Building - TORONTO

Roderick J. Parke

Am. Can. Soc. C.E., A.M. Amer. Inst. E.E.

CONSULTING ENGINEER

Hydraulic Power Development. Long Distance
 Power Transmission. Steam Plants, Electric
 Lighting and Power Systems. Tests
 Valuations. Reports.

409-410 Temple Building, TORONTO, CANADA

Telephones { Office—Long Distance Main 2047
 { Residence—Long Distance North 2204
 Telegraphic address: "Rodparke."
 W. U. Code, Univ. Edition.

Wm. Mahlon Davis

Graduate R. M. College.
 M. Can. Soc. C. E. Ont. Land Surveyor.

CONSULTING ENGINEER

BERLIN, ONT.

Waterworks, Sewerage, Sewage Disposal,
 Drainage under The Municipal Act, Roadways.

W. G. McNeill Thompson**CONSULTING ENGINEER**

M. Inst. C. E. M. Can. Soc. C. E.
 M. Am. Soc. C. E.

Examination of Works, Reports, Water Power
 Development, &c., &c.

ST. CATHARINES, ONTARIO

ROSS & HOLGATE**Consulting and
Supervising Engineers**

Waterworks, Electric Light and Power
 Plants, Structural Work, Reports,
 Estimates, Arbitrations.

17 ST. JOHN ST. - MONTREAL
 MCKINNON BLDG. - TORONTO

Percival W. St. George

Mem. Inst. C. E. London, England.
 Mem. Can. Soc. C. E.

CONSULTING ENGINEER

Railway, Sewerage, Water, Hydraulic,
 Expert and Arbitrations, &c.

BELL TELEPHONE BLDG. MONTREAL
 Telephone, Main 4717.

JAMES C. KENNEDY

MEM. CAN. SOC. C.E.

Reports, Supervision, Con-
 struction, Dams, Water-
 Power Development, Water
 Works, Sewerage, Founda-
 tions, &c.

P. O. Box 710, OWEN SOUND, ONT.

Please mention THE CONTRACT RECORD
 when corresponding with advertisers.

**THE PHOENIX BRIDGE & IRON WORKS,
MONTREAL****GENERAL STEEL CONTRACTORS**

Large Stock I BEAMS, CHANNELS, ANGLES, TEES, ZEEs and
 PLATES always on hand.

Portland Cements...

HIGH GRADE GERMAN BRANDS FOR GRANOLITHIC
 AND ARTIFICIAL STONE SIDEWALKS.

Sewer Pipes, Best English Cements. Best Belgian Cements
 Culvert Pipes, &c. W. McNALLY & CO., Montreal

W. & F. P. CURRIE & CO.

345 St. James St., Montreal

Importers of

SEWER PIPES,

CULVERT PIPES, ETC.

VENT LININGS,

FLUE COVERS,

FIRE BRICKS,

FIRE CLAY,

WHITING.



PORTLAND CEMENTS,

HIGH GRADE ENGLISH

" " GERMAN

" " BELGIAN

PLASTER OF PARIS

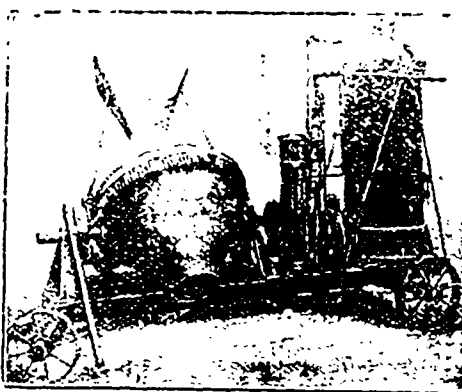
BORAX,

CHINA CLAY.

SMITH
 CONICAL
 CONCRETE
 MIXER

18

Different
 Sizes and
 Styles.



Mixes in Batches. Discharges by Tilting while
 Running. Mounted on Skids or Trucks.
 Catalogue on Application.

— SOLE CANADIAN AGENTS —

W. H. C. Mussen & Co., 763 Craig St.,
 MONTREAL

**CANADIAN
CONTRACTOR'S
HAND-BOOK**

and
 Estimator

Third Edition

Price \$1.50; to
 subscribers of
 the Canadian
 Architect and
 Builder, \$1.00.

SEND FOR A COPY

C. H. Mortimer
 Publishing Co.
 Toronto.

The KERR ENGINE COMPANY, Limited**PUMPING MACHINERY****HYDRANTS and VALVES**

Are our Specialty

Don't fail to write us for Catalogue and prices.

WALKERVILLE, - ONTARIO

