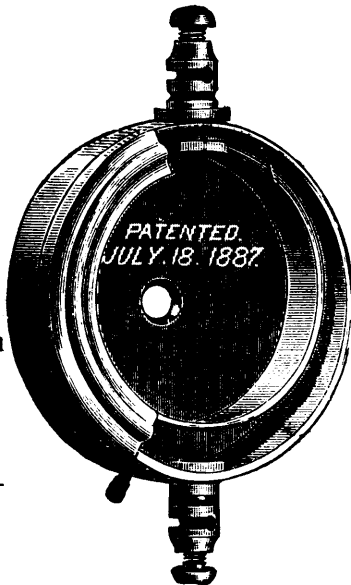


W. C. HIBBARD, MONTREAL,

MANUFACTURER OF



Campbell
Water-proof
Wires.
Annunciator
and
Office Wire.
Silk and Cotton
Covered
Magnet Wire.
Aerial and Sub-
marine Cables.

Superior
Water-proof
Tape.
Telephones.
Hotel & House
Annunciators.
Gas Lighting
Apparatus.
Burglar Alarms.

AUTOMATIC FIRE ALARM APPARATUS

And all Electrical Appliances and Supplies.

SAUNDERS' PATTERN WHEEL PIPE-CUTTER.



BUTTERFIELD & CO.,

ROCK ISLAND, P.Q.,

Desire to call the attention of their Customers and the Trade generally to this new improved **WHEEL PIPE-CUTTER**. We are confident that a thorough examination of the design, workmanship and general adaptability to the requirements of the Steam and Gas Fitter will be fully answered.

The following are some of the points wherein we claim this Cutter to be superior to any Wheel Cutter that has ever been offered to the trade:—

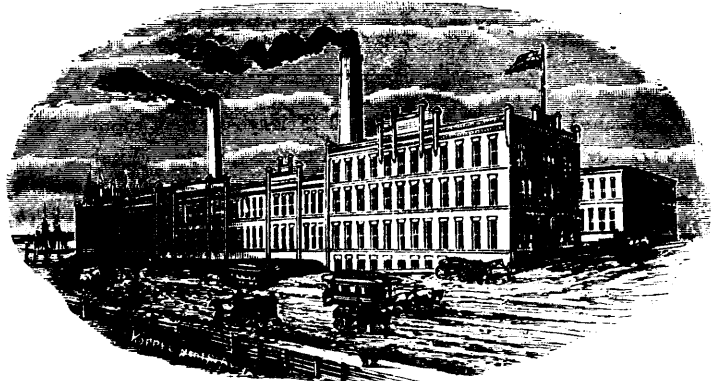
1. Its simplicity, strength, lightness, and the facility with which it can be adapted to the various sizes of pipe.
2. The body is provided with rollers for the pipe to rest on, producing a *rolling* instead of a *sliding* motion, thereby lessening the friction on the pipe. They also roll down the *bur* that is raised by the wheel in cutting the pipe.
3. The *hinged block* with the cutter wheel is so arranged that it will not become detached and mislaid; the wheel is held and moved to its work in a most substantial way, preventing the breaking of the wheel.
4. The handle is a hollow malleable iron casting riveted to the rod and not liable to come off in the ordinary usage.
5. All the wearing surfaces—rollers, pins and wheel—are made of the best tool steel and hardened, thus increasing the durability and lessening the friction to the least possible amount.
6. Pipe, one inch and larger, can be cut off in one-third less time than with the ordinary pipe cutter.

All its parts can be duplicated.
Messrs. Butterfield & Co. will mail illustrated catalogue of labor-saving tools to any address.

[1]



DOMINION TIN AND STAMPING WORKS



Plain, Stamped and Japanned Tinware,
Copper Goods,
Star Patent Stove Pipe Thimbles,
Stove Boards, Wire Goods,
Machine Oilers, Coal Hods,
Fire Shovels, House-furnishing Goods.

SPECIALTIES—Spice Tins, Mustard Tins, Baking Powder Tins, Blacking Boxes, Paint Irons, Lye Cans, Grocers' Canisters, Square and Round Oil Cans, Oil Tanks, Patent Butter Tubs (Tin Lined).

KEMP MANUFACTURING CO'Y

Cor. Gerrard & River Sts., Toronto.

Balcony Fire Escapes

(BATTEN'S PATENT)

ADVANTAGES:

The advantages of the BATTEN FIRE ESCAPE over all others are:

That the balconies are made of the best wrought iron, of any ornamental design or pattern, and securely bolted through the walls. Can be made any length or width. The brackets and flooring are capable of bearing any number of persons standing on them. The ladders, with wide steps and of easy grade, can remain down permanently, or folded up, as desired, showing the ornamental balcony only in sight, which does not mar the architectural beauty of the building, and can be instantly released when desired. No ice or snow will remain on them, neither will the working parts rust; and they will work admirably in any weather.

A Stand Pipe is also connected for high buildings, with valves at each door and on the roof.

Our Escapes have been fully tested at fires and proved themselves invaluable for saving life and property. Iron guards on windows of Asylums and Reform Schools can be so adjusted as to be instantly released in the case of fire by the unfolding of ladder or sounding of a gong.

Straight Iron Ladders.

For situations not requiring a Balcony Fire Escape I can quote reasonable prices for strong and well finished **STRAIGHT IRON LADDERS**.

FREDERIC NICHOLLS,

Sole Manufacturer for Canada,

The Permanent Exhibition of Manufactures

63 to 69 Front St. West, TORONTO.