

C H E S S .

(To Correspondents.)

G. A.—Always avoid playing a piece to a square where it impedes or confines the movement of another. In the position sent, your move was a bad one, inasmuch as your Bishop is now completely locked up.

CAROLUS.—1. Of course a King and Rook against a King can force checkmate. 2. You can have two or more Queens on the board at the same time.

GAEL, Hamilton.—See note to Solution.

BETTY MARTIN.—If Black on third move played K to Q 4th, as you have it in your Solution, White could mate next move.

Solutions to Problem 5, by E. S., of Hamilton, an Amateur of Guelph, J. H. R., and Esse are correct; all others are wrong.

Solutions to Enigmas in our last by Cloverfield, E. S., of Hamilton, J. H. R., Pawn, and Amy are correct.

SOLUTION TO PROBLEM NO. V.

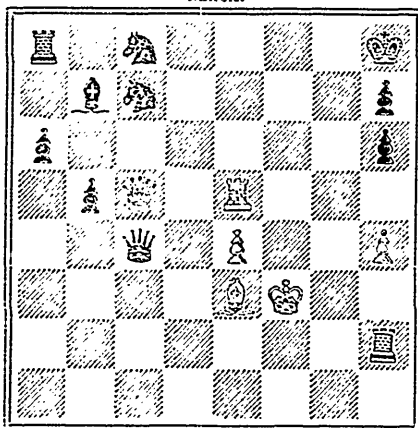
- | | |
|--|------------------|
| WHITE. | BLACK. |
| 1 Kt to Q R 6th. | Kt to Q 2nd (ch) |
| 2 P takes Kt. | R takes Kt (ch) |
| 3 P tks. R becomes Kt(a) Q to K B 5th (best) | |
| 4 Q to R 5 (ch) | Anything. |
| 5 Q mates. | |

(a) If P becomes a Queen, mate cannot be effected in two moves if Black play B to K 2nd.

PROBLEM NO. VI.

By J. B. C., of Toronto.

BLACK.



WHITE.

White to play and mate in four moves.

ENIGMAS.

No. 23. By the Editor.*

WHITE.—K at his Kt 4th; Q at her Kt 4th; B at Q R 4th; Ps at K R 4th, K B 4th and Q B 4th.

BLACK.—K at his 5th; P at Q 5th.

White to play and mate in three moves.

* Published originally in the "ILLUSTRATED LONDON NEWS," Enig. 511.

No. 24. From the "Berlin Schachzeitung."

WHITE.—K at Q Kt 4th; Q at her B 7th; R at K 8; B at K Kt sq; Kt at Q 4th.

BLACK.—K at Q R 3rd; Q at K R 2nd; Rs at K Kt 7th and Q 7th; B at K Kt 4th, Ps at K B 2nd, Q B 5th, and Q R 5th.

White to play and mate in three moves.

No. 25. From Staunton's "Chess Player's Chronicle."

WHITE.—K at Q Kt 4th; R at Q Kt 6th; B at Q B 5th; Ps at K Kt 4th, K B 3rd and Q Kt 2nd.

BLACK.—K at his 4th; P at K B 5th.

White to play and mate in five moves.

THE CHESS TOURNAMENT.

This contest has since we last wrote been brought to a close, and the reader will find in the present number four out of the five games played in the concluding division. We subjoin the complete score of the several matches contested in the Tourney.

FIRST SERIES.

(In this and the next division, each match consisted of the best of five games.)

	Games won.	Games drawn.
Dr. Beaumont	3	
Mr. Maddison	1	
Hon. W. Cayley	3	
Mr. F. Cayley	1	
Mr. Leith	1	
Mr. Ransom	3	
Mr. Palmer	3	
Mr. Helliwell	1	

SECOND SERIES.

Mr. Palmer	3	
Mr. Ransom	1	1
Hon. W. Cayley	1	
Dr. Beaumont	3	

THIRD SERIES.

(This, the final match, consisted of the best of seven games.)

Mr. Palmer	4	1
Dr. Beaumont	0	1

The prize, a handsome set of ivory "Staunton Chessmen," was therefore gained by Mr. G. Palmer, the winner of a majority of games in each division. It is right to mention that the best player in Toronto (the President of the Toronto Chess Club) and one or two other strong players, were not in the lists. We regret that a second Tournament to which we alluded in our last as being likely to follow up that just terminated, and which was to have included all the best players here, will not now, in all probability, take place before next winter.