

Solved Riddle

as Ever Today,
Particularly Shoes,
In Price.

insistent and intensely
nature—and its solution is
pire in this great war.
ade rubber on the forests of
upply increased slowly, if at
motor car, has grown enor-
08, the price jumped to \$3.00
doubt you remember what
looked alarming.

edoubled in vigor. German
seemed to expect them to
manufacturing rubber from its
at a low cost. But the world
his indignation over Britain's
rail.

from the far-sighted develop-
for years, in spite of general
plantation rubber on a large
states. Money was advanced
year period before the trees
of acres were planted.

antations produced 8,200 tons
aw 14,000 tons of plantation
in 1913 to 44%—in 1914
This year's production is
supply.

tion thus controlled by Great
fleet, the Allies are assured
the Teutons' troubles from

ly, and the power to impose
de it, except to her enemies,
of crude rubber lower than it

because the climate makes
shoe prices are soaring, while
ny to protect expensive shoes
at every sign of bad weather.
shoes so protected will wear
ral times over. Besides the
ion to health. Wet feet and
of ills—easily avoided by

ities of leather are absolutely
ing. Every pair of shoes we
the Empire to which we owe

ve the Empire!

ers

Try It
Before You
Buy It!

drink of
isky free
yourself
and finest
all intro-
send you
a trial
ment)
of whisky,
one first.
cribed, or if for any reason you don't like it,
collect, and we will refund you the full price—
You're to be the judge and your decision

ge and one trial bottle \$1.50
cial Selected" Rye Whisky
ge bottles Corby's "Special
lected" Rye Whisky \$5.00
e bottle Corby's "Majestic"
Rye Whisky \$1.25
ge bottles Corby's
"Majestic" Rye Whisky \$4.00

ey are received by Express, charges prepaid

our distillery at Corbyville, Ontario, where we
st 57 years. Our plant, with a capacity of 17,000
dia and is also recognized as the most modern and
under government supervision, and guarantee our
with all the requirements of the law.

mined by Dr. Milton Hersey, consulting
ent, and found to be pure and of excellent
mended for medicinal purposes.

on Case Lots
Special Selected Rye Whisky - \$10.50
Majestic Rye Whisky - \$ 8.00
on. Write us for price list on jars and kegs.

S
ess clearly and state which of the above orders
points East of Detroit or Lake Huron, and are
made from Montreal only.

, Limited,
ntreal, Que.

ver Half a Century

ance Beverages

Eronmiller's Ginger Ale, Schwepp's Gin-
Unfermented Grape Juice, Carling's Ale,

amilton & Co.
USIE STREET, BRANTFORD



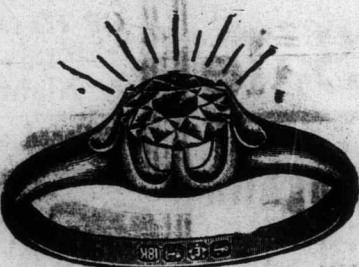
YOU MUST WORK

These Last Three Days Of This
Week. And You Must Have Sub-
scriptions by Saturday Night or You
Will be Out of the Race.

BIG CUT IN VOTES NEXT WEEK



On Exhibition at
BULLER BROS. and NEW-
MAN AND SONS' Jewelry
Stores.



You cannot afford to lose one minute now while the
larger votes are on, for if you do you will find instead of
winning one of the large prizes, that you will be numbered
among the small fish in the fry. Wake up you dreamers and
get busy now and not sit in your chair and dream how
nice it would be to win the Auto or any of the prizes.
Get right out this minute and make those dreams come
true that you have been pondering over so long. Results
this week or Bust.

Only Two Weeks More and the
Courier Contest Comes to a Close

Get Busy
Stay Busy

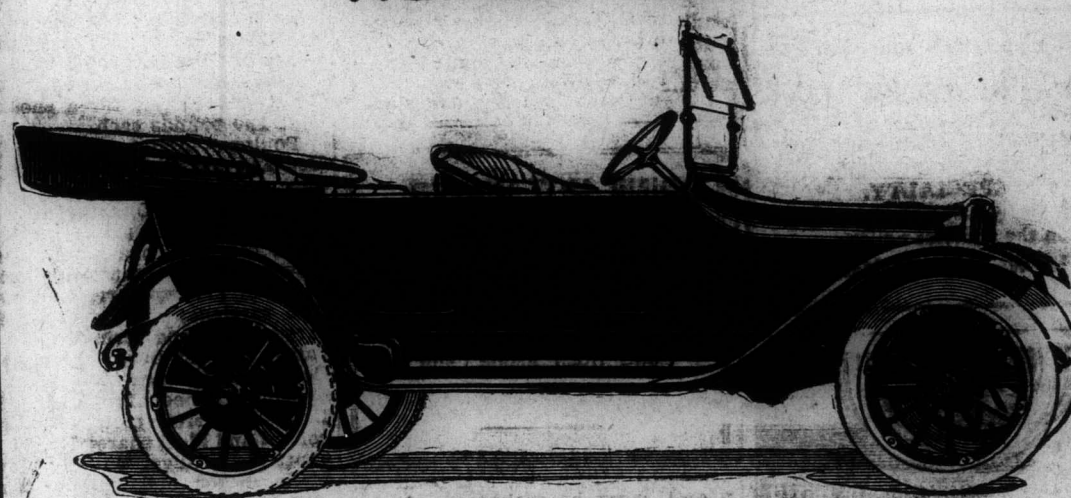


On Exhibition at
CHAS. BROWN'S and T. J.
BARTON AND SON'S Music
Stores.

THE GOOD MORN-
ING SMILE THAT
WE LIKE TO SEE ON
EVERY CANDI-
DATE'S FACE, AND
THE ONLY SMILE
THAT WILL HELP
YOU WIN IN THIS
RACE.



DODGE BROTHERS MOTOR CAR



Value \$1,115.00—On Exhibition at The Brant Motor Co. Garage.

Stop! Look!
Listen!

Safety First

Are You Getting
RESULTS
THIS WEEK?

VOTES THIS WEEK---6 months, 12,500; 12 months, 32,500; 24 months, 110,000.
VOTES LAST OF CONTEST---6 months, 5,000; 12 months, 10,000; 24 months, 35,000.

Will It Pay You to Work Today as one year subscription today is
equal in votes to a two year subscription at the last of the campaign. Get busy!

FOR FURTHER PARTICULARS, ADDRESS:

The Contest Department, The Brantford Daily Courier

Open Evenings Until 8 p.m.

BRANTFORD, ONTARIO

Phone 139