

The "EVERITT"—Built by Tudhope of Orillia—is

Made in Canada

Saves you \$450
in Duty

2 Years' Guarantee

Biggest Car Value To-day at

\$1,450—Extra Tire Free

Tudhope Service
Protects You

After
You Buy

Made By a Firm With a Reputation

The name Tudhope has long stood in Canada for honesty and integrity. In their large, new, modern, completely equipped motor plant at Orillia, the same brains, energy and strength of purpose that have characterized 56 years of Tudhope vehicle making is behind the Canadian-made "Everitt."

This will be a guarantee of reliability that will be appreciated by everyone who has ever tested any Tudhope claim.

The Aluminum Clutch Saves Transmission Wear

The "Everitt" adjustable clutch has a light aluminum body instead of a heavy iron body. Because this light clutch can be spun around instantly by the transmission gears, to much higher speed, when dropping from the "high" to low, (the clutch then being driven by the rear wheels through the transmission), there is no strain or breakages of gear teeth.

The gears are so protected against excessive strains by the aluminum clutch, that they wear perfectly, change without noise, are perfect and unchipped.

In braking stops, the light aluminum clutch stops quickly, not forcing the car forward by acting as a fly-wheel, straining the transmission gears.

The gradual taking up of motor speed by the bulged leather facing, starts the car gently, with the least strain on transmission gears.

This means long "Everitt" car service, with perfect gears.

An Extra-Strong Frame with Double Drop

The side units of the "Everitt" chassis frame are pressed steel in channel section, with extra wide 4-inch channel. This gives great strength, with light weight. The low body of the car is more graceful, better looking and easier to enter on account of the double-drop frame. You get the benefit in "Everitt" service and perfect comfort under all speed and road conditions.

Nickel-Steel Speed Gears that You cannot Injure

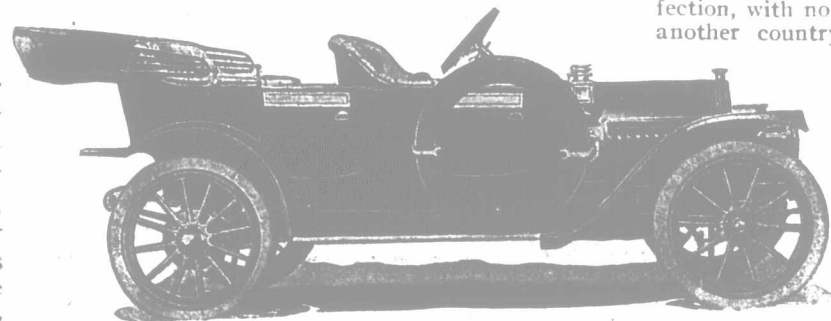
These gears are automatically cut from nickel-steel—the material armor plate is made from. The "Everitt" owner gets gears both wear-resisting and tough. They do not chip or break. Your "Everitt" gears keep in good condition, noiseless, slow-wearing. This is most important, as gears are subject to continuous work. "Everitt" gears are built for life-long service.

Canadian Making Means Preferability

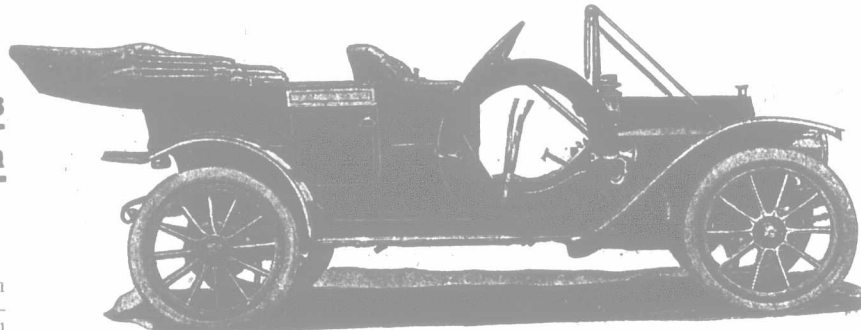
The "Everitt" must be right as a car, as perfect as possible in every detail. The manufacturers cannot evade responsibility by distance from the consumer, by customs and exportation trade barriers, by having a tremendous market to draw on.

For the Canadian, the Canadian-made "Everitt" is the most practical car purchase he can make. It is made by the well-known and responsible Tudhope firm, within his reach, who are vitally interested in satisfying his needs by car service, wear, and perfection, with no alternative market in another country. The car *must* be right. This preferability extends also to replacements under the guarantee or repairs. There is no slow and distant shipment of parts, no customs formalities, nothing but a quick transaction of the business needed and a direct shipment of the part replaced.

The "Everitt" is easier to care for than any other car, is lighter yet stronger built, has bigger wheels and higher clearance than other \$1,450 cars. It is safer owing to the strong, double-drop frame, which saves tire wear, gives a low car body, yet keeps the car high above snags in the road. The "Everitt" has with it the "Special Tudhope Equipment" of extra tire, etc.—the most liberal in the world.



"EVERITT" FORE-DOOR TOURING 1911 MODEL, \$50 EXTRA (at Orillia)



"EVERITT" STANDARD TOURING 1911 MODEL, \$1,450 (at Orillia)

Get the "Everitt" for your family. It will last for years, be easy to run, save its cost by saving time. In a few minutes, day or night, you can get to town 15 or 20 miles away with your "Everitt" for a doctor, implement parts, etc. You can keep in touch with markets and take advantage of turns on the market. You can go anywhere for 50 miles around in a couple of hours. The "Everitt" is the farm car. See it in detail in the big illustrated catalogue. Sent on request.

782 'Jigs' Make the "Everitt" Right

A jig is a guide for a machine and a holder for a part being machined.

782 jigs are used to make "Everitt" parts, one jig for each part. The one jig makes scores of parts exactly alike by being used scores of times. The blank drop-forging held in the jig is worked on by machine after machine, and when that part is completed, the jig, with a new piece, carries its new blank forging through precisely the same series of machines. Therefore, every "Everitt" part of one kind is absolutely like every other part of that kind. The same jig being used, the tools are guided in exactly the same way in each blank forging.

This means standardization and 1-1000th of an inch accuracy.

Rigid Inspection Backs Up Careful Building

The guarantee of two years is made possible by the rigid inspection service on the "Everitt" during making.

The jig method of making not only saves making-time by permitting quicker work, but it means accurate construction.

This great cost-saving, minute adjustments by hand being avoided, is partly given back to the buyer in rigid and microscopic inspection of each part for flaws.

Every "Everitt" part has 5 to 50 inspections for flaws.

Every "Everitt" jig is checked again and again by gauges.

Parts with the least flaw are instantly thrown out, the "Everitt" jigs permit only automatic accuracy. Such rejected parts represent comparatively small cost. They would be too costly to discard if made accurately by old methods, and the manufacturer would "take a chance"—and hope his 60-day guarantee would be too short to let trouble develop.

In the "Everitt" defective parts are thrown out on the same basis that they are thrown out on parts of \$10,000 cars.

The inspection service in rigidity and frequency is a \$10,000-car service.

You get the benefit in the \$1,450 "Everitt."

Two Years' Guarantee—12 Times Longer Than Usual

Most makers guarantee their cars 60 days. Tudhopes guarantee the "Everitt" for 2 years because they know how well it is built and tested. You can trust it.

Send for the new illustrated Catalogue No. 7 —just off the press.

Tudhope Motor Sales Ltd.
168 King St. West - Toronto

Tudhope-Everitt Sales Co.
Peerless Garage:
344 Queen Street - Orillia

TUDHOPE
Motor Co., Limited
ORILLIA

Tudhope, Anderson & Co. Ltd.
Western Showrooms
Winnipeg, Calgary, Regina, Saskatoon

Carriage & Harness Supply Co.
LIMITED
208-210 McGill St., Montreal