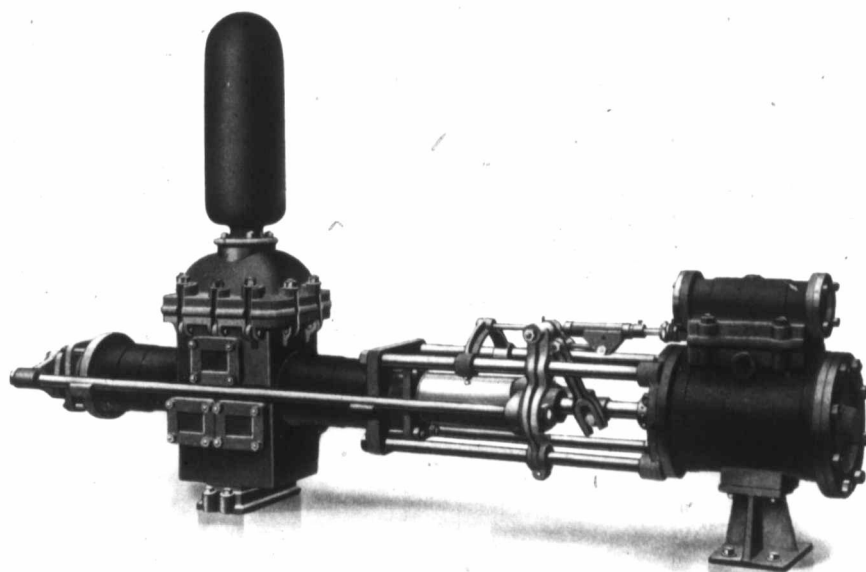


29-4 *Single and Duplex Steam Pumps.*

OUTSIDE END PACKED PATTERN.

## SINGLE PLUNGER PUMP.

FOR BOILER FEED OR PRESSURE SERVICE.

This pump is specially designed for high pressure, and is adapted for either hot or cold water. As the plungers only are exposed to the action of the water, the presence of mud or gritty substance has no effect upon the working parts, and the packing being outside in full view, any leaks can be instantly detected. The valve-seats and valve-studs are made of the best composition. Valves of composition or rubber are supplied as the service requires.

All the working parts of these pumps are made to gauge, and being *interchangeable*, duplicate parts can be quickly substituted when old parts are worn or broken. Special composition can be used for such parts as are liable to the corrosive action of chemically bad water at slightly increased cost.

## SIZES AND CAPACITIES:

Code Word.	Steam Cylinder.	Water Plungers.	Stroke.	Gallons per Stroke.	Capacity per Minute at Ordinary Speed.	Steam Pipe.	Exhaust Pipe.	Suction Pipe.	Delivery Pipe.	Floor Space Required.
Paacre.	4	2 $\frac{3}{8}$	5	.10	150 strokes, 15 gals.	$\frac{1}{2}$	$\frac{3}{4}$	1 $\frac{1}{4}$	1	55 x 8
Paacsen.	4 $\frac{1}{2}$	2 $\frac{3}{4}$	6	.15	150 strokes, 22 gals.	$\frac{1}{2}$	$\frac{3}{4}$	1 $\frac{1}{4}$	1	50 x 8
Paacsil.	5 $\frac{1}{2}$	3 $\frac{1}{4}$	7	.25	125 strokes, 31 gals.	$\frac{3}{4}$	1	1 $\frac{1}{2}$	1 $\frac{1}{4}$	68 x 11
Paacw.	6	3 $\frac{3}{4}$	7	.33	125 strokes, 42 gals.	$\frac{3}{4}$	1	2	1 $\frac{1}{2}$	68 x 11
Paaczer.	6 $\frac{1}{2}$	4 $\frac{1}{8}$	8	.46	125 strokes, 58 gals.	$\frac{3}{4}$	1 $\frac{1}{4}$	2 $\frac{1}{2}$	2	71 x 14
Paac.	7 $\frac{1}{4}$	4 $\frac{1}{2}$	10	.60	100 strokes, 60 gals.	1	1 $\frac{1}{2}$	2 $\frac{1}{2}$	2	90 x 14
Paacbl.	8	5	12	1.02	100 strokes, 102 gals.	1	1 $\frac{1}{2}$	3 $\frac{1}{2}$	3	121 x 14
Paacced.	10	6	12	1.47	100 strokes, 147 gals.	1 $\frac{1}{2}$	2	3 $\frac{1}{2}$	3	134 x 17
Paage.	12	7	12	2.00	100 strokes, 200 gals.	1 $\frac{1}{2}$	2 $\frac{1}{2}$	5	4	135 x 19
Paaght.	14	8	12	2.61	100 strokes, 261 gals.	2	3	5	4	130 x 21
Paahb.	16	9	18	4.96	67 strokes, 332 gals.	2	3	8	6	