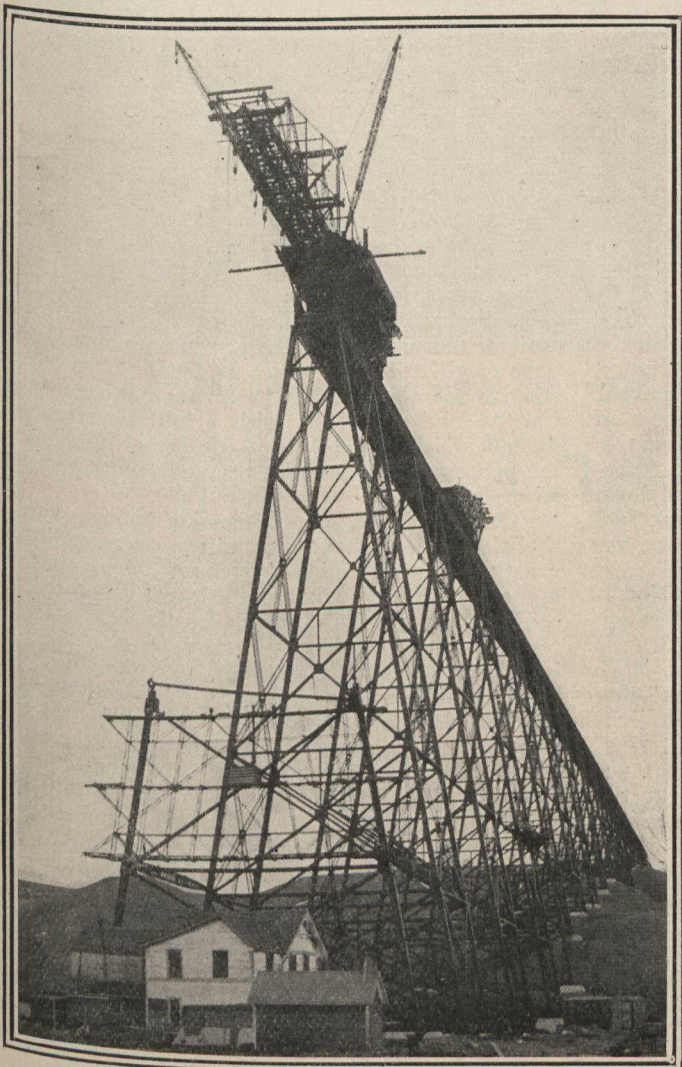
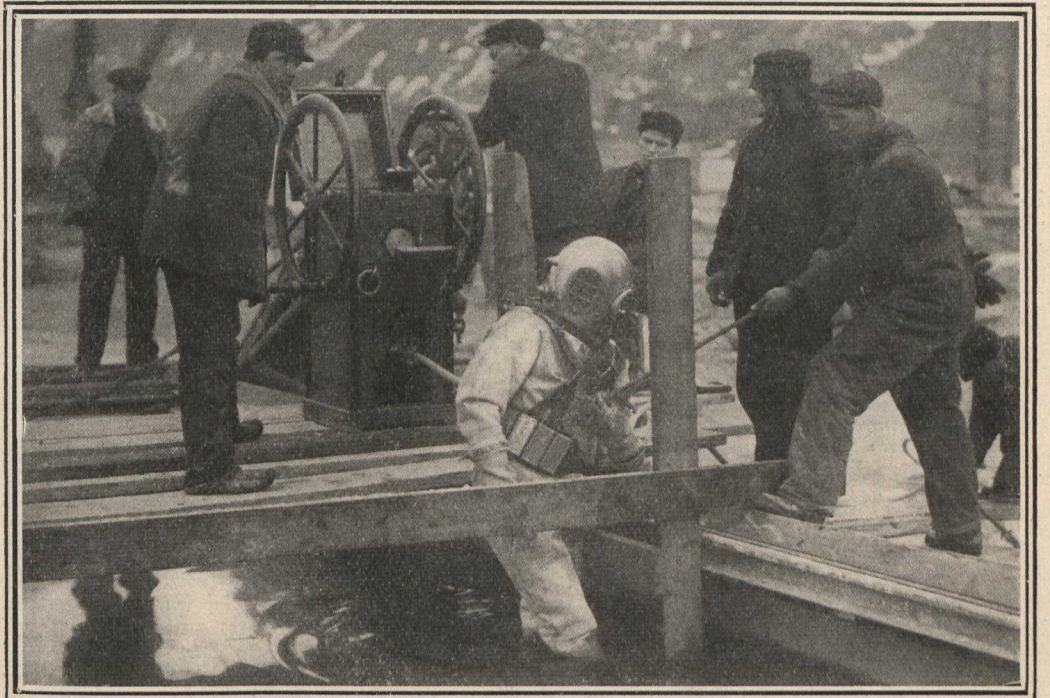




One of the largest Bridges in Canada now being built over the Belly River at Lethbridge, by the Canadian Pacific Railway.



Another View of the Belly River Bridge.



Divers at Work Examining the Bed of the River.

### A Huge Railway Bridge

THE *Courier* is indebted to Mr. John B. Robinson, of Lethbridge, for these excellent photographs of the new Canadian Pacific Railway Bridge at that point. The West is a prairie, but the river valleys are cut deep, necessitating long, high bridges.

This C.P.R. bridge is over the Belly River. The large photograph gives a very good view of the general work and the size of the bridge is well shown. The two arms of the crane which project from the top of the steel work

are the length of two flat cars, end on end. The river seems small but in the spring of 1908 during the flood time the whole valley was under water which rose to a height level with the centre of the white house seen at the base of the steel work.

The diving operations were necessary to find out whether there were any springs in the bottom of the river where the piers were to be built.

These pictures will indicate that the work of building railways over the great West is not the easy task which some people would have us believe.