

WOMEN'S FALL AND WINTER UNDERWEAR



LIGHTWEIGHT UNDERWEAR MADE OF FINE YARNS

There are many women who can't wear all wool underwear and yet who do not want all cotton. For this class we offer a line of underwear made specially for Eaton customers. It is our special lightweight NeatonU combination, made of fine yarns, wool and cotton mixture, firm, smooth weave and flat seams. White, sizes 32 to 42.

Order No. 19 G 162.

Special Price\$1.45

THERE IS A SHORTAGE IN THE MARKET AND THE EATON MAIL ORDER STOCK IS LIKELY TO BE RAPIDLY EXHAUSTED AS A RESULT

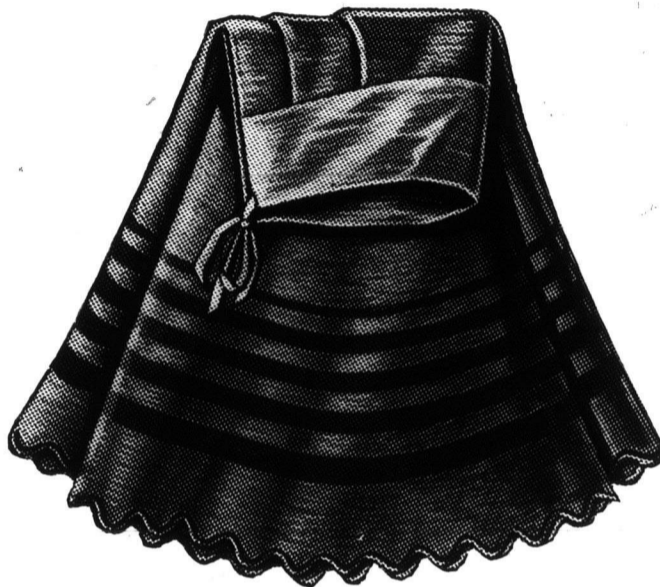
We are advertising women's underwear early because we want mail order customers to order early.

Despite the immense stock which we now have ready there are indications that it will be rapidly exhausted in the fall and winter rush.

You will do well to order now, thus ensuring the best selection and speediest delivery. There will be a great run on the lines featured in this ad. Better look them over and make a choice.

They comprise women's bloomers, women's lightweight combinations and women's stockinette undershirts.

For other lines of women's underwear, corsets, bust forms, waists, accessories, nightgowns, skirts, whitewear, aprons, garments and infants' outfits, see the new Eaton Fall and Winter Catalogue. If you have not already received a copy, write us and one will be sent free.



WOMEN'S STOCKINETTE UNDERSKIRT

An excellent undershirt at an extremely low price. Has heavy soft fleece lining, fits snugly, and is not bulky, has shaped yoke band, fancy striped border and scalloped edge. Material is durable and washes well. Suitable for elderly ladies. It is very warm and comfortable. Grey and fawn colors. Waist measurement 24 to 34. Length 37 inches. Excellent value.

Order No. 19 G 2013.

Price\$.75



WOMEN'S FLEECE LINED BLOOMERS

This is a very popular line in Western Canada, particularly for driving. Made of fleece-lined stockinette, knee length, shaped band at waist and knees, and have drop seat. Exceptionally warm and heavy, affording the greatest protection from cold. As this line is such a big seller, we have taken extra precaution to have it in stock. But take no chances and order early. Grey or black; small, medium and large sizes.

Order No. 19 G 170.

Price\$.75

Newest Materials in Fall Dress Goods and Satins

In this space we feature only our most popular lines. While we have a large stock the run will be heavy. Order early and avoid disappointment. The illustrations to the right and left merely typify popular styles. We have not these dresses in stock. Below are leading dress materials.



SHEPHERD'S CHECK

This is a good strong, serviceable fabric, nice even weave, having a clear black and white check. Always smart and dressy in appearance, guaranteed to give satisfaction. Correct weight for dresses, waists, and children's wear. Black and white only. Note the width of 50 inches.

Order No. 1 G 1.

Per yard\$.28

COLORED LINING SATIN

A full yard wide and represents a very elegant quality in linen back satin. Used for linings of all descriptions. Heavy in weight and made for wear. Face has rich satin weave produced from pure thread silk with a close linen back. Exceptional values in Grey, Navy, Brown, Black, Tan, Cream. 36 inches wide.

Order No. 38 G 18.

Per yard\$1.50

DUCHESS FACONE SILK

A high class novelty silk. Best Swiss manufacture, firm, soft texture, even weave and rich finish. Comes in neat Broche pattern. This is an ideal fabric for making up into reception gowns, party dresses and evening wear. Width is 40 inches. In colors Ivory, Saxe Blue, Navy, Brown, Old Rose, Grey, Cornflower, Cardinal, Black.

Order No. 38 G 19.

Per yard\$1.50

COLORED SURAH SILK

Beautifully soft and rich yet firm in texture. There is no weave of silk more popular today than Surah or serge silk. A fine twill weave runs diagonally across the goods and is woven from the purest of silk yarn. Correct weight for making up into the most stylish garments. Colors: Navy, Grey, Brown, Copenhagen, Ivory, Black. Forty inches wide.

Order No. 38 G 12.

Per yard\$1.50

SATIN ELEGANT

A beautiful soft lustrous pure silk fabric, made from the highest quality of Swiss silk yarn. Its fine construction speaks for unusual wearing

qualities, with body enough to it to make it suitable for all classes of silk garments. Comes in every fashionable shade such as Ivory, Cream, Pink, Sky, Maize, Champagne, Amethyst, Rose, Copenhagen, Reseda, Tan, Brown, Navy, Grey, Wine, Myrtle, Black. Note the width is 40 inches.

Order No. 38 G 1.

Per yard\$1.25

STRIPE TWEED SUITING

A special imported fabric made from a mixture of wool and cotton woven in a close firm weave, and having a smooth finish. An ideal cloth for fall and winter wear. Will give excellent service. In Navy, Brown, Green, Grey, Black. 40 inches wide.

Order No. 1 G 19.

Per yard\$.30

WOMEN'S WOOL CORDUROY SUITING

This handsome and serviceable material is made from pure wool worsted hard twisted yarn. Has a crisp texture, and will easily resist dust. It will give splendid service. Correct weight for street and house dresses. Colors: Navy, Cardinal, Myrtle, Grey, Brown, Black. 36 inches wide.

Order No. 1 G 13.

Per yard\$.30

CHARMEUSE SATIN

This pretty fabric has a very soft, rich satin finish. Will wear and make up charmingly. Nothing in its make-up but the finest grade of yarns. Positively all silk. An ideal fabric for developing into reception gowns, party dresses and evening gowns. Colors: Grey, Navy, Rose, Copenhagen, Tan, Black. Width 41 inches.

Order No. 38 G 15.

Per yard\$2.50



COLORED ARMURE

One of our prettiest and most serviceable lines in a low priced dress material. Will readily shed dust and withstand rough wear. Has close firm weave. Colors are Navy, Brown, Myrtle, Grey, Copenhagen, Old Rose, Amethyst, Black. 36 inches wide.

Order No. 1 G 4

Per yard\$.28

THE T. EATON CO LIMITED
WINNIPEG CANADA