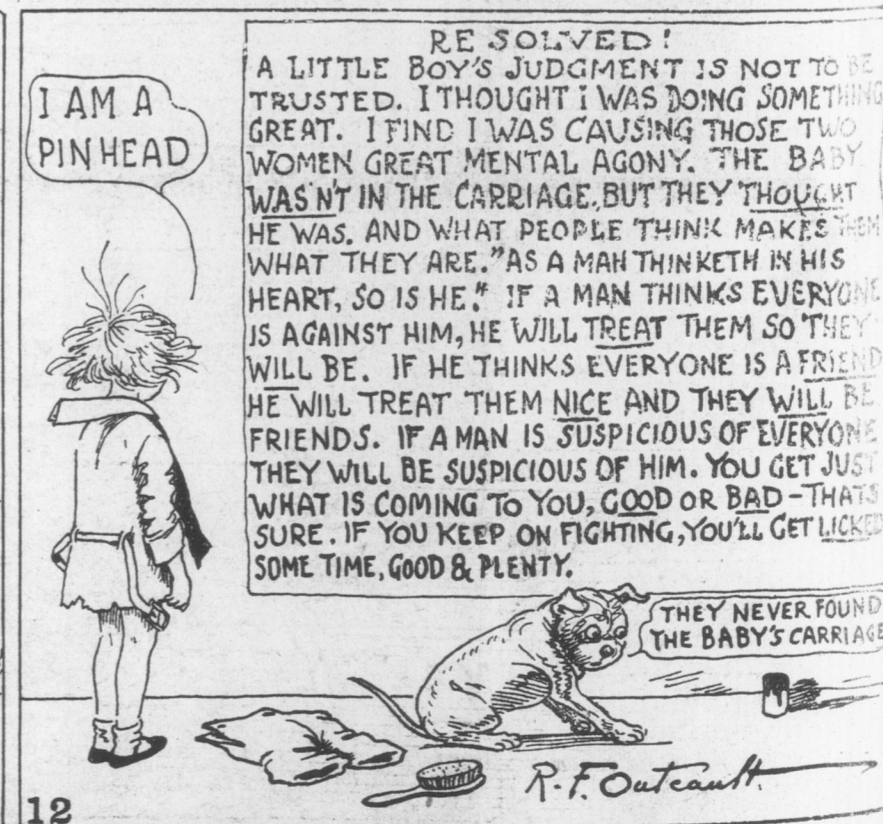
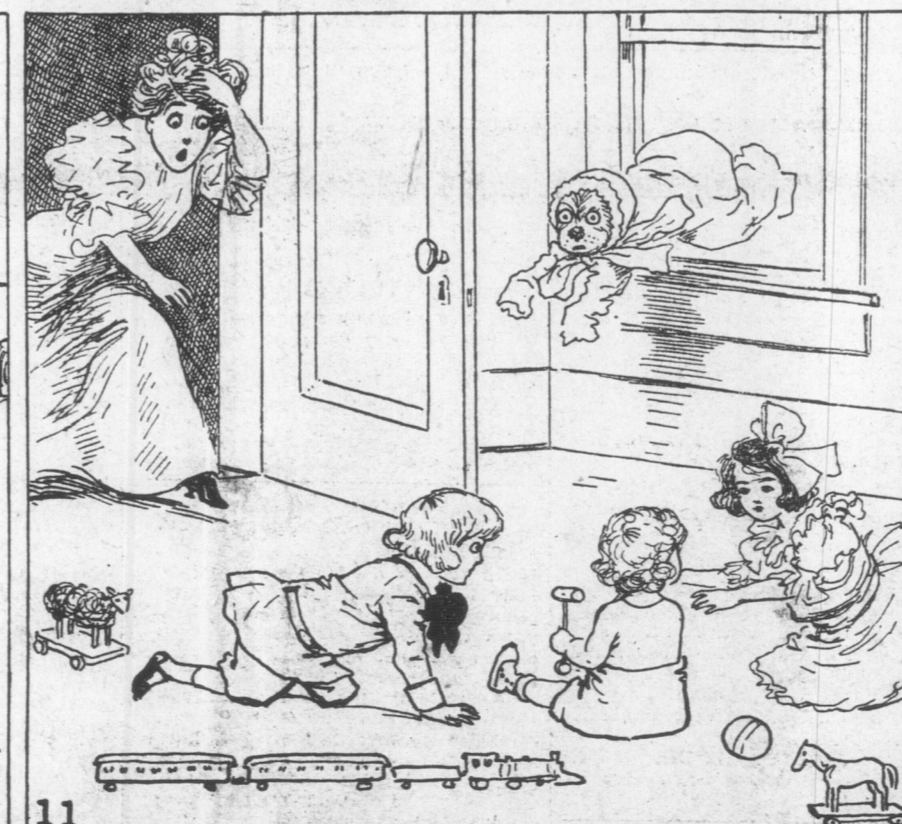
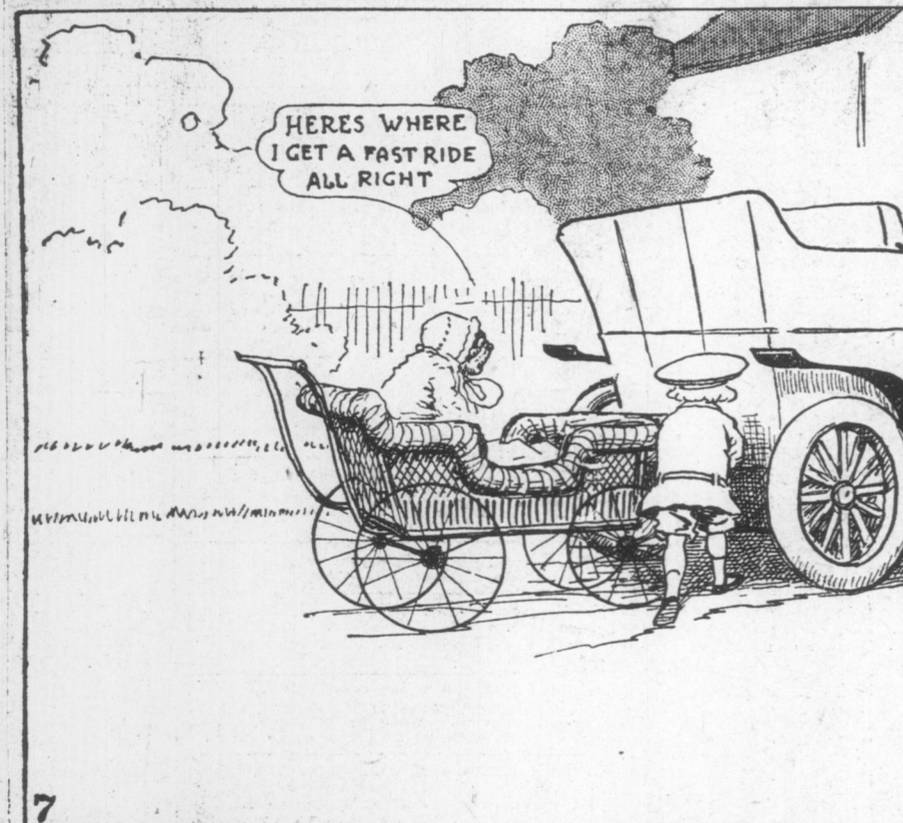
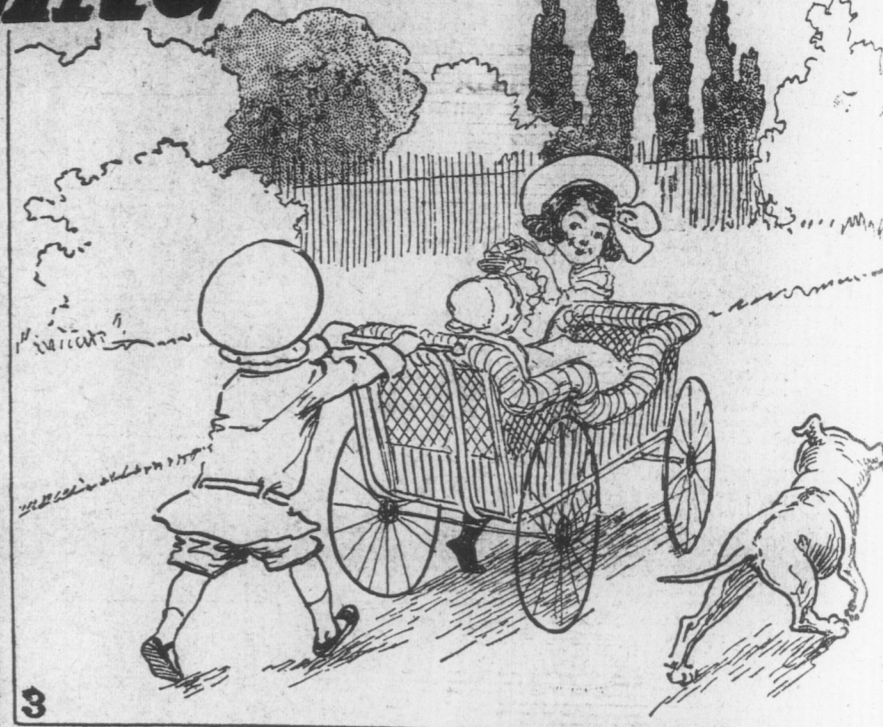




# TIGE GOES AUTOMOBILING HE PLAYS NURSE



\$1.00 PER COPY CANADA

Vol. 36.

## SIGNS OF

## Progress Along Vim--Bus M

Only last week the Vancouver News charting because it will soon be here. It is not realized that a five-cent expenditure of a paper have secured a happy her hopes a month. Fortunately the hundred citizens here for the be able to give the nation, and, maybe, a spruce that unique tree that one sort of blossoms, producing three. The woodbine and roses in less fortunate cities are looking for spring summer, and a stop Vancouver and New are beginning to sit. During the past estate operators land have been in the situation. Though as yet, been reported, that people from the have been among the

Heaviest Recent in Victoria acreage. priced C. T. Dunbar, J. H. Dickson, F. J. White, Panotiere, of Vancouver Hart, of the Royal C. Timber limits are such attention. The owners are complaining pelled to come to British Columbia to complete the lumber to complete the charters offered. An tion of a Sutton mill a resumption of operati Ross-McLaren mill minister, by the Least case, are merely the large contingent of V. bermen who will seek the near future. The local real estate quiet this week owing tion, but the building brisk. D. H. Bale has erect a modern two st Mrs. A. R. Milne on and Dr. Gibbs' house road is rapidly nearing Dominion Express Co. into its new premises

## NEW ADDITION THE C. P.

## MONTEAGLE ARRIVES HERE

## Ship Made Run Across Yokohama in Days

The former Elder-D. Monteaigle, which has for many years in the which about three or was purchased by the for use in the trans-Pa the outer wharf from a. m. on Saturday. just made the trip across in the Orient picked tons of freight and a large sengers for her inaugural Pacific. A number of the pa Victoria, but the local consisting of 100 tons. Vancouver, from where back on one of the steamers. They were distinguished passengers. They included Mr. S. the president of the who, as previously an the globe; Col. Barrett Le Marquis de Algren Letrim, the Comtesse others. She carried a saloon list, 13 European Asiatic passengers. There is nothing ren Monteaigle. She is m than a passenger stea is an important addi Pacific fleet, having a 6,500 tons and a net to passenger accommoda steamer is limited, but be increased before th her present service. additions were made, still more improve