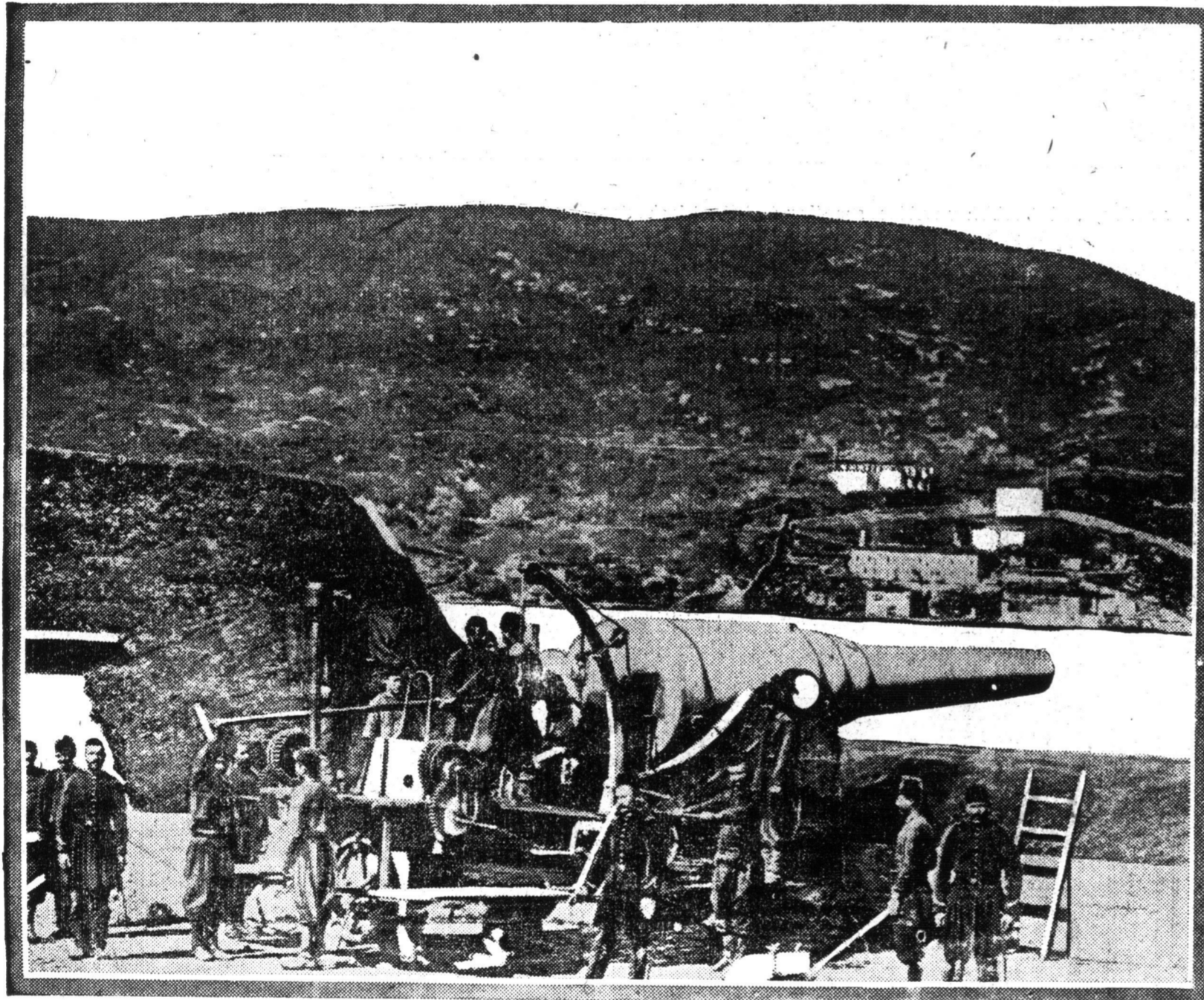
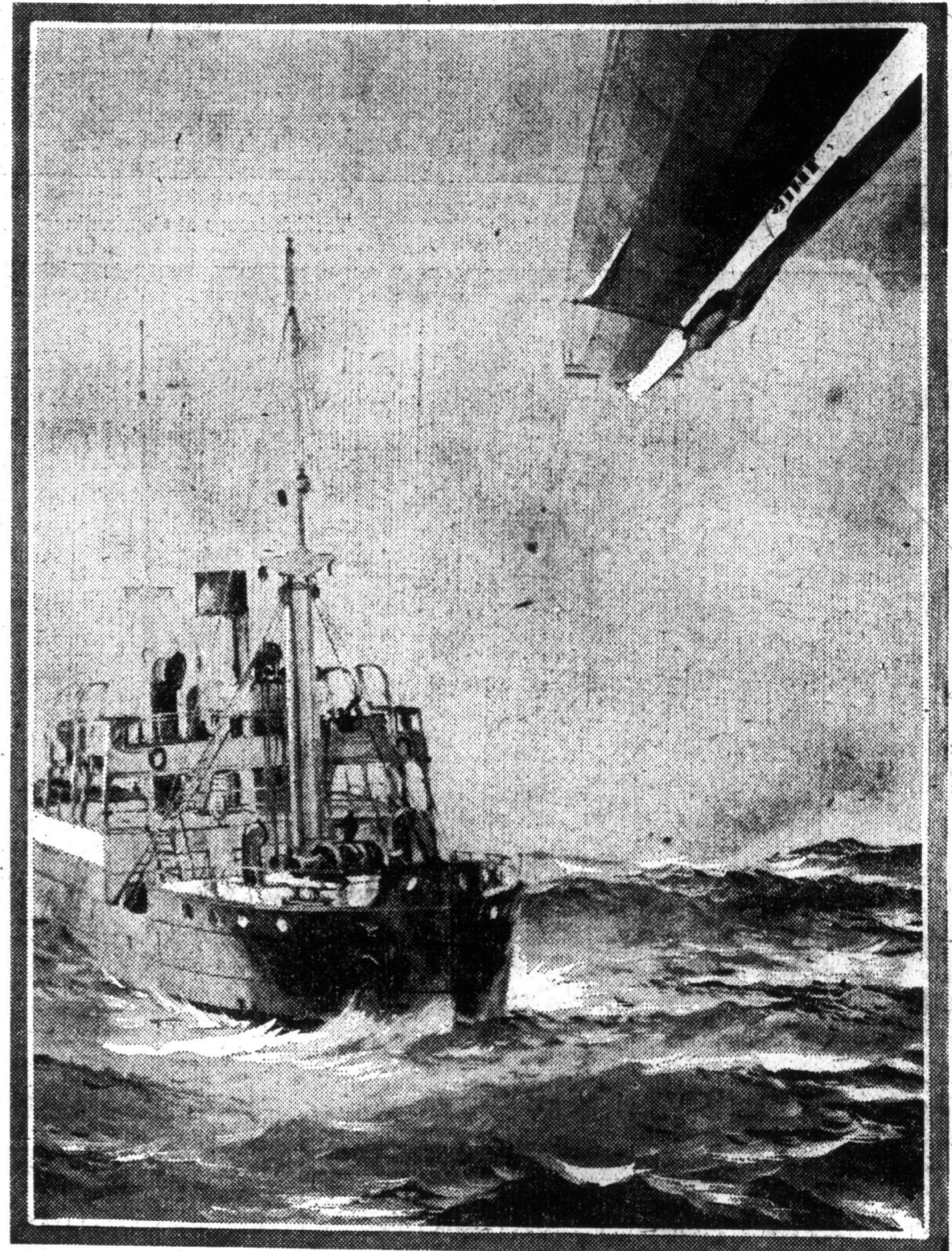


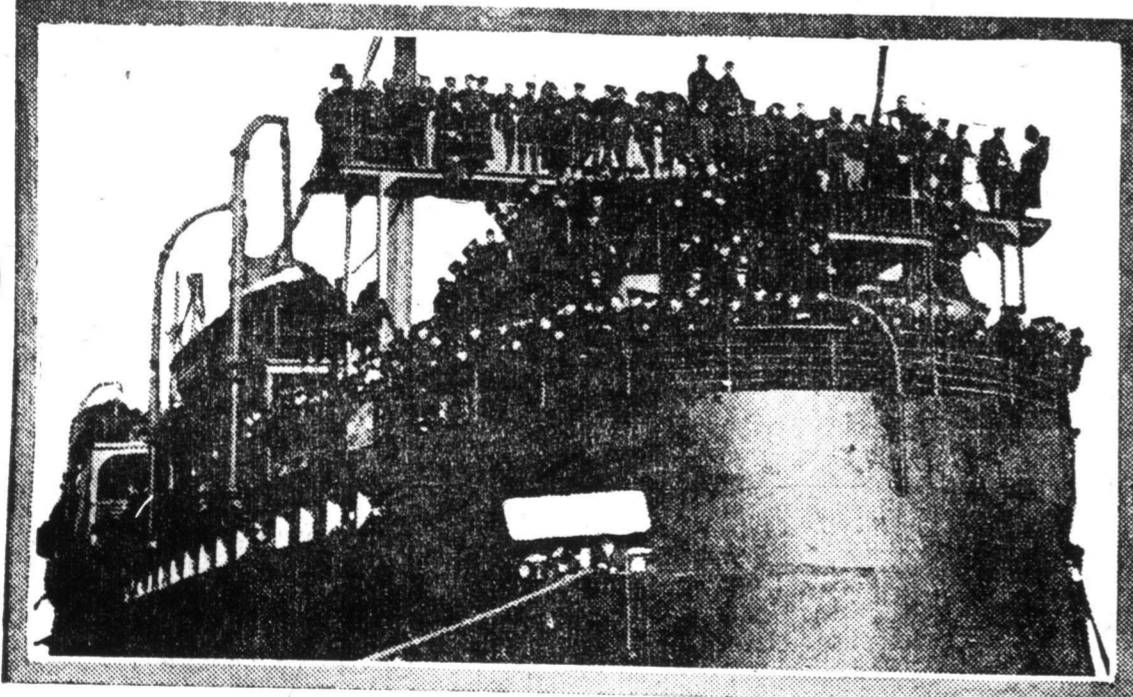
This is one of the 14-inch guns that will be mounted aboard the latest United States superdreadnought Pennsylvania. It will give very good idea of the size of the 16-inch guns on the six new British battle cruisers which the admiralty announces will be completed this year. This gun will hurl a 1,400 pound projectile 22,500 yards, while the new British guns will fire a shell weighing over one ton a considerably greater distance altho the exact power has not been disclosed.



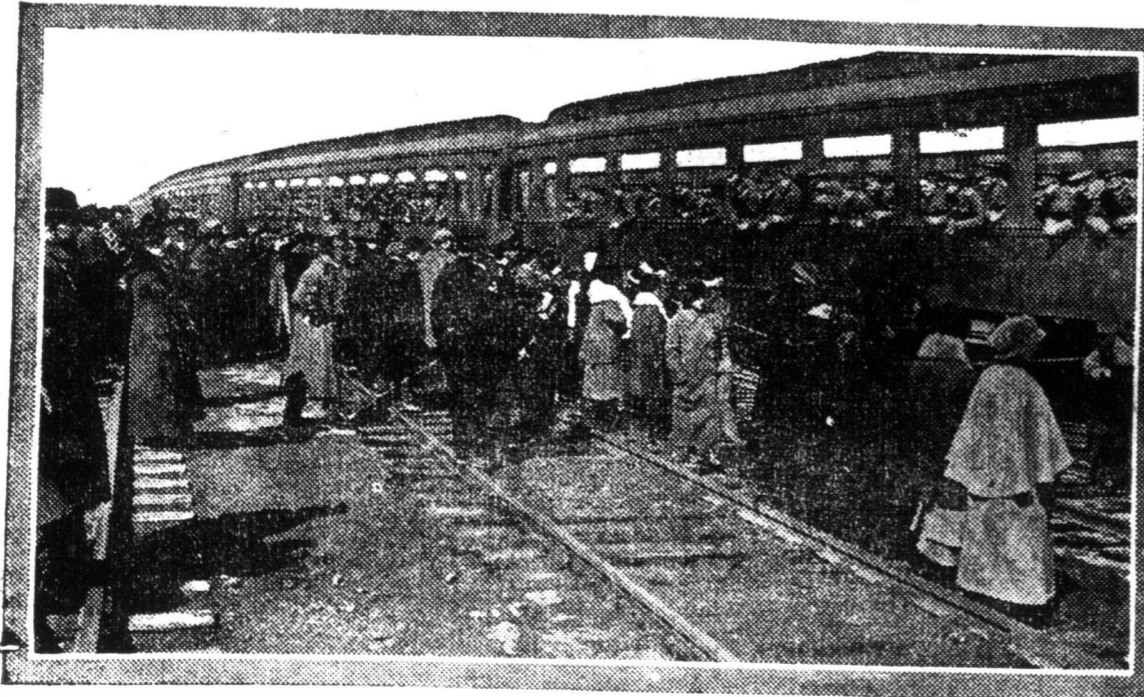
Interior of famous Madgar Kale Turkish forts in the Dardanelles which have been badly battered by the allied fleet.



There has been much boasting about the possibility of maintaining a blockade of England with Zeppelins. Here is our artist's conception of a merchant vessel being overtaken and held up by one of the giant gas bags.



During the past three weeks, there has been a steady stream of troops across Canada when the different units of the second expeditionary Force have been leaving the different mobilization points thruout Canada to embark at Halifax for Europe.



Canadian troops of the second contingent leaving Halifax on the Missanabic. No mention has been made of the departure of the various units.



Miss Percy Haswell trying her skill with the Ross Service Rifle at the Exhibition Camp. Miss Haswell is a good shot. The picture shows from left to right, Miss Campbell, Lieut. Fiske, Lieut. Lacey, Major Knox, Miss Haswell, and Miss Clarke.

Ryrie
SHUTTER
offices for rent
High - Radio
E. H. W
AS P

PROBS—

PR
COL
BRIT
AGA
DR

Fighting in
Bloodiest
Streets V
Enemy a
British O
ly Sacrifi
connoitri

LONDON. M
Fighting quality
der again were
battle of St. Eloi
parative unimp
situation much
ording to an a
tions in this dis
ish eye-witness
afternoon by U
Eloi is consider
legic importance
the junction of
from Ypres to
other from Ypres
"On the event
the eye-witness
heavy artillery
our trenches al
southwestern sec
deavored to rus
tempt succeeded
sector was conce
had been blow
be untimely. Th
lage, however, a
most determined
"Their fire wa
directed that the
sallants were ter
to their posts u
until they were
weight of numbe
"The German
ports to the tre
mound which th
mine. Following
penetrated into
were not allow
undisputed poss
Our first counte
2.30 a.m. on the
partly successfu
possession of St.
works and trench
"By another e
hours later, we
the enemy con
lage, and in
trenches which
ed. The mound
the hands of th
subjected to so
use could be ma
Storme
"The fighting
usual in such c
(Continued on

GERMAN
AROUS

Russian C
Take Diplo
Red Cr

ANSWER

Moral Respo
ing Polish
Rest

PIETROGRAD
don. 7.47 p.m.—
tion issued to
"The general
Russian Red ros
sidered a repor
voy, Prince
German atrocit
Red Society has
the Red Cross
world and to
Cross committe
communicate a
view to diploma

"Polash
This Canada
lar of recent
engagement
Theatre this
sale of seats
the season for