

L. SIMPSON

Store Opens 8 a.m.

Closes at 5.30 p.m.

H. H. Fudger, Pres.

J. Wood, Manager.

PROBS-

L. SIMPSON

Everything Requisite for Your Home is at the Simpson Store From Chippendale to Clothes-pins

The Right Kind of Coats & Sweaters for Women



On Monday the department devoted to Women's Ready-to-Wear Clothes presents an excellent opportunity for the selection of a smart and serviceable Winter Coat. There is a great variety and nothing but new styles and materials of high quality are included. Space forbids description but these few items are of special interest:—

A German Beaver Cloth Coat, black or navy, semi-fitting, shawl collar. Price 18.50

A Vicuna Coat, black and navy, a new close-fitting style, long revers, beautifully tailored, and finest imported material 12.50

Suits of English serge. These are specially made for stout women; black or navy. Sizes 37 to 47 bust measure 18.50

A Suit of Imported Venetian. This has a rolling collar and slash pockets, and skirt has wide panel in front, and fastens at left and back; colors navy, brown and black 16.50

Woolen Garments for Women and Children

Cold weather comfort to the wearer in every piece. Extraordinary price reductions in some instances. (3rd Floor)

Women's "Pen-Angle" Sweater Coats, three-quarter length, beautifully made in fine knit wool, lapel neck, double-breasted, two pockets, white, grey or reseda green. Sizes 34 to 42 bust. Regular \$7 each. Monday, each 3.50

Little Boys' Sweater Coats, heavy knit wool; knee pants, sweater and cap; navy, brown or grey, trimmed with contrasting color; for ages 2, 3, 4, 5 years. Each 2.25

Little Boy's Sweater Suit, heavy knit wool, one-piece style, buttoned down side, colors all white and grey or cardinal, with contrasting trim. Sizes 2 to 5 years. A suit 1.25

Women's Motor Scarves, extra wide and long, heavy knit wool and silk mixed, white with blue, pink or helle, silk pattern, width 15 in., length 76 in. Regular price \$1.50. Each 1.00

Women's Sweater Waist Coats, V neck, no sleeves, double-breasted, white or grey, 32 to 42 bust. Each 1.25

Women's Black Cardigan Jackets, heavy knit wool. Sizes 32 to 44. No sleeves, each 1.25. With long sleeves, each 2.00

Women's and Misses' Bedroom Slippers, hand crocheted, heavy wool, with leather covered soles, ruching around top, all colors. Sizes 2 to 7. A pair 1.00

Warm Blankets and Fine Linens

Wool Blankets \$2.19 pair—White, unshrinkable, 60 x 80.

Double Bed Comforters \$1.29—Pure white filling, in medium and dark colors.

White Saxony Wool Blankets \$5.95 pair—8 lbs., 68 x 88.

White Flannelette 10c yard—32 inches wide. Regularly sold at 12½c.

English Flannelette 17c yard—Regularly 20c.

100 Pure Linen Table Cloths \$1.65 each—2 x 2½.

Don't forget that Monday is our Basement Sale Day. If you are economical, things will go out of our Basement into yours, and into your kitchen and pantry, too. Any aid to housekeeping purchased here on Monday represents the highest value obtainable. Phone direct to all Departments.

HARDWARE

Oak Heaters, with heavy cast fire pot and trimmings, swing top, ash pan, first length of pipe. 4 sizes. No. 111, Monday, \$5.00; No. 113, Monday, \$6.50; No. 115, Monday, \$7.50; No. 117, Monday, \$10.00.
Buck Saws, Happy Medium. Regular 50c, Monday, .39
Arctic Snow or Coal Shovel, long handle. Regular 25c, Monday, .15
Storm Door Thumb Latches, Monday, .15
Chopping Axes, best Canadian make, Monday, .55
Carpenter's Adjustable Braces, Peck's patent, nickel plated, 12-inch sweep. Regular \$5.00, Monday, .39
Furnace Shovels, D handle, steel scoop. Reg. 40c, Monday, .33
Ash Sifters, galvanized. Regular 25c, Monday, .149
Rim Locks, with porcelain knobs. Regular 25c, Monday, .19
Claw Hatthets, steel blades, Monday, .50
Furnace Shovels, steel scoop, long handle. Regular 45c, Monday, .36
Butcher's Steels, 8½-inch blade, black handle with ring. Monday, .49
Two-Piece Carving Sets, Sheffield steel. Regular 50c, Monday, .39
Kitchen Butcher Knives, 6-inch curved blade, French make. Monday, .35

TINWARE

Household Scales, tin scoop, weighs up to 24 lbs. by ounces, Government tested and stamped. \$3.00 value, Monday, .95
Griswold Food Choppers, with unbreakable self sharpening knives, large size with 4 extra cutters. Regular \$1.50, Monday, .98
Galvanized Garbage Cans, with slip over cover and ball handle, three sizes, Monday, 50c, 70c and \$1.00.
Galvanized Boilers, sizes 8 and 9, with cover. Regular \$1.00, Monday, .66
Tin Boilers, flat copper bottom, sizes 8 and 9, with cover. Regular \$1.35, Monday, .89
Galvanized Tubs, with wringer attachments. Monday, 50c, 60c and 70c.
Gold Band Coal Hods, regular 36c, Monday, .19
Daisy Tea Kettles, Monday, .11
The Trenton Vacuum Washer, loose or solid bottom, square or round. Regular 25c and 35c, Monday, .17
Drip Pans, black Russian iron, 14 x 17. Regular 25c, Monday, .15
Oval Foot Baths, galvanized. Regular 40c, Monday, .33
Galvanized Pails, 8-quart, regular 20c, Monday, .15
Men's Dinner Pails, with flask, cup and tray, regular 50c, Monday, .15

Laundry and Woodenware

The Easy Wringer—A perfect wringer guaranteed for one year. Regular \$5.00, Monday, 3.98
Imperial Wringer—Fits any tub and guaranteed. Regular \$4.00, Monday, 2.98
The Trenton Vacuum Washer, does not tear the clothes, saves time. \$15.00, Monday, 9.95
Folding Wash Baskets, holds two tubs, any wringer can be attached, reversible drip board, galvanized fittings. Regular \$2.00, Monday, 1.49
Mrs. Peck's Irons, nickel plated set, Monday, .89
Polished set, Monday, .75
Heaters, regular 25c, Monday, .17
Globe Washboards, regular 25c, Monday, .19
Glass Washboards, best make, .32
Pony Washboards, regular 15c, Monday, .23
Clothes Lines, galvanized, 100 feet, reg. 30c, Monday, .23
Clothes Lines, galvanized, 50 feet, reg. 20c, Monday, .14
Clothes Pins, 6 doz. in package for15
Clothes Pin Baskets, 25c size, Monday, .19
Splint Clothes Baskets, 8 sizes, each Monday, .45
Skirt Boards, 4 feet, Monday, .19
Willow Clothes Baskets, \$1.00 size, Monday, .69
Ceiling Brooms, 1 foot, regular 35c, Monday, .25
2,000 Best House Brooms, 4 and 5-ft., best stock. Regular 45c and 50c, Monday, any broom for33

New Waists

Smart Silk Waist, in rich messaline, made in the simple kimono style, with set-in sleeve, effectively trimmed, flop frill, black, navy and green 5.00

A Soft Silk Waist, veiled with silk chiffon, in smart kimono effect, short sleeve, made in surplice style, combination of black and navy, with Paddy, American Beauty and all black. Special 5.00

New Tartan Plaid Silk Waist, plain tailored design, full length sleeve, close fitting, a 4.75



Trimmed White Beavers

We have just forty showy white beavers, trimmed with rich flowers and ribbons. The "white beaver" is the hat of the month, and these shapes are all exceedingly good styles. Pay the millinery salon an early visit on Monday, and make sure of securing one of these fascinating hats at the price, \$7.85 they are bargains

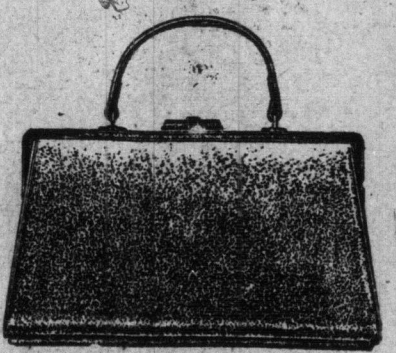
A Graniteware Sale

65c Graniteware for 23c
2,000 pieces, grey Graniteware Rice Boilers, round double roast pans, and round steel double roast pans, also Daisy tea kettles, saucepans, preserving kettles, tea and coffeepots, regular up to 65c 23c each, Monday
No phone or mail orders.

SAMPLE BOOTS

400 pairs Women's High-grade American Sample Boots, representing all the newest styles in fall footwear, tan calf, patent cut, gunmetal, velour and vicid kid leathers, New York, Cuban, military and low matron heels, button, Blucher and lace styles; boots that were made to sell from \$3.00 to \$5.00. Sizes 3, 3½ and 4 1.99 only, Monday

240 pairs Men's Boots, Blucher style, made of selected velour calf and box kip leather; some have short vamp and wing tip, solid leather, McKay sewn, and standard screw soles. Sizes 6 to 11. Regular value \$2.50 and \$3.00. Monday 1.99



A Sale of Hand Bags

Women's Hand Bags, black only, in all shapes and sizes. Regular from 98c to \$1.75. Monday49
Children's Hand Bags, in seal grain, with gilt chains. Regular 50c. Monday19 (Main Floor)

The Right Kind of Winter Coats for Men

If you want a sturdy winter overcoat, proof against wind and cold, made of good material, cut in good style and tailored carefully from collar to hem, you should pay our Men's Clothing Department a visit. The stock offers excellent selection, at prices which will surprise you by their reasonableness.

Heavy Ulsters—English 12.50

tweed ulstering, double-breasted

Beaver Cloths, with Russian Marmot Collar, good cloth, good fur and interlined with cham-ois 20.00

Boys' Reefers, grey frieze and blue nap, wool lined. Regular \$4.50. Monday 2.79



Do you ever notice any of the following features of the houses you enter: the lighting fixtures; the china; the tea; the cleanliness? Do not forget that other people are probably observing these features of your house. If you don't feel quite comfortable about it, here's where we can help you to-morrow.

Gas and Electric Light Specials—(Fifth Floor)

2 and 3-Light Electroliers, new design in Flemish finish, complete with shades. 2-light, Monday, \$6.75; 3-light, Monday, \$7.50.
2-Light Electrolier, rich gilt finish, complete with shades. Regular \$4.00, Monday, 2.75
3-Light Electric Ceiling Fixture, 12-in. brushed brass pan with chain drops and suitable shades. Regular \$10.00, Monday, 6.95
Verandah Light, brass band, lamp socket and large white ball shade, complete. Regular \$1.25, Monday, .79
Electric Portable Lamp, black and brass stand with cord, plug and green dome shade, complete. Regular \$4.00, Monday, 2.50
2-Light Gas Fixture, rich gilt finish, complete with shades. Regular \$2.00, Monday, 1.39
Gas Hall Pendant, with inverted burner, chain tap and fringed shade, complete. Regular \$2.50, Monday, 2.29
Rational Inverted Light with burner, mantle and half frosted shade, complete. Regular 60c, Monday, .49
Lindsay or Weisbach Upright Light, complete with burner, mantle and white globe. Regular 75c, Monday, .59
"Weisbach" Upright or Inverted Gas Mantles. Monday, 2 for .25
"Simpson's Special" Upright Gas Mantles, Monday, 3 for .25
White Glass, or Half-frosted Inverted Globes, Monday, each10

Bargain Chinaware

1,000 pieces Limoges China, comprising Tea and Coffee Cups, Saucers; Tea, Breakfast, Soup and Dinner Plates. The pattern is a dainty rosebud band. Monday sale, less than half price10
Combination Dinner and Tea Service for 12 people, in best English "Bisto" ware. Regular \$16.50, Monday, 12.50
102-piece Dinner Set, in Genuine Carlsbad China, in rosebud chain border, heavily gold finished, Kermiss shape cups, Monday, \$1.00
Theodore Haviland Dinner Set, 102-pieces with heavy burnished gold edge line, handles in coin gold. Monday, special 42.00
Decorated Milk Jugs, all sizes to clear15
Cheese Stands, in nice fancy floral finish. Regular 75c, Monday, .39
Strong Toilet Ewers and Basins. Regular 75c, Monday, .49
100 Covered Vegetable Dishes, in assorted shapes and decorations. Regular to \$1.00, Monday, to clear at49
Oddments at 5c for a big clearance Jugs, Bakers, Plates, Mugs, Soup Dishes, Dinner and Soup Plates, etc. Reg. to 25c, special5

The Best Cleansers

Wide Awake Soap, best quality 6 cakes .25
Fels Naptha Soap, per bar5
Surprise, Sunlight and Taylor's Borax Soap 6 bars .25
Comfort and Eclipse Soap 6 bars .25
Heather Brand Soap 7 bars .25
Simpson's Big Bar Soap, per bar10
Santa Claus and Victor Soap 6 bars .25
Pearline, 1 lb. package11
Old Dutch Cleanser 3 tins .25
Sapolio, per cake8
Powdered Ammonia, large package25
Napha Powder, 1-lb. package 3 packages .25
Gold Dust Washing Powder, large package25
Lux Washing Powder 3 packages .25
Taylor's Soap Powder 2 packages .9
Royal Blue7
White Swan Life, per tin7
Canada White Laundry Starch, 1-lb. package7
Bon Ami, per cake12
Swift's Pride Cleanser 3 tins .25
5 LBS. CELONA TEA, \$1.10.
1,000 lbs. Pure Celona Tea, of uniform quality and fine flavor, black or mixed. Monday 5 lbs. 1.10

SANITARY ART WOOL

Rugs for Bedrooms

Blue, pink, grey and green, some with plain centres, which make such desirable background for attractive furniture and delicate walls; others with small all-over designs, with beautiful chintz effect borders, and there are those with mixed colors to withstand the hard wear, and tone with almost any surroundings. Sizes:

7.6 x 9 5.50 up to 12.25
9 x 10.6 7.75 up to 17.25
12 x 12 9.75 up to 24.75
14 x 14 12.75 up to 34.75
16 x 16 15.75 up to 44.75
18 x 18 18.75 up to 54.75

Dressing Gowns, grey, trimmed silk cord. Monday 10.00

Men's English Flannelette and Cotton Night Robes, heavy winter weight, turn-down collar. Sizes 15 to 19. Regular up to \$1. Monday59

Men's Underwear, heavy winter weight, natural wool, shirts and drawers, unshrinkable. Worth \$3.50 a suit. Monday, a garment 1.29

Heavy Sweater Coats, some with collars, others V shaped neck, with piped edges; a very strong and serviceable coat sweater for hard wear, in an assortment of colors. Regular \$2.50 and \$3.00. Monday 1.98

Men's Caps, in fine assorted tweeds, medium, light and dark colors, fur-lined ear bands. Monday29

Children's Wool Toques, in large assortment of colors. Monday29

Men's Soft Hats, rough finish, fine English make, colors bronze, brown, light or dark grey. Monday 1.50

Furniture Specials for Monday

Willow Chairs, in buff color, large size, made strong and durable. Monday 3.45

Willow Chairs, with large, wide arm, and deep seat, built for comfort. Monday 4.95

Reed Rocking Chairs, made of high-grade reed, with roll arms and roll seat, finished natural. Monday 2.49

Reed Rocking Chairs, made of the best of materials, and finished dark green. Monday 5.90

A Solid Mahogany Arm Chair, "Chippendale" style, faultlessly built and beautifully finished, of English manufacture. Selling price 120.00

Bargains in Furnishings and Curtains

English Sateen, for comforter coverings. Regular 15c. Monday, yard11

Cretonne. Reg. 20c. Monday, yd.13

Chintz. Reg. 40c per yd. Monday19

Dutch Curtains. Regularly \$6.00 pair. Monday 2.39

Dutch Table Covers. Half-price

Window Shades. Regular 55c. Monday33

Silverware Surprises

Silver-plated Fern Pots, 5-inch size, with linings. Regular \$1.50. Monday98

Toast Racks and Butter Dishes, best plated on nickel (dishes have glass bases). Regular \$1.50. Monday98

Baby Spoons, "Rogers." Regular 50c. Monday25

The SIMPSON Company Limited