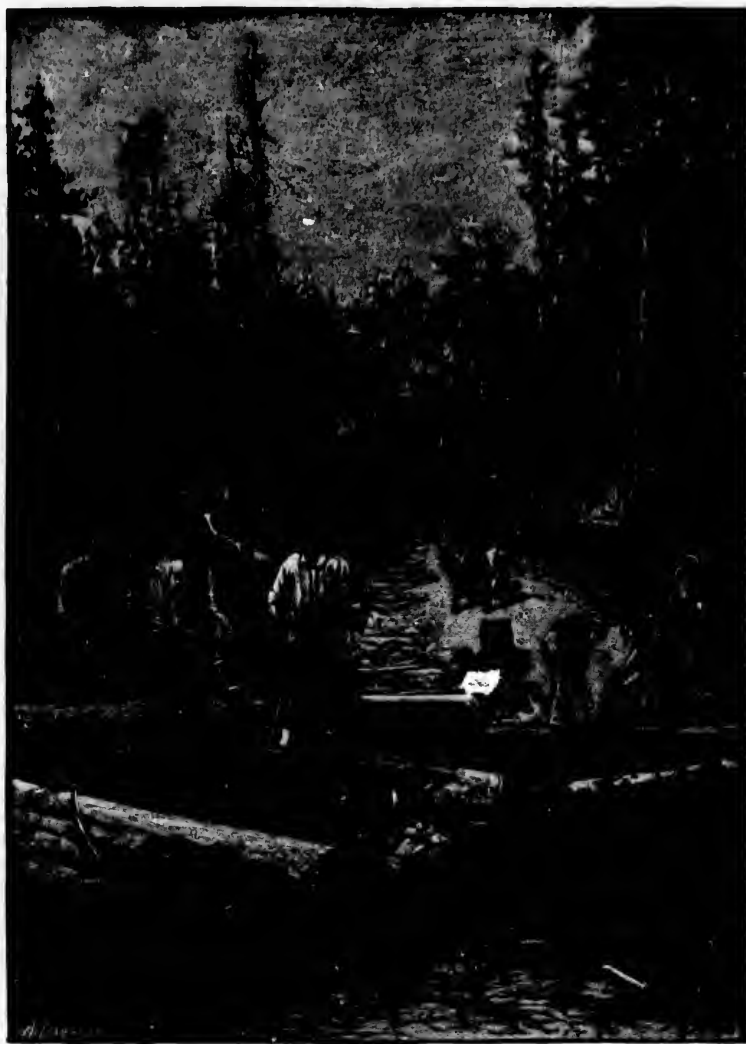


Eastern
forests.
own the
he spars
a told of
rth, and
uld have
bilee had
etting it

ver, form
ss of the
for build-
to supply
securing
the trees,
wing the
ntling.
of the logs
ctors, who
et for logs
the mills
nce to en-
ty. A con-
x or eight
ke of oxen.
lace chosen
crew, who
llars a day,
000 feet of
d out of the
windlasses,
rt railways,
of river or
p into rafts,
boats to the
the logs is
t; but some-
et are pre-

in the boom
n grappling-
d drawn up
ere cross-cut,
aws, planing
it into every
s are utilized
ckets for that
in Louisiana
fuse, beyond
n make away
solidly at the
h wharves as

into the com-
nly the pro-
e of those at
mbia, which
essels a year,



LOGGING ON PUGET SOUND.

their cargoes aggregating over thirty millions of feet. Since the great depression in the lumber business a few years ago a powerful combination has closed many mills by subsidies. Of the largest, however, Port Discovery, Utsaladdy, Port Madison, Port Blakeley, Seabee, and Tacoma are all in operation. At Port Ludlow we found nearly ready for work a mill larger than any of the foregoing, or,

for that matter, of any on the Pacific coast, since by the time this article meets the reader's eye it will be able to turn out 250,000 feet of lumber daily.

All these mills are on tide-water, and own fleets of steam and sail vessels for the carriage of their surplus product, while also supplying the cargoes of vessels sent hither. The largest of them will employ 150 or more men in and about the mill, and