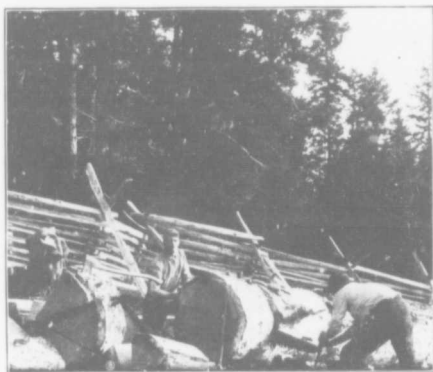


Some prices of **farm produce**: Apples average 75 cents a box of 40 lbs., eggs 15 cents to 50 cents per doz., butter 20 cents to 35 cents per lb., lambs (live) \$3.50 each, fowls (live) \$6 per doz., broilers (live) \$4 per doz., ducks (live) \$6 per doz., and pigs 7 cents per lb. live weight.

**Freight** to Victoria and Nanaimo \$2.50 per ton, 25 cents for single packages and lambs (1 cent =  $\frac{1}{2}$  penny, \$1 = 4/2).

Prices of **supplies**: Flour \$5 a bbl. of 200 lbs., sugar 6 cents per lb., wheat  $1\frac{1}{2}$  cents per lb., potatoes \$1 per 100 lbs., meats 10 to 12 cents per lb.



CUTTING FIREWOOD.

**The price of land** varies with quality, situation, distance from a wharf, etc. Ranches of 100 to 160 acres are worth \$1,000 to \$5,000 (£200 to £1,000) according to amount of improvements, and a man should be able to make a living at once on a \$5,000 farm.

**Labourers** and **house servants** are scarce and expensive, but during winter Japs can be had at 75 cents a day, boarding themselves.

The felling of the timber on **new land** costs \$6 to \$8 per acre. This is done in winter and the trees being left to dry