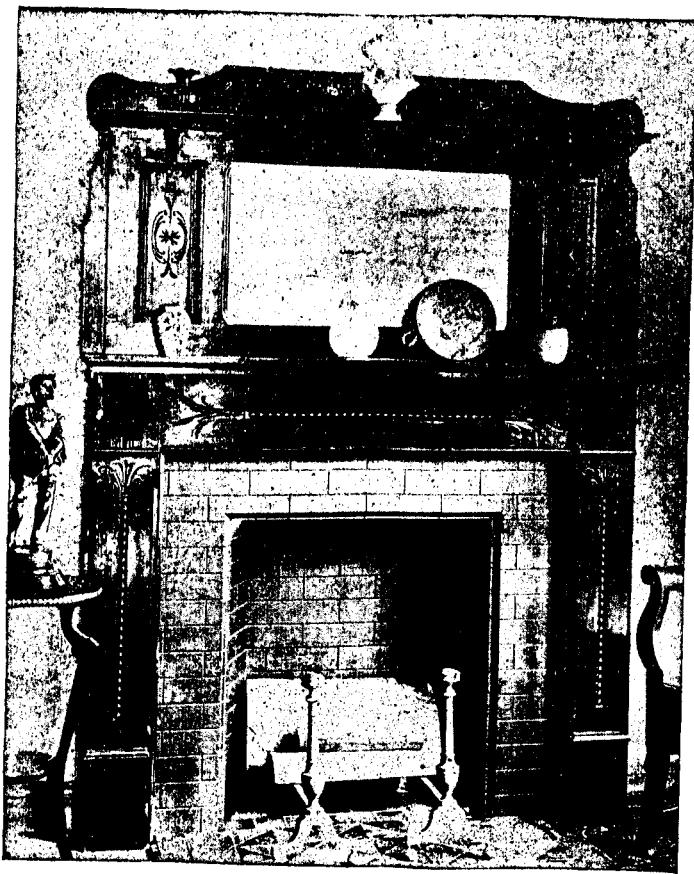


Wood Mantels. <



No .32

Height, 76 inches. Width, 54 and 60 inches.
Opening for Tiles, 36 x 42 inches and 36 x 36 inches.
German Bevel or Plain British Mirror 16 x 28 inches.
With British Plate Mirror, \$1.50 extra.
Hardwood finished in imitation Cherry, Mahogany and
Antique.

\$10.00

J. & J. D. HOWE, Furniture Manufacturers,
St. John, N. B. :

Illustrated Catalogue and Price List of Wood Mantels in Oak, Cherry and Hardwood
furnished on application.