

ing nearly to or quite to the 3rd coxæ. Cornicles rather short, black to deep brown; imbricated, cylindrical, or slightly expanding at the base, a few constricted at the apex and base. Cauda black or brown, blunt, with two pairs of lateral hairs. Legs black, except the base of the femora, which are yellowish. Base of wings yellowish; stigma and veins greyish brown to brown.

*Length*—1.8 to 2 mm.

*Apterous viviparous female.*

Deep greyish green to almost black, with much mealy covering, and, when denuded of this, the insect is somewhat shiny. Antennæ

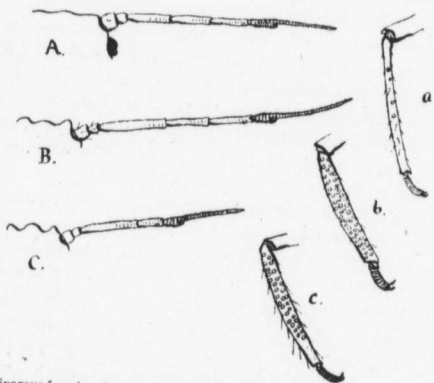


Fig. 8.—Oviparous females of Apple Aphides. A, *Aphis pomi*; a, hind tibia. B, *A. koehlii*; b, hind tibia. C, *Siphocoryne avenæ*; c, hind tibia.

shorter than the body, base paler than the rest, composed in all the specimens I have seen of 5 segments only; the 3rd very long; the 4th less than half its length; the 5th with a short flagellum. Eyes deep brown to black. Proboscis greenish, apical half almost black, reaching to the second pair of legs. Venter deep greenish. Cauda black to brown. Cornicles short, black; in some the base is reddish yellow. Legs black.

*Length*—2 mm.

*Nymph*.—Two forms occur, one pale to deep green, mealy,