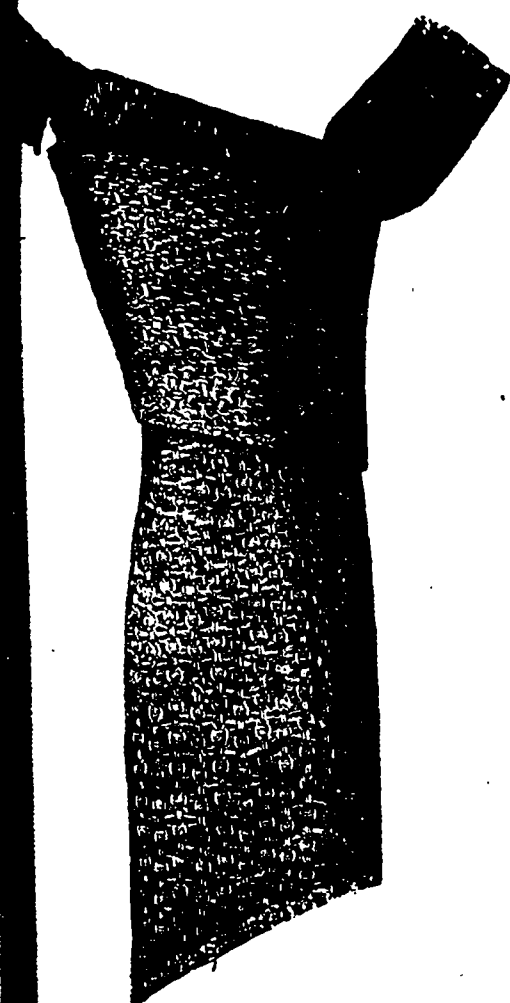




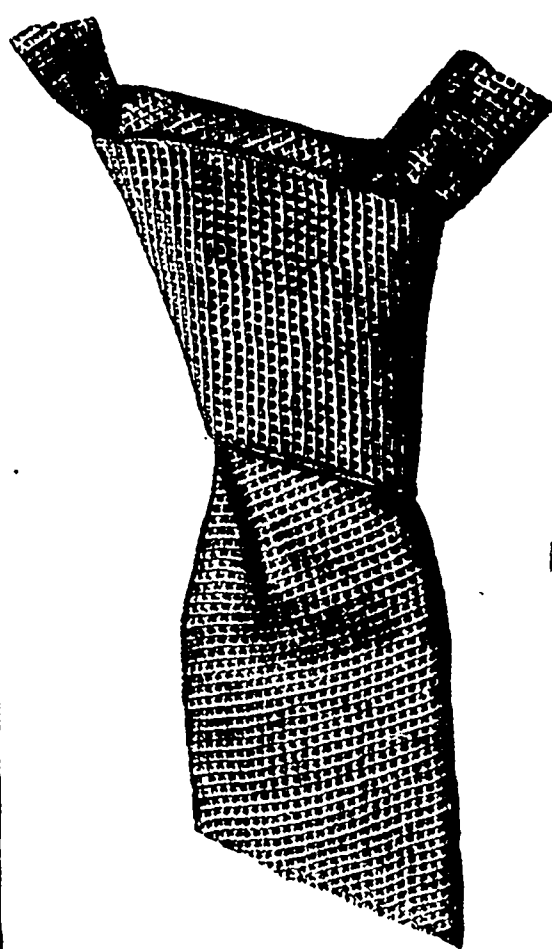
SPECIALTIES FOR SPRING, 1892.



THE "TOUR-ANGLAIS" SILK SCARF.



THE "CROCHET" SILK SCARF.



NOVEL FABRICS
BEYOND IMITATION.

WOVEN ON THE LOOMS
OF

JOHN ERSKINE & CO.

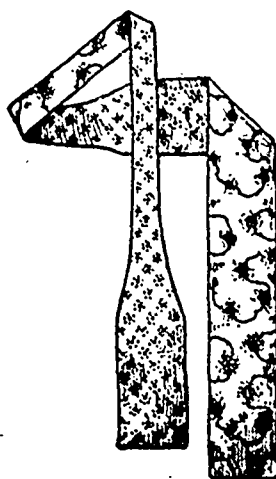
476 & 478 BROOME ST.,

NEW YORK.

MANUFACTURERS OF

"ELBISREVER" SCARFS.

A
NOVELTY
IN
NECKWEAR.



A
Four-in-Hand,
Seamless in
tie portion,
woven in one
piece.
REVERSIBLE.

The three styles illustrated above are of open fabric, soft and effective in the tying. We offer them in an extensive line of delicate colorings. Write for prices and color list.

THE SUMMER CROCHET (pattern 98) is a cotton four-in-hand scarf in solid white, also in mixtures. Send for sample and color card from which to make up order.

We invite the attention of the Gents' Furnishing Trade to our Double-Faced, Reversible Four-in-Hand Scarf, in which we are offering attractive lines.

This Scarf has been received by the trade as an article of pronounced merit. It has commanded attention and a ready sale wherever placed before the public thus far.

It is Doubled-faced and, therefore, is reversible. In many of the styles one face is a different effect from the other, thus affording TWO DISTINCTLY DIFFERENT Ties in ONE. The scarf is woven in one piece, presenting no seams in the Tie portion ever.

We are continually adding to our styles and patterns. The prices for these goods range from \$2.25 per dozen upward.

We solicit an early call from your representative when in Toronto, purchasing new stock, to whom we shall be pleased to have an opportunity to show the lines we are offering.

By placing your order with me, you are dealing direct with the manufacturer and saving the middleman's profit.

J. T. B. LEE, CANADIAN AGENT.

60 YONGE ST., TORONTO.

try
se
need
e
s
e
r
ic
s.
is
id
e-
a
re
id
ol
he
to
ds

=

n
10-
but
oo.
isi
of
lox

for
Co.
ton
of