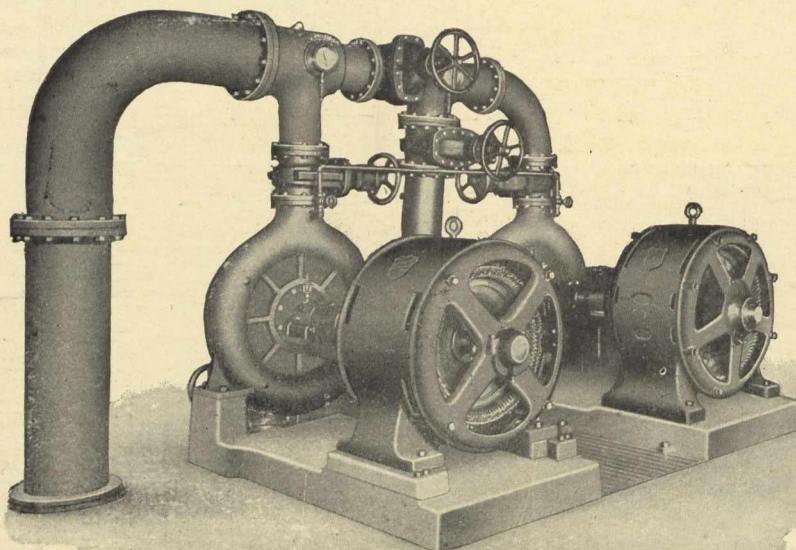


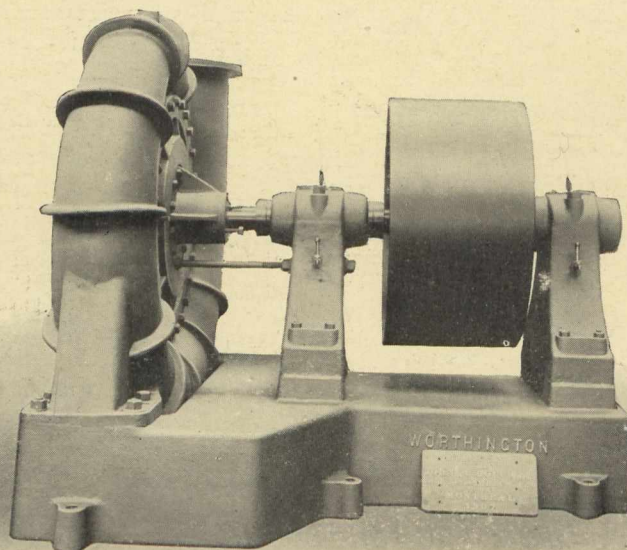
CENTRIFUGAL PUMPS

FOR WATER WORKS PURPOSES

The turbine pump, while operating at constant speed, will maintain a practically constant pressure and deliver a variable amount of water from nothing up to the full capacity of the pump. As the pressure is determined by the speed, and there is no positive flow or delivery, the capacity of the pump depends upon the difference of the pressure maintained at the circumference of the impellers, due to their velocity, and the pressure at the outlet.



This makes these pumps ideal for pumping directly into water mains. On this page is shown a combination for either domestic or fire purposes. It consists of two single stage 8-inch pumps, each driven by a 100 H.P. induction motor, and so arranged that they may be operated in series for domestic or in multiple for fire purposes. Each pump works against 160 lbs. pressure, and is capable of delivering 1,500,000 gallons in 24 hours.



FOR MANUFACTURING PURPOSES

We also design and build centrifugal pumps specially to suit a great variety of manufacturing purposes. The illustration shows a 20-inch volute centrifugal pump, capacity 11,000 gallons per minute, built for handling pulp "stuff" at the Laurentide Paper Co., Grand Mere, Que.

**THE JOHN McDOUGALL
CALEDONIAN IRON WORKS CO.**
LIMITED

Works: Montreal.

Sales Offices: Montreal, Toronto, Cobalt, Winnipeg, Calgary, Vancouver