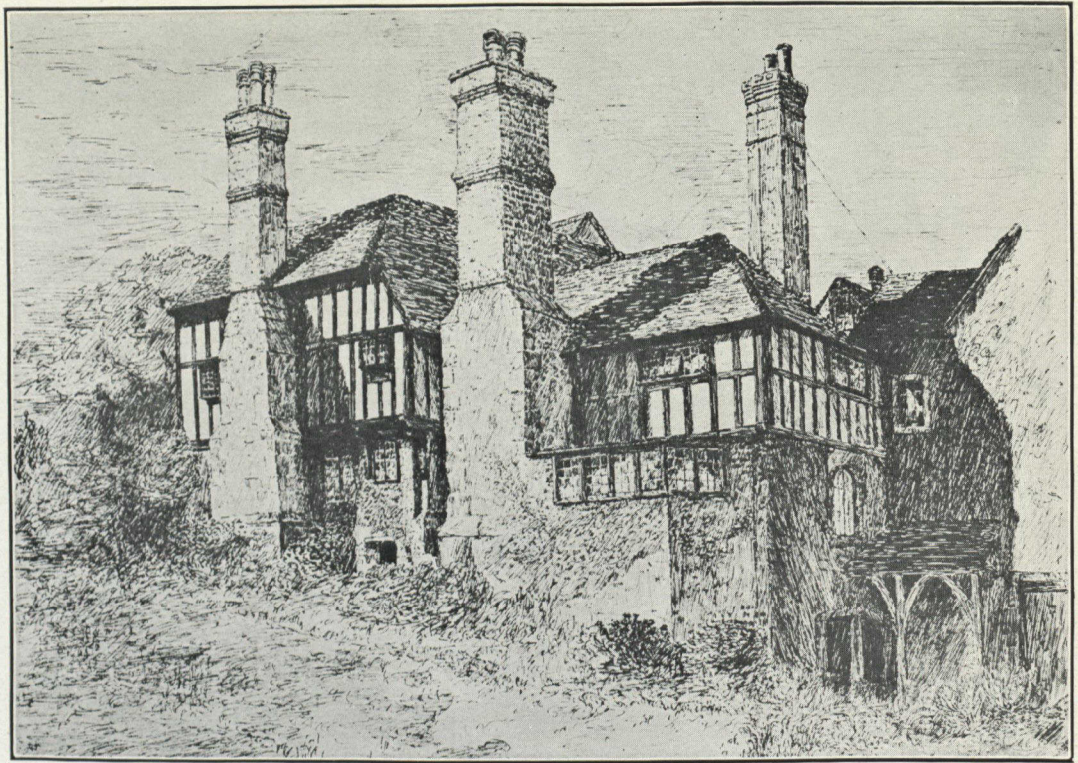


*THE GOLD STRIPE*



FRISTON PLACE, EASTBOURNE.

Copyright, A. & E. Cherry.

From the Drawing by E. J. Cherry, 29th Battalion.



"THE LAMB INN, EASTBOURNE."

Copyright, A. & E. Cherry.

From the Drawing by E. J. Cherry, 29th Battalion.