

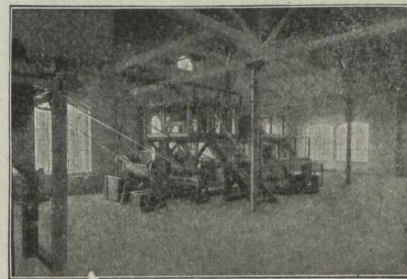
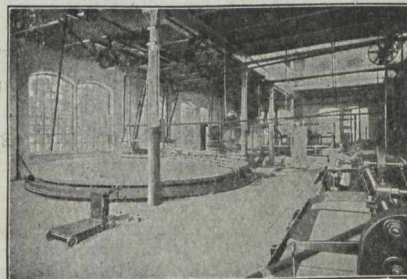
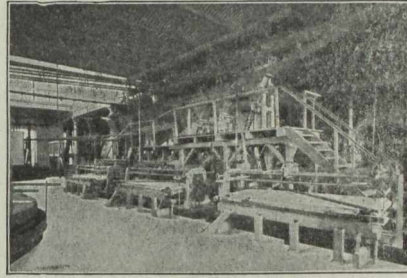
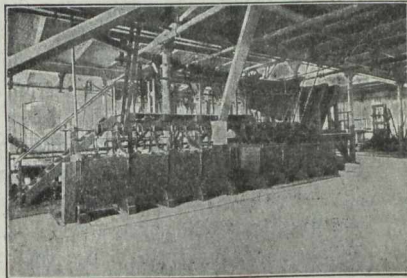
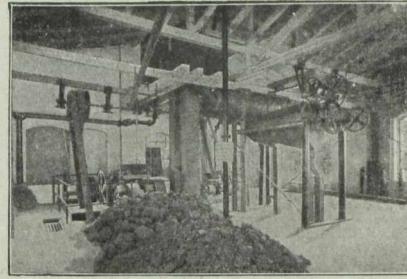
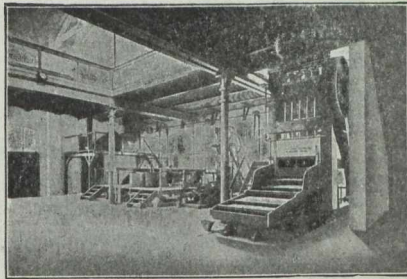
Works do all this experimental work for any mining company at a very moderate and nominal fee. The reports at the same time are very exhaustive and to the mining public of great assistance in the selection of the right plant for the most profitable treatment of their particular ore.

Such reports save the investor a great deal of time and money and show him clearly what can be done with his ore and whether it will be possible to work his property at a profit.

As a rule it is advisable to first submit to the Krupp Works a 10 to 15 lbs. sample for preliminary inspection. If the results with this sample are encouraging, the works will ask to submit 3-5 tons of average crude ore, unbroken for a thorough and exhaustive test.

**PETROLEUM.**

At the present time the principal oil fields in Canada are situated in the peninsula of Southwestern Ontario, between Lake Huron and Lake Erie. The first oil was found in Lambton County in 1862, and active production has been continued ever since. Until 1907 the Lambton County fields, in which there have been about 11,000 producing wells, were by far the largest producers; since then several new districts have been opened up, the most prominent ones being the Tilbury district in Kent County and the Onondaga district in Brant County. The oil districts are all situated within an area underlain by Devonian strata, usually on an anticlinal axis, and the petroleum is largely obtain-



**Krupp Ore Testing Plant at Magdeburg**

The reports are forwarded, and, if desired, with samples of the concentrates, etc., without any restriction and the customer is at liberty to buy the machinery wherever he pleases. Naturally the Krupp Works desire a chance of competing with the other makers of ore dressing and metallurgical machinery once it is decided to erect a plant, but no obligation exists in this direction.

Thus it will be seen that Krupp's Ore Testing Plant offers many advantages to the mining public, which should be made use of, whenever the opportunity arises.

Messrs. Jas. W. Pyke & Co., Limited, 232 St. James Street, Montreal, are the Canadian representatives for the Krupp Engineering Works and will be glad to give any further information to interested parties who may wish to send samples of ore over to the Krupp Testing Station for examination.

ed from horizons in the Onondaga formation at depths varying in the different localities. When the wells are first drilled, the natural pressure is usually sufficient to force the crude oil to the surface, sometimes producing what are known as gushers. After the flowing period, the oil has to be pumped. While some of the smaller districts became exhausted in a few years, many of the pools being only a few hundred feet wide and perhaps a quarter of a mile long, others have continued to furnish oil for a long period.

Four refining companies are operating in Canada distilling about 10 million gallons of Canadian crude oil per year, but the greater part being distilled at these refineries is still being imported from the United States. The total production for Canada for the year 1912 was 243,336 barrels, valued at \$345,050.